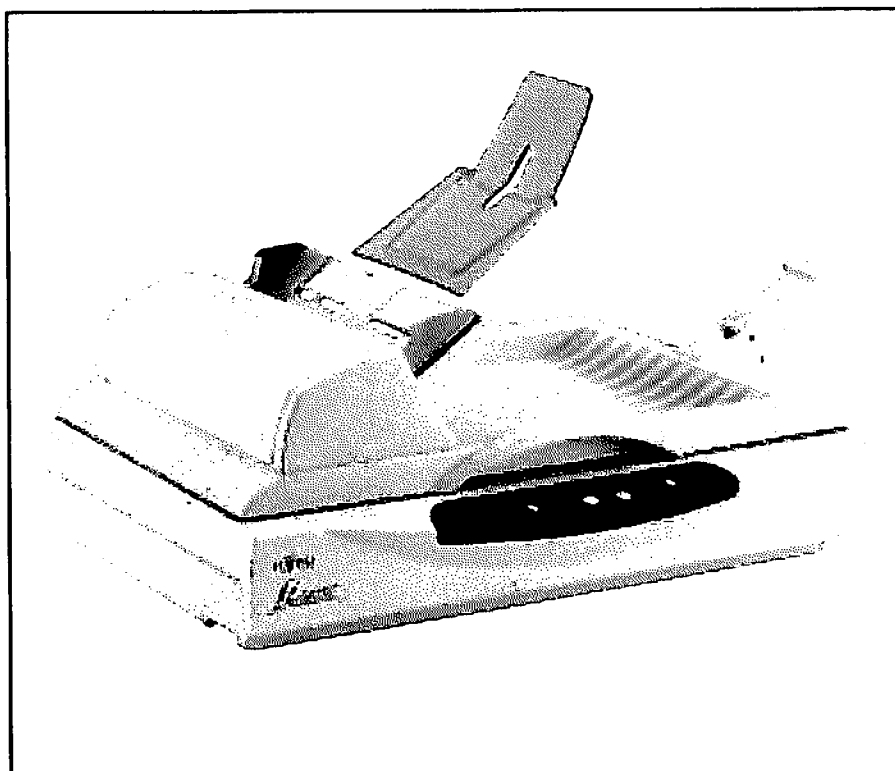
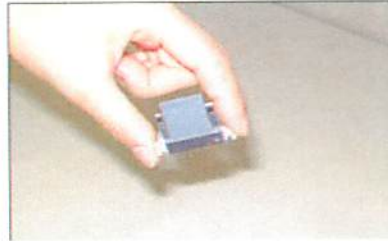


**fi-5015C CONSUMABLE REPLACEMENT
AND CLEANING INSTRUCTIONS**

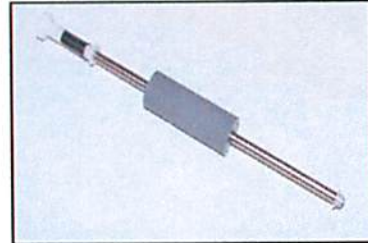


Kit Contents

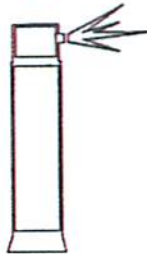
Pad
Assembly
Qty 2



Pick Roller Assembly
Qty 1



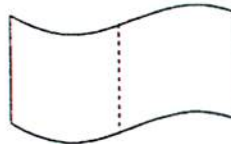
F1 Cleaner
Isopropyl Alcohol
Qty 1



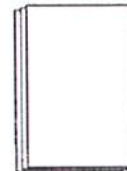
Cotton
Swabs
Qty 1 100/pack



Lint Free
Cleaning Cloths
Qty 2 20/pack



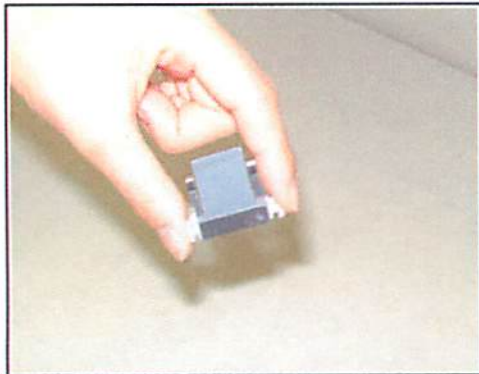
Cleaning Paper
Qty 1 10/pack



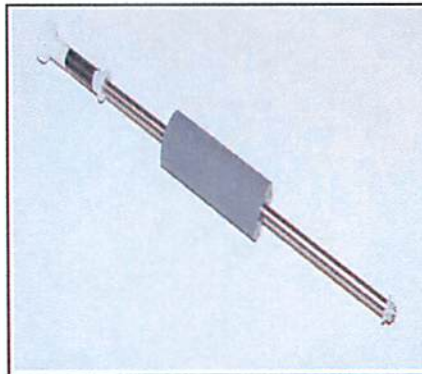
CONSUMABLES LIST

Description	Qty	Life	Fujitsu P/N
Pad Assembly	2	20,000 Pages	PA03209-0550
Pick Roller Assembly	1	100,000 Pages	PA03209-0551

Pad Assembly



Pick Roller Assembly

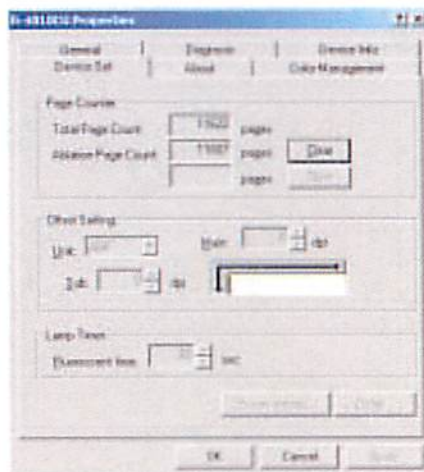
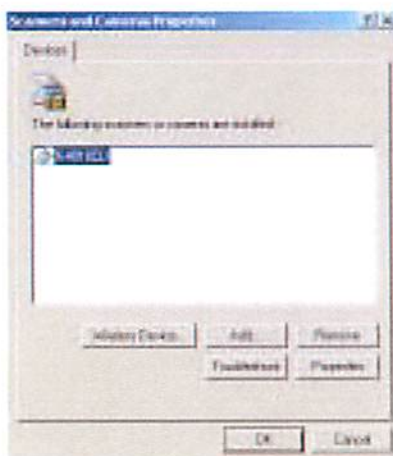


Note:

Replacement Cycles are estimated guidelines established by testing with A4/Letter sized woodfree and wood based 17 lb paper. NCR or Carbonless paper has chemical composition which damages the Pad. Cleaning of the consumables and feed rollers will be required more frequently to avoid feed problems. Consumable life will be reduced if NCR or Carbonless paper is scanned.

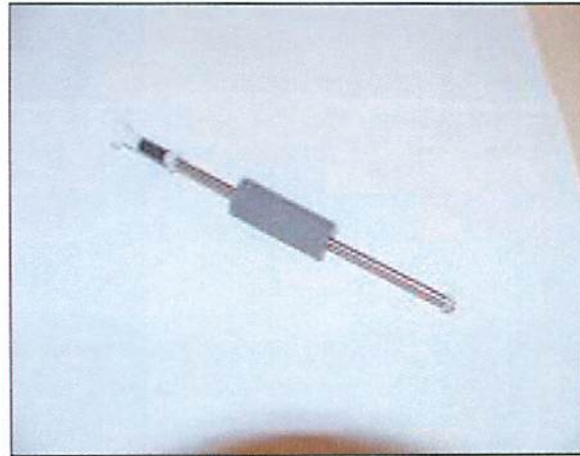
CONSUMABLES PAGE COUNT

Double click the "Scanners and Cameras" Icon on the Control panel of the Host Computers Windows Operating System. Double click the "fi-5015C" in the "Scanners and Cameras Properties" Display to display the Properties screen. Select the "Device Set" Tab.



CONSUMABLES PAGE COUNT (CONTINUED)

- Your computer will display the Properties for the fi-5015CU scanner. You can reset the Pad counter to 0 each time it is changed to determine when it should be changed next.



Pick Roller Assembly

- Your computer will display the Properties for the fi-5015CU scanner. You can reset the Pick Roller counter to 0 each time it is changed to determine when it should be changed next.

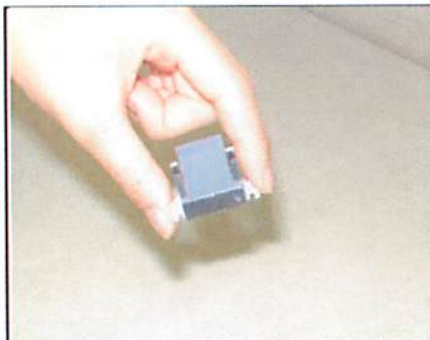
REPLACING THE PAD ASSEMBLY

A defective or improperly installed Pad Assembly can cause misspicks, skew, or double fed documents. To replace the Pad Assembly perform the following steps.

- Remove all documents from the ADF Paper Chute. Open the ADF by pulling the ADF button up.



- Remove the Pad Assembly by pressing both sides of the clamp so the pad can be pulled out.



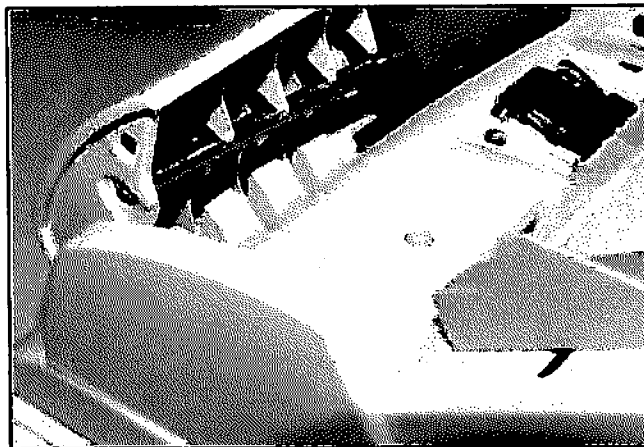
- Attach the new Pad Assembly in reverse of removal. Be sure to seat the pad completely to avoid jamming of paper being fed.

REPLACING THE PICK ROLLER

Replace the Pick Roller by pinching the fixture that holds the Pick Roller shaft in the ADF and fold it down. This will release the end of the Pick Roller shaft with the white drive gear on it. Move the Shaft towards the back of the scanner to remove the bearing end of the Pick Roller Shaft.



Replace the Pick Roller by reverse of the way you removed it. Be sure to put the end of the shaft in the hole on the ADF side then push the entire assembly into the fixture that holds it in place.



Note:

After replacement of any consumable reset the counter for that consumable by following the "Consumables Page Count" Section at the front of these instructions to reset paper counts.

CLEANING LOCATIONS AND FREQUENCIES

Pick Roller and Pad	Cleaning Sheets	Every 1,000 Sheets
	Cloth & Isopropyl Alcohol	Every 1,000 Sheets
Plastic Feed Rollers	Cloth & Isopropyl Alcohol	Every 1,000 Sheets
Sheet Guides	Cloth & Isopropyl Alcohol	Every 5,000 Sheets
Eject Rollers	Cloth & Isopropyl Alcohol	Every 5,000 Sheets
Feed Rollers	Cloth & Isopropyl Alcohol	Every 5,000 Sheets
Glass Surfaces	Cloth & Isopropyl Alcohol	Every 5,000 Sheets

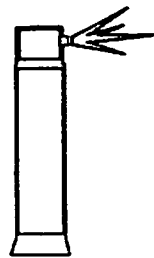
Note:

The scanner will need to be cleaned every day (or possibly more than once a day) if the following paper is scanned.

- Paper with special coating such as carbonless paper.
- Paper with large amount of printing. (Heavy toner or ink)
- Documents with toner that is not fused properly.

CLEANING MATERIALS

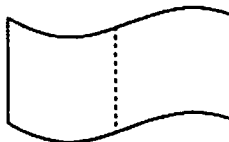
F1 Cleaner
Isopropyl Alcohol



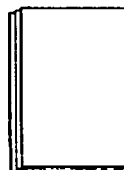
Cotton Swabs



Lint Free
Cleaning Cloths



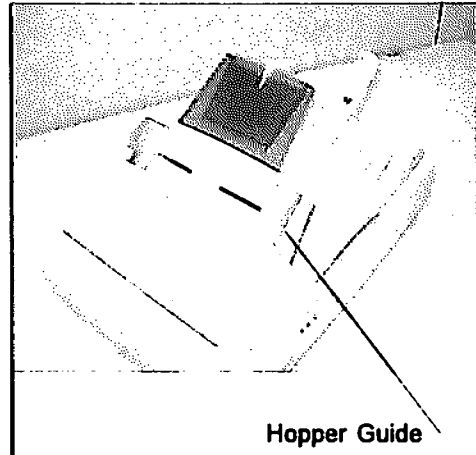
Cleaning Paper



CLEANING THE ROLLERS WITH THE CLEANING PAPER

The cleaning papers are designed to remove only loose paper dust and ink from the rollers. Use the cleaning paper approximately every 1,000 sheets scanned. They are to be used in between the thorough cleanings of the scanner. **Using the cleaning paper does not take the place of the more complete cleanings described later in this section**

- Set the Hopper Guides to the widest width possible.



- Spray the Cleaning Paper lightly with F1 Cleaner and place the Cleaning paper against the right edge of the Hopper Guide. **SCAN** the cleaning paper to feed it through the scanner's ADF. **Do Not Save These Images.** This operation is used only to pass the cleaning paper through the paper feed path. Check the path to see if it needs further cleaning, if you find debris in the paper path perform this cleaning or the **(CLEANING THE ADF WITH LINT-FREE CLOTHS)** in the following steps.
- Place the Cleaning Paper against the Left Hopper Guide and perform the previous step.

CLEANING THE ADF WITH LINT-FREE CLOTHS

Note:

The glass surface inside the fi-5015C ADF becomes hot during scanner operation. Before performing this cleaning turn off the scanner and disconnect the AC adapter from the power outlet, wait at least 15 minutes for the scanner to cool.

- Turn Scanner power off.
- Open the ADF cover by pulling the ADF open. Disconnect the AC power plug. Let the scanner cool for at least 15 minutes after operation. This is to prevent burns to your skin as the lamps will heat the surface of the glass in the feed path.



- Use F1 Cleaner (90% or higher Isopropyl Alcohol) on a lint free cloth and clean the areas shown in the drawing below and to the right. (See following steps to clean properly)

CLEANING THE PAD ASSEMBLY.

- Clean the Pad Assembly using a downward stroke in the direction of document travel through the ADF (shown by the arrow in the drawing to the right) with the lint free cloth moistened lightly with F1 Cleaner (90% or higher Isopropyl Alcohol).

