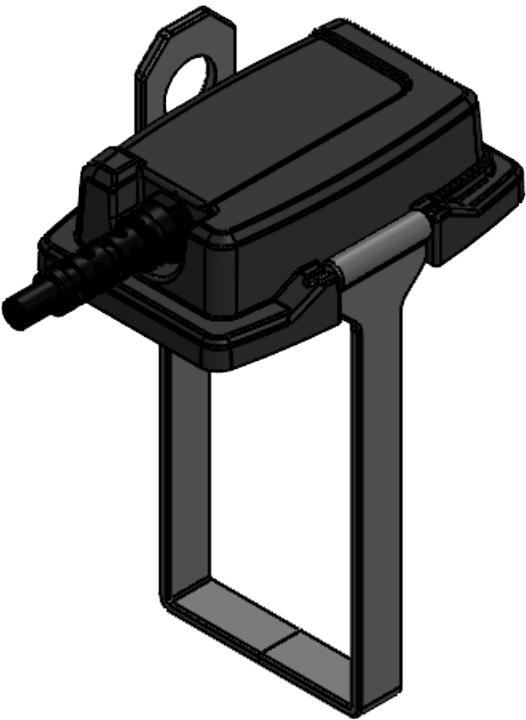


REVISIONS			
REV.	DESCRIPTION	DATE	ENG
B	FAMILY DRAWING FOR KITS CREATED	09/17/21	MM
C	REDRAWN WITH CHANGE: FAMILY DRAWINGS BROKEN OUT INTO SEPARATE DRAWINGS	10/17/2022	MOB



BILL OF MATERIALS			
ITEM NO.	PART NO.	QTY	NAME/DESCRIPTION
1	SN0132-T	1	BATTERY COVER. 9/16-24 THREADED CABLE EXIT
2	SN0008-1	1	PCB
3	SN0017-1-N	1	CONNECTOR, 5 KEYWAY, NO POGO PINS.
4	SN0133-1	1	COVER PLATE
5	SN0012	8	#4 x 1/2" BLACK OXIDE SCREWS
6	SN-404-STRAP	1	BATTERY STRAP
7	SN0270-WT	1	WATER-TIGHT GASKET
8	SN-404-4C-06	1	CABLE: 18 AWG, 4C, PVC JACKET, 9/16TH THREADED SR, .197 DIA.

- NOTES:
- BATTERY NOT INCLUDED.
 - WIRE BATTERY SECTION A IN PARALLEL WITH SECTION B FOR 12V MODE.
 - WIRE BATTERY SECTION A IN SERIES WITH SECTION B FOR 24V MODE.
 - COMPATIBLE WITH BB-2590 & BA-5590 BATTERIES.

UNLESS OTHERWISE SPECIFIED:			
DIMENSIONS ARE IN: INCHES TOLERANCES: .XX: ± 0.03 .XXX: ± 0.005 ANGULAR: .X°: 1° .XX°: 0.5° BREAK EDGES: .005 - .020 FILLET: .005 - .020 SURFACE FINISH: GEOMETRIC TOLERANCING PER: ASME Y14.5 -2009 MATERIAL: SEE DRAWING NOTES FINISH: SEE DRAWING NOTES DO NOT SCALE DRAWING	DRAWN	NAME	DATE
	CHECKED	MM	09/17/21
	COMMENTS:	MOB	09/17/21
	PROPRIETARY AND CONFIDENTIAL THE INFORMATION CONTAINED IN THIS DRAWING IS THE SOLE PROPERTY OF SUPPLYNET, INC. ANY REPRODUCTION IN PART OR AS A WHOLE WITHOUT THE WRITTEN PERMISSION OF SUPPLYNET INC. IS PROHIBITED.		

REF. NUMBER: SN0406			
SupplyNet		706 EXECUTIVE BLVD SUITE B VALLEY COTTAGE, NY 10989	
TITLE: BB2590/BA5590 WATER-TIGHT BATTERY COVER W/ 4C CABLE			
SIZE	DWG. NO.		REV
B	SN-406-KIT-W4		C
SCALE: NA		WEIGHT:	SHEET 1 OF 1