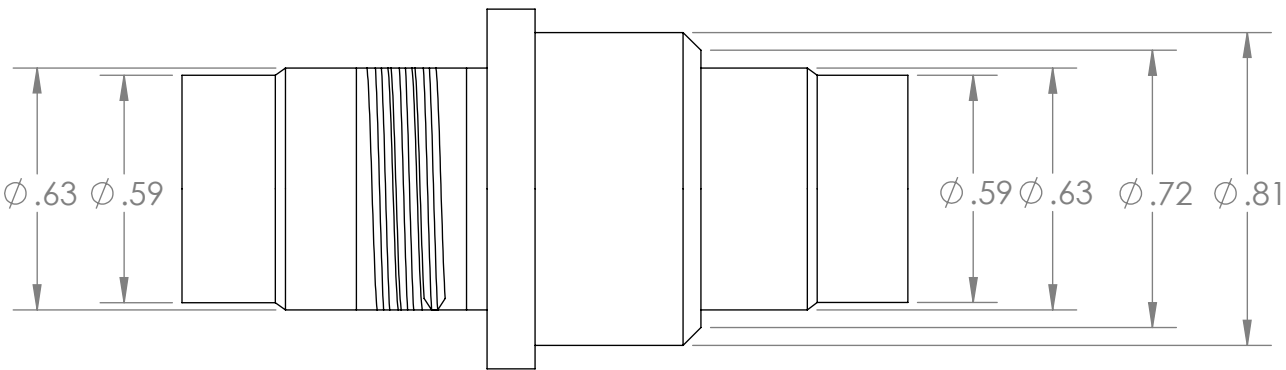
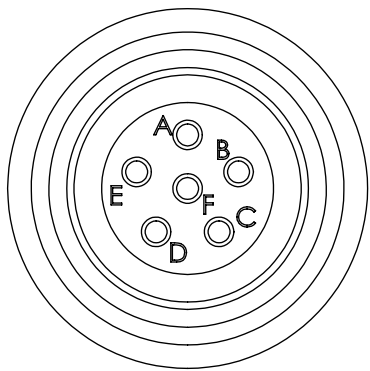
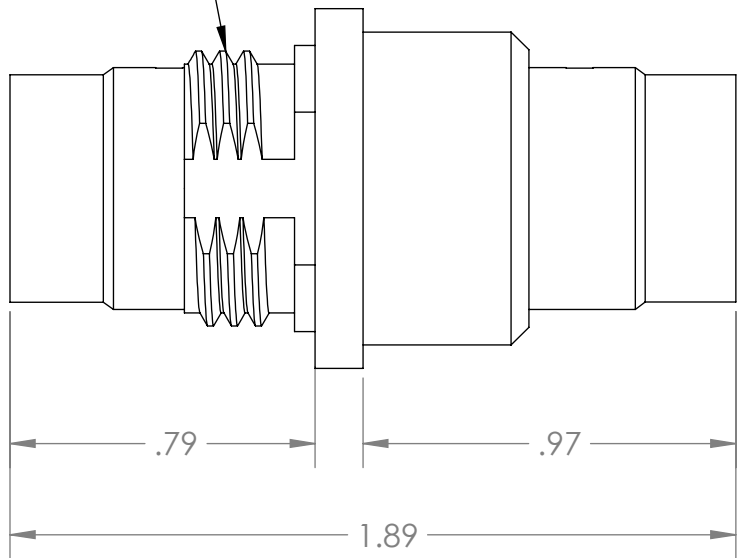
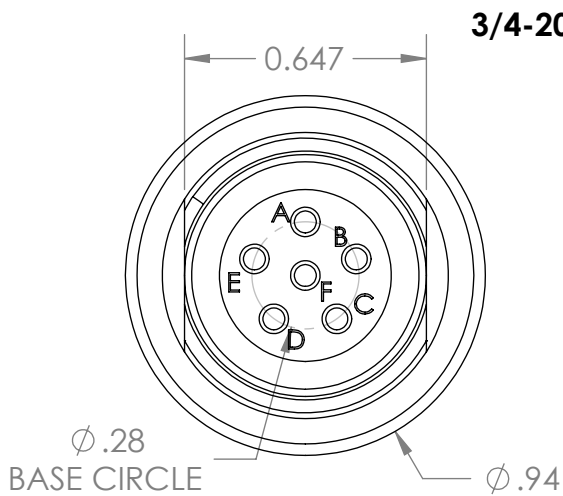
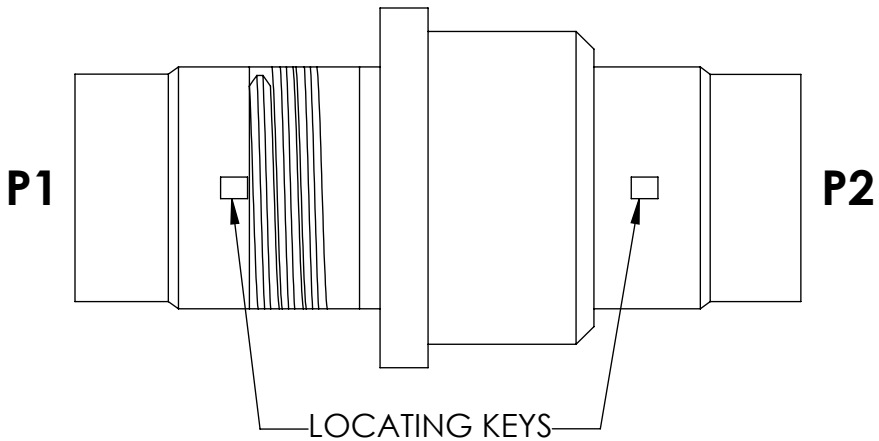
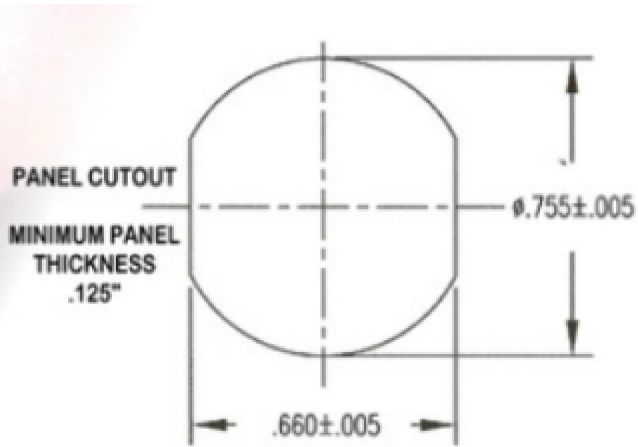
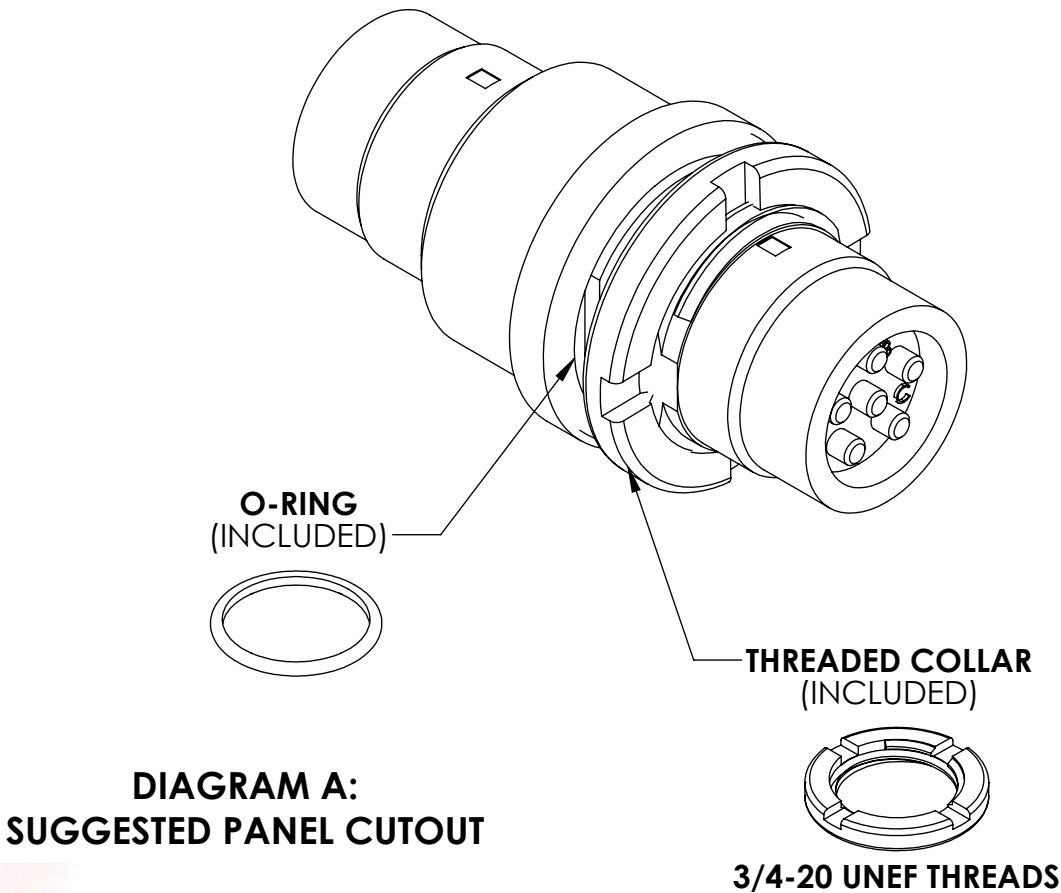


TABLE 1: CONNECTIONS	
P1	P2
A	A
E	B
D	C
C	D
B	E
F	F
SHELL	SHELL

REV	DATE	DESCRIPTION OF CHANGE	ENG
D	03/07/2019	ADDED MATERIAL NOTES (ZONE A8)	LS



- NOTES:**
- RoHS COMPLIANT PRODUCT
 - MATERIALS:
SHELL- TYPE 303 STAINLESS STEEL, COND. A
CONTACT PINS- BRASS CDA 360- GOLD PLATING OVER ELECTROLESS NICKEL
SPANNER NUT- TYPE 303 STAINLESS STEEL, COND. A



UNLESS OTHERWISE SPECIFIED:			
DIMENSIONS ARE IN: INCHES			
TOLERANCES: .XX: ± 0.03			
.XXX: ± 0.005			
ANGULAR: .X°: 1°			
.XX°: 0.5°			
BREAK EDGES: .005 - .020			
FILLETS: .005 - .020			
SURFACE FINISH:			
GEOMETRIC TOLERANCING PER: ASME Y14.5 -2009			
MATERIAL: SEE DRAWING NOTES			
FINISH: SEE DRAWING NOTES			
DO NOT SCALE DRAWING			

NAME	DATE
DRAWN LS	06/05/18
CHECKED RB	06/05/18
COMMENTS:	
PROPRIETARY AND CONFIDENTIAL	
THE INFORMATION CONTAINED IN THIS DRAWING IS THE SOLE PROPERTY OF SUPPLYNET, INC. ANY REPRODUCTION IN PART OR AS A WHOLE WITHOUT THE WRITTEN PERMISSION OF SUPPLYNET INC. IS PROHIBITED.	
CAGE CODE: 1HJX9	

REF. NUMBER:		SN0558	
SupplyNet		706 EXECUTIVE BLVD. SUITE B VALLEY COTTAGE, NY 10989	
TITLE:			
U-283 MALE TO MALE PANEL MOUNT ADAPTOR			
SIZE	DWG. NO.		REV
B	SN-283FT		D
SCALE: NA		WEIGHT:	SHEET 1 OF 1