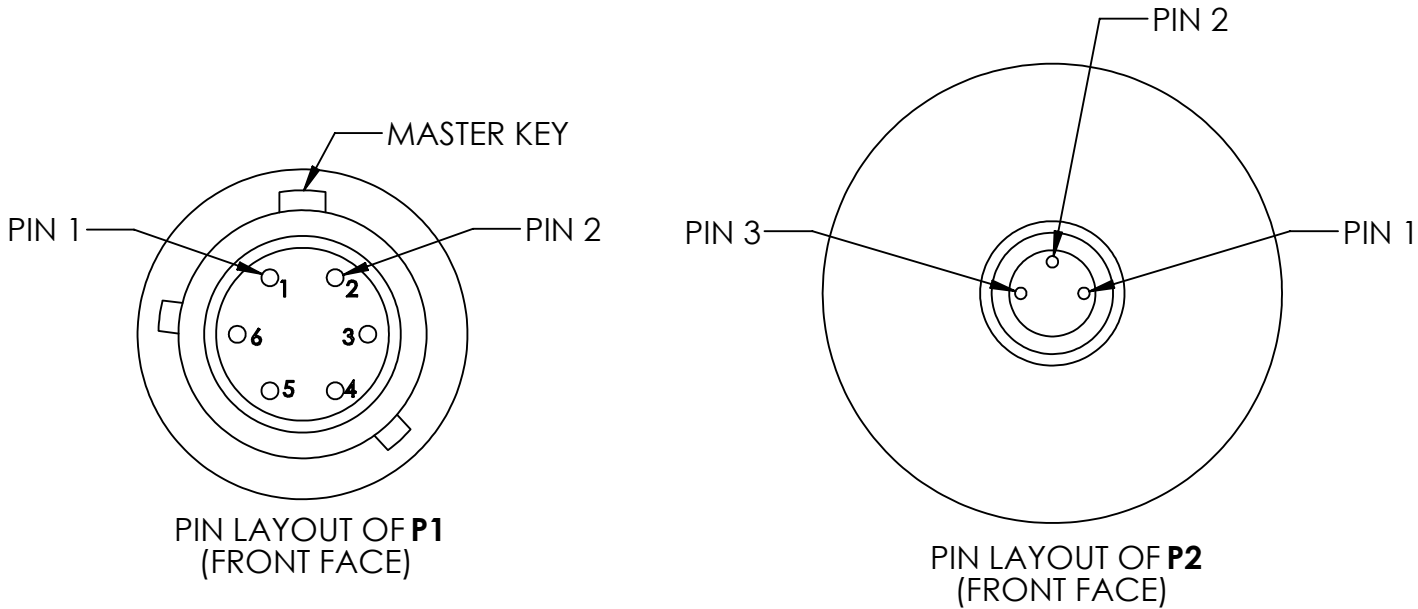
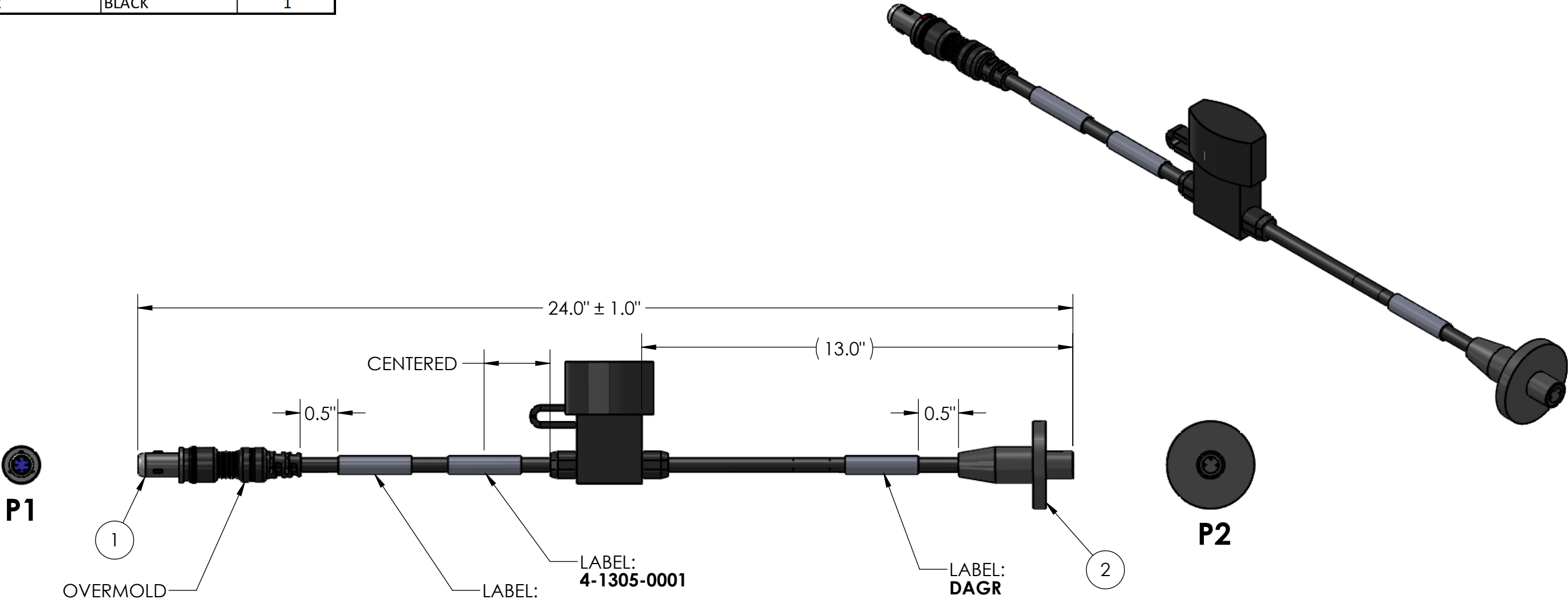


WIRE RUN LIST		
P1	WIRE COLOR	P2
1	RED	3
2	BLACK	1

REV	DATE	DESCRIPTION OF CHANGE	ENG
E	6/2/17	UPDATED FUSE LOCATION	LS



BILL OF MATERIALS			
ITEM NO.	PART NUMBER	QTY	NAME / DESCRIPTION
1	807-309-06ZNU6-6PY	1	NET WARRIOR GLENAIR CONNECTOR 6-PIN, BLACK Zn-Ni FINISH
2	SN-1030-EXTP-0002	1	DAGR 3 PIN POWER CONNECTOR WITH BLADE FUSE CABLE SUB ASSEMBLY 24"
3	6-0429-0000	1	SOLOPAK POLYBAG


UNLESS OTHERWISE SPECIFIED:
DIMENSIONS ARE IN: INCHES
TOLERANCES: .XX: ± 0.03
.XXX: ± 0.005
ANGULAR: .X°: 1°
.XX°: 0.5°
BREAK EDGES: .005 - .020
FILLET: .005 - .020
SURFACE FINISH:

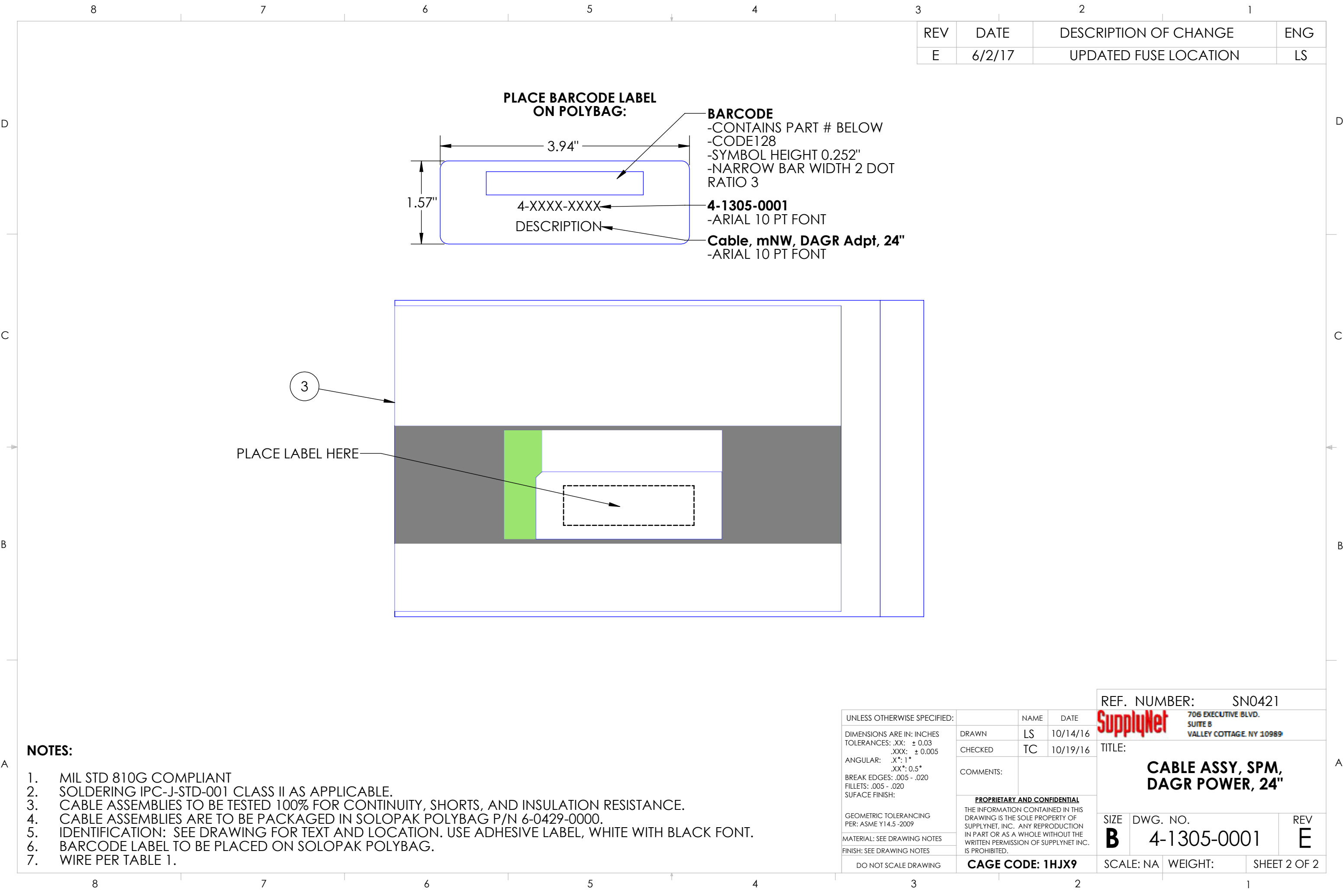
GEOMETRIC TOLERANCING
PER: ASME Y14.5 -2009

MATERIAL: SEE DRAWING NOTES
FINISH: SEE DRAWING NOTES

DO NOT SCALE DRAWING

	NAME	DATE
DRAWN	LS	10/14/16
CHECKED	TC	10/19/16
COMMENTS:		
<u>PROPRIETARY AND CONFIDENTIAL</u> THE INFORMATION CONTAINED IN THIS DRAWING IS THE SOLE PROPERTY OF SUPPLYNET, INC. ANY REPRODUCTION IN PART OR AS A WHOLE WITHOUT THE WRITTEN PERMISSION OF SUPPLYNET INC. IS PROHIBITED.		
CAGE CODE: 1HJX9		

REF. NUMBER:		SNO421	
		706 EXECUTIVE BLVD. SUITE B VALLEY COTTAGE, NY 10989	
TITLE: CABLE ASSY, SPM, DAGR POWER, 24"			
SIZE B	DWG. NO. 4-1305-0001		REV E
SCALE: NA		WEIGHT:	SHEET 1 OF 2



REV	DATE	DESCRIPTION OF CHANGE	ENG
E	6/2/17	UPDATED FUSE LOCATION	LS

- NOTES:**
- MIL STD 810G COMPLIANT
 - SOLDERING IPC-J-STD-001 CLASS II AS APPLICABLE.
 - CABLE ASSEMBLIES TO BE TESTED 100% FOR CONTINUITY, SHORTS, AND INSULATION RESISTANCE.
 - CABLE ASSEMBLIES ARE TO BE PACKAGED IN SOLOPAK POLYBAG P/N 6-0429-0000.
 - IDENTIFICATION: SEE DRAWING FOR TEXT AND LOCATION. USE ADHESIVE LABEL, WHITE WITH BLACK FONT.
 - BARCODE LABEL TO BE PLACED ON SOLOPAK POLYBAG.
 - WIRE PER TABLE 1.

UNLESS OTHERWISE SPECIFIED:		NAME	DATE	<div>SupplyNet</div> <div>706 EXECUTIVE BLVD. SUITE B VALLEY COTTAGE, NY 10989</div>		
DIMENSIONS ARE IN: INCHES		DRAWN	LS	10/14/16		TITLE: <div>CABLE ASSY, SPM, DAGR POWER, 24"</div>
TOLERANCES: .XX: ± 0.03 .XXX: ± 0.005		CHECKED	TC	10/19/16		
ANGULAR: .X°: 1° .XX°: 0.5°		COMMENTS:				
BREAK EDGES: .005 - .020 FILLETS: .005 - .020 SUFACE FINISH:						
GEOMETRIC TOLERANCING PER: ASME Y14.5-2009						
MATERIAL: SEE DRAWING NOTES		<div><div>THE INFORMATION CONTAINED IN THIS DRAWING IS THE SOLE PROPERTY OF SUPPLYNET, INC. ANY REPRODUCTION IN PART OR AS A WHOLE WITHOUT THE WRITTEN PERMISSION OF SUPPLYNET INC. IS PROHIBITED.</div><div>SIZE B</div><div>DWG. NO. 4-1305-0001</div><div>REV E</div></div>				
FINISH: SEE DRAWING NOTES						
DO NOT SCALE DRAWING						
CAGE CODE: 1HJX9		SCALE: NA		WEIGHT:		SHEET 2 OF 2