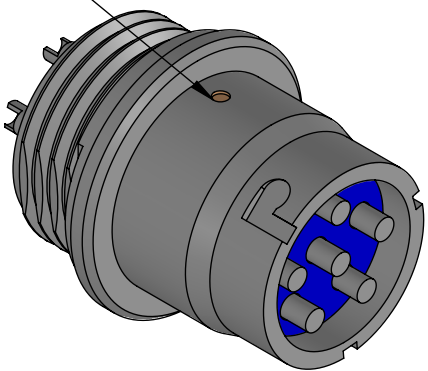
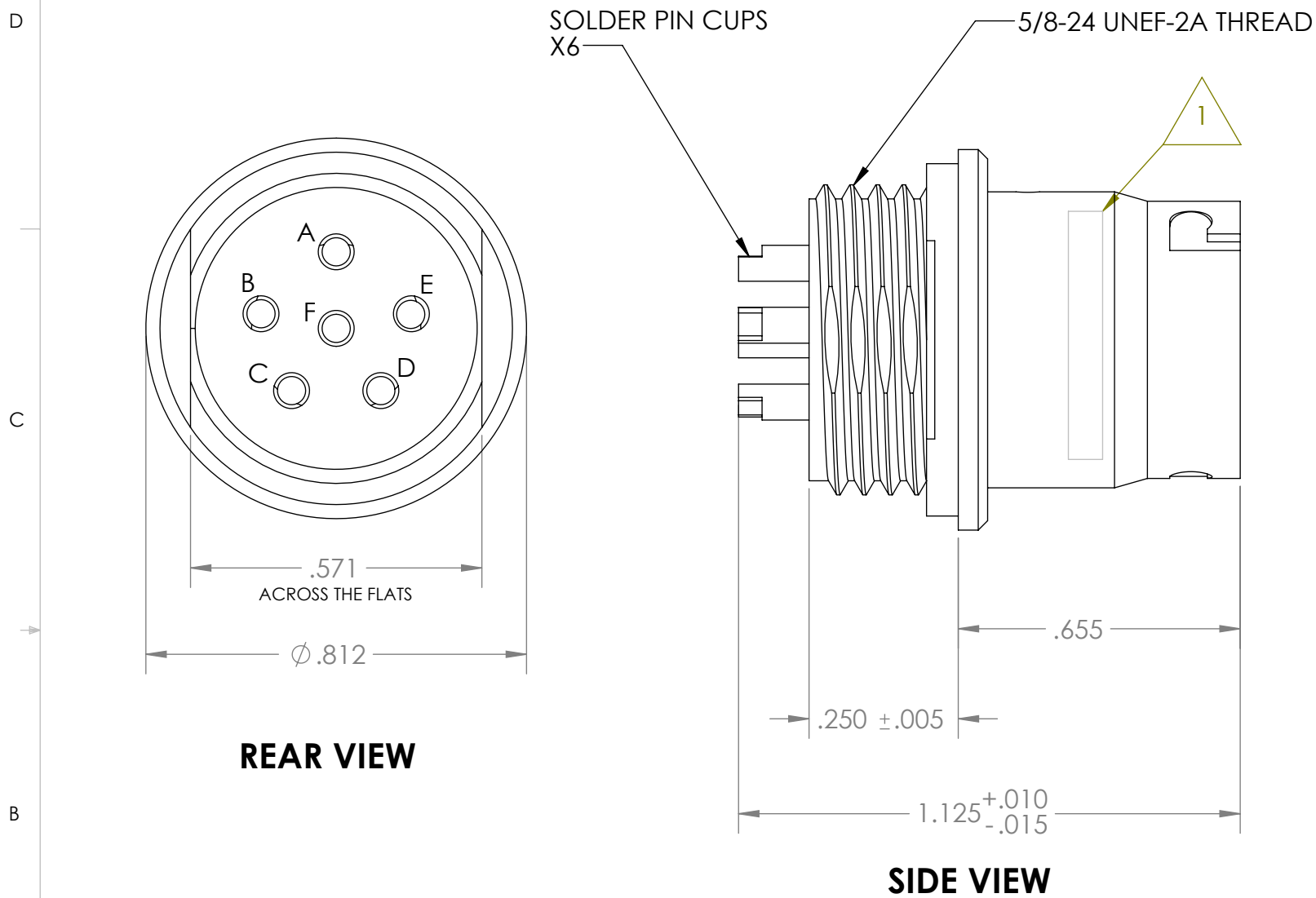


REV	DATE	DESCRIPTION OF CHANGE	ENG
A	7/20/2021	INITIAL RELEASE	TC



NOTES:

1. MARKING SHALL BE IN ACCORDANCE WITH MIL-M-13231 AND SHALL CONTAIN: PCI-683S-NN 0CS66 XXXX (XXXX=YR.WK.)
2. ELECTRICAL SHALL BE IN ACCORDANCE WITH MIL-DTL-55116
INSULATION RESISTANCE PER 3.5.1 @500VDC >1,000 MEGOHMS
DIELECTRIC WITHSTANDING VOLTAGE PER 4.7.1 SEA LEVEL @500 VAC
3. AIR PRESSURE PER MIL-C-55116 4.8.2
@2.5 PSI TO FRONT AND THEN REAR OF CONNECTOR
4. NO NUT INCLUDED.

UNLESS OTHERWISE SPECIFIED:		NAME		DATE		SupplyNet		706 EXECUTIVE BLVD.			
DIMENSIONS ARE IN: INCHES TOLERANCES: .XXX: ± 0.005 ANGULAR: .X°: +/- 0.5°		DRAWN	TC		7/19/21		SUITE B VALLEY COTTAGE, NY 10989				
		CHECKED	RM		7/19/21						
		COMMENTS:						TITLE:			
						ELECTRICAL CONNECTOR RECEPTACLE					
GEOMETRIC TOLERANCING PER: ASME Y14.5 -2009		<u>PROPRIETARY AND CONFIDENTIAL</u>				SIZE B		DWG. NO. PCI-683S-NN		REV A	
		THE INFORMATION CONTAINED IN THIS DRAWING IS THE SOLE PROPERTY OF SUPPLYNET, INC. ANY REPRODUCTION IN PART OR AS A WHOLE WITHOUT THE WRITTEN PERMISSION OF SUPPLYNET INC. IS PROHIBITED.									
DO NOT SCALE DRAWING		CAGE CODE: 1HJX9				SCALE: NA		WEIGHT:		SHEET 1 OF 1	