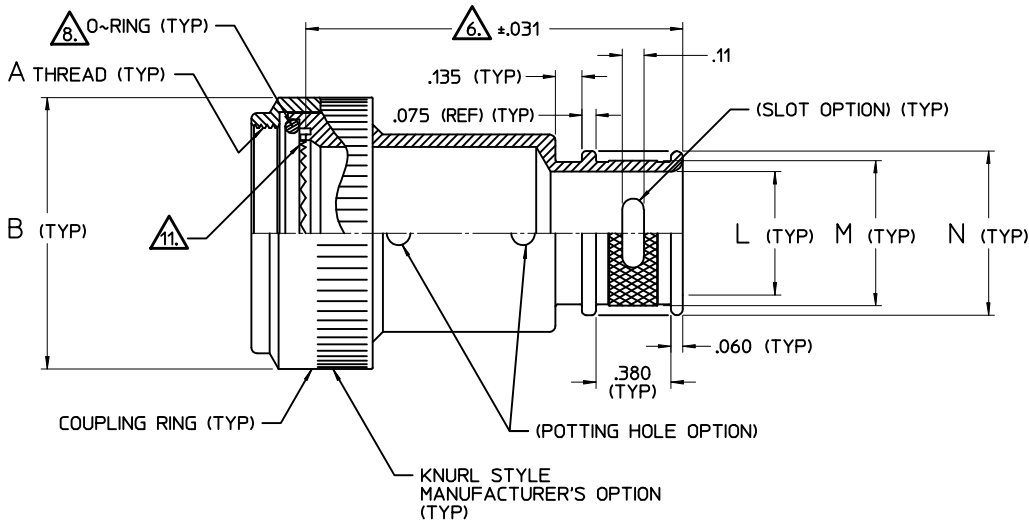
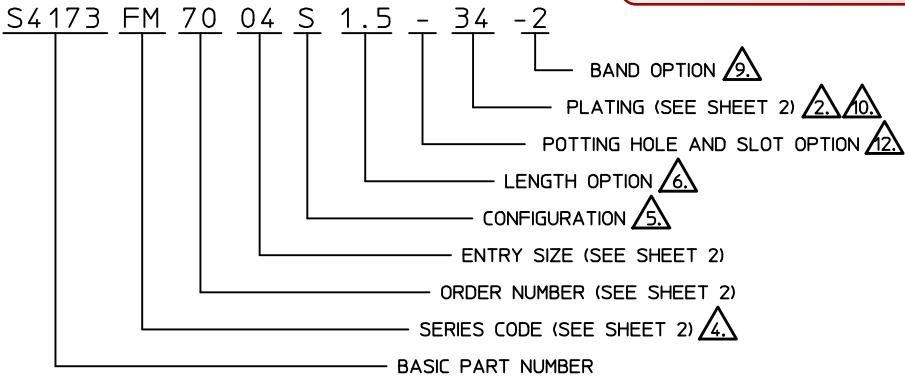


Joslyn Sunbank  
CONFIDENTIAL

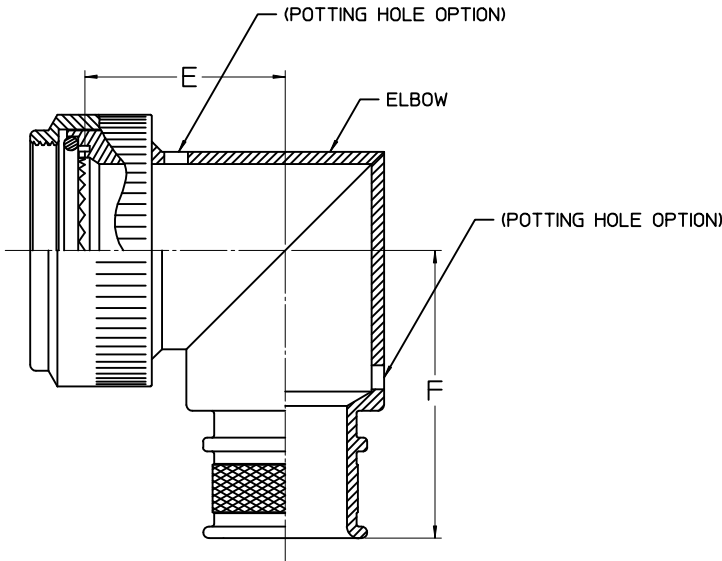
REVISIONS		DATE	APPROVED
LTR.	DESCRIPTION		
D	ECD #04839 Lee	20-May-98	John J.
E	ECD #05865 Lee	26-Oct-98	John J.
F	ECD #06140 Lee	7-Dec-98	Terri
G	ECD #06194 Lee	10-Dec-98	John J.
H	ECD #06214 <i>Frewen</i>	14-Dec-98	John J.
J	ECD #06240 <i>Carl</i>	22-Dec-98	Leonardo
K	ECD #09268 Gary	8-Sep-00	John J.
L	ECD #10430 John J.	24-Jan-01	Gary
M	ECD #12892 Leonardo	12-May-03	Leonardo
N	ECD #12957 Leonardo	9-Jul-03	Leonardo
P	ECD #13211 Terri	18-Sep-03	Terri
R	ECD #13667 & #13397 John E.	23-Mar-04	John E.
S	ECD #13822 John E.	18-May-04	John E.
T	ECD #14662 Terri	8-Apr-05	Terri
U	DCN# 16244 PETERSON	11-9-06	J. LEE

NOT FOR PUBLIC RELEASE

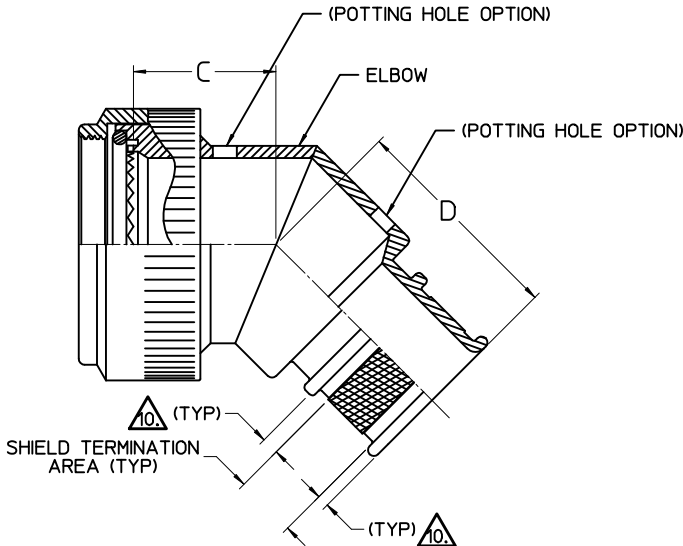
EXAMPLE PART NUMBER



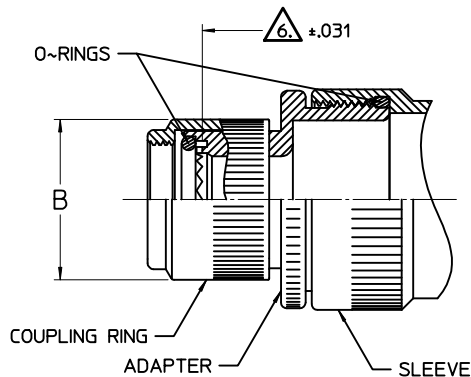
STRAIGHT CONFIGURATION 5.



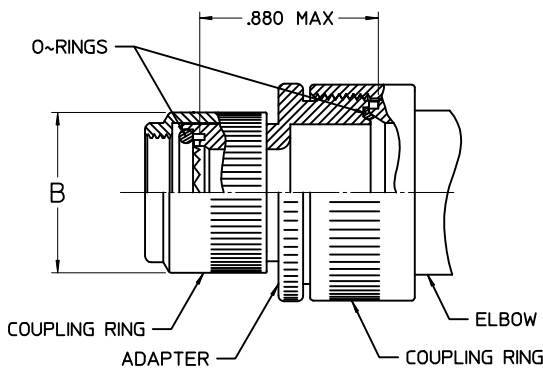
90° CONFIGURATION 5.



45° CONFIGURATION 5.





TWO~PIECE ASSEMBLY 5.  
(STRAIGHT CONFIGURATION ONLY)



TWO~PIECE ASSEMBLY 7.  
(45° & 90° CONFIGURATION ONLY)

NOTES:

- ASSEMBLY IDENTIFIED PER MIL-STD-130.
- INSERT PLATING CODE NUMBER FOR FINISH REQUIRED.
- MATERIAL: ADAPTER ASSEMBLY - ALUMINUM ALLOY PER QQ-A-225, ASTM B221, OR ASTM B85. SEE PLATING CODE 30S AND 30A FOR OPTIONAL ASSEMBLY MATERIALS OF STAINLESS STEEL OR ALUMINUM BRONZE. O-RINGS - SILICONE PER ZZ-R-765
- INSERT SERIES CODE LETTER DESIGNATOR TO DEFINE THE ACCESSORY INTERFACE REQUIRED.
- INSERT ONE OF THE FOLLOWING LETTER DESIGNATORS TO DEFINE THE CONFIGURATION REQUIRED.  
\*S\* - FOR STRAIGHT CONFIGURATION  
\*A\* - FOR 45° CONFIGURATION  
\*R\* - FOR 90° CONFIGURATION
- LENGTH TO BE SPECIFIED BY CUSTOMER. 1.50 INCH MINIMUM ORDER LENGTH FOR 1-PIECE ASSY, 2.00 INCH MINIMUM ORDER LENGTH 2-PIECE ASSY, IN .5 INCH INCREMENTS. (CONSULT FACTORY FOR SHORTER LENGTHS ON STRAIGHT CONFIGURATION ONLY)
- WHEN MAXIMUM ENTRY SIZE IS EXCEEDED A TWO-PIECE ADAPTER WILL BE SUPPLIED. DIMENSIONS \*C\*, \*D\*, \*E\* & \*F\* MAY INCREASE.
- NO O-RING SUPPLIED ON SERIES CODE \*C\* AND CODE \*X\*.
- INSERT ONE OF THE FOLLOWING DESIGNATORS TO DEFINE THE BAND OPTION REQUIRED.  
\*-2\* - SUPPLIED WITH S3175-2 BAND  
\*-3\* - SUPPLIED WITH S4290-2 BAND (OMIT IF NOT REQUIRED)
- FOR PLATING CODE 70, THE CADMIUM/NICKEL INTERFACE WILL BE COATED WITH POLYSULFIDE SEALANT PER MIL-S-83430 CLASS A (SEE DRAWING FOR LOCATION)
- CODE \*E\* IS SUPPLIED WITHOUT CONNECTOR INTERFACE TEETH.
- REPLACE \*-\* AS FOLLOWS TO SELECT OPTIONS:  
\*P\* FOR POTTING HOLES, 2 EACH, LOCATION APPROXIMATELY AS SHOWN  
\*S\* FOR INDIVIDUAL SHIELD SLOTS, EQUALLY SPACED:  
(APPROXIMATELY 50% OF CROSS SECTIONAL AREA REMOVED)  
2 PLACES FOR ENTRY SIZES 02 THRU 11  
3 PLACES FOR ENTRY SIZES 12 THRU 24  
4 PLACES FOR ENTRY SIZES 25 THRU 32  
\*PS\* FOR POTTING HOLES AND SLOTS

UNLESS OTHERWISE SPECIFIED DIMENSIONS ARE IN INCHES (MILLIMETERS IN PARENTHESIS ARE FOR REFERENCE ONLY)  TOLERANCES  FRAC. DECIMAL ANGLES  +1/32 +.X .030 (.761) +.2° +.XX .010 (.25) +.XXX .005 (.13)  THE INFORMATION DISCLOSED HEREIN WAS ORIGINATED BY AND IS THE PROPERTY OF JOSLYN SUNBANK CO. LLC. AND, EXCEPT FOR USES EXPRESSLY GRANTED TO THE UNITED STATES GOVERNMENT, JOSLYN SUNBANK CO. LLC RESERVES ALL PATENT, PROPRIETARY, DESIGN, USE, SALE, MANUFACTURING, AND REPRODUCTION RIGHTS THEREOF. THIS DOES NOT APPLY TO ANY VENDOR PARTS.	TITLE	SIGNATURE	DATE	 JOSLYN SUNBANK COMPANY, LLC Paso Robles, California
	DFSM	Keith Bailey	26-Nov-96	
	CHECK	John Jones	27-Nov-96	
	DESIGN			
	PR.ENG.			
APPROVAL Alan Miklos  RELEASE DATE 27-Nov-96  © _____				ADAPTER ASSEMBLY STRAIGHT, 45° & 90° RFI/EMI, ENVIRONMENTAL. MATES TO CONNECTORS NOTED. 
CODE IDENT. 07418		S4173		
SCD NO:		DOC. NO: 012983		SCALE: N.T.S.
				SHT: 1 OF 2

ORDER NUMBER	SHELL SIZE (REF)						A THREAD	B MAX DIA	C MAX DIM	D MAX DIM	E MAX DIM	F MAX DIM	MAX ENTRY 1-PIECE ASSY				
	CODE C	CODE E	CODE F	CODE FM	CODE G	CODE X							CODE C	CODE F & FM	CODE G	CODE X	CODE E
03		8	8/9			8	.438 - 28 UNEF - 2B	.650	.531	.94	.639	1.110		04		04	04
04	8						.500 - 20 UNF - 2B	.617	.531	.94	.639	1.110	04				
05					8		.500 - 28 UNEF - 2B	.705	.849	1.02	.995	1.263			06		
06		10	10/11			10	.562 - 24 UNEF - 2B	.770	.594	1.00	.664	1.140		06		06	06
07	10						.625 - 24 UNEF - 2B	.734	.594	1.00	.664	1.140	06				
08					10		.625 - 28 UN - 2B	.840	.874	1.05	1.058	1.330			08		
09		12	12/13			12	.688 - 24 UNEF - 2B	.890	.618	1.05	.688	1.160		08		08	08
10	12						.750 - 20 UNEF - 2B	.858	.618	1.05	.688	1.160	08				
12		14	14/15			14	.812 - 20 UNEF - 2B	1.020	.656	1.09	.705	1.190		10		10	10
13	14						.875 - 20 UNEF - 2B	.984	.656	1.09	.705	1.190	09				
14					14		.875 - 28 UN - 2B	1.105	.913	1.08	1.152	1.463			11		
15		16	16/17			16	.938 - 20 UNEF - 2B	1.150	.688	1.15	.732	1.210		12		12	12
16	16						1.000 - 20 UNEF - 2B	1.112	.688	1.15	.732	1.210	11				
17					16		1.000 - 28 UN - 2B	1.245	.932	1.10	1.198	1.533			12		
18	18	18	18/19			18	1.062 - 18 UNEF - 2B	1.230	.748	1.19	.803	1.221	12	14		14	13
21					18		1.125 - 28 UN - 2B	1.385	.965	1.13	1.277	1.603			15		
22	20	20	20/21			20	1.188 - 18 UNEF - 2B	1.360	.773	1.25	1.031	1.281	14	16		16	15
24					20		1.250 - 28 UN - 2B	1.593	.991	1.16	1.339	1.707			17		
25	22	22	22/23			22	1.312 - 18 UNEF - 2B	1.480	.800	1.32	1.156	1.351	16	18		18	17
27					22		1.375 - 28 UN - 2B	1.625	1.017	1.18	1.402	1.723			19		
28	24	24	24/25			24	1.438 - 18 UNEF - 2B	1.723	.823	1.38	1.219	1.410	18	20		20	19
29					24		1.500 - 28 UN - 2B	1.812	1.056	1.22	1.495	1.816			22		
31	28						1.750 - 18 UNS - 2B	1.969	1.041	1.50	1.281	1.531	22				
34	32						2.000 - 18 UNS - 2B	2.119	1.092	1.62	1.593	1.651	26				
39	36						2.250 - 16 UN - 2B	2.469	1.136	1.75	1.718	1.781	28				
64				9/A			M12 x 1.0 - 6H	.703	.531	.94	.639	1.110		04		04	
65				11/B			M15 x 1.0 - 6H	.820	.594	1.00	.664	1.140		06		06	
67				13/C			M18 x 1.0 - 6H	.940	.618	1.05	.688	1.160		09		09	
69				15/D			M22 x 1.0 - 6H	1.070	.656	1.09	.705	1.190		10		10	
70				17/E			M25 x 1.0 - 6H	1.210	.688	1.15	.732	1.210		12		12	
71				19/F			M28 x 1.0 - 6H	1.360	.748	1.19	.803	1.221		14		14	
72				21/G			M31 x 1.0 - 6H	1.480	.773	1.25	1.031	1.281		16		16	
74				23/H			M34 x 1.0 - 6H	1.600	.800	1.32	1.156	1.351		18		18	
77				25/J			M37 x 1.0 - 6H	1.700	.823	1.38	1.219	1.410		20		20	

SERIES CODE	CONNECTOR SERIES DESCRIPTION
C	MIL-C-5015 'G' CLASS A,D,K,L,S,U, & W; MIL-C-26482 SERIES 2 CLASS A,E,L,S, & W; MS3400, 01, 04, 06, 50, 51, 54, 56, 70, 71, 72, 74, 75,: & 76; MIL-C-83723 SERIES 1 & 3, MIL-C-81703 SERIES 3 & NAS 1599.
E	MIL-C-26482 SERIES 1, MS3110, 16, 20, 26, CLASS E, F, & P
F	MIL-C-38999 SERIES 1 & 2, MS27466, 67, 68, 72, 73, 74, 79, 80, 81, 84, 97, MS27656 CLASS E & T.
FM	MIL-C-38999 SERIES 3 & 4, DOD-C-38999/20, 24, 26, 40, 46, & 47 CLASS C, F, K, & W. ('A' THREAD IS METRIC)
G	MIL-C-81511 SERIES 1, 2, 3, & 4, AMPHENOL OR CINCH 348 & DEUTSCH *815, CLASS F & W
X	BENDIX SJTO0RT, SJTG06RT, SJTG06RT, VG96912

Joslyn Sunbank  
CONFIDENTIAL

REVISIONS			
LTR.	DESCRIPTION	DATE	APPROVED
U	SEE SHEET 1		

NOT FOR PUBLIC RELEASE

ENTRY SIZE	L DIA	M (REF) DIA	N (REF) DIA
02	.125	.250	.312
03	.188	.312	.375
04	.250	.375	.438
05	.312	.438	.500
06	.375	.500	.562
07	.438	.562	.625
08	.500	.625	.688
09	.562	.688	.750
10	.625	.750	.812
11	.688	.812	.875
12	.750	.875	.938
13	.812	.938	1.000
14	.875	1.000	1.062
15	.938	1.062	1.125
16	1.000	1.125	1.188
17	1.062	1.188	1.250
18	1.125	1.250	1.312
19	1.188	1.312	1.375
20	1.250	1.375	1.438
21	1.312	1.438	1.500
22	1.375	1.500	1.562
23	1.438	1.562	1.625
24	1.500	1.625	1.688
25	1.562	1.688	1.750
26	1.625	1.750	1.812
28	1.750	1.875	1.938
30	1.875	2.000	2.062
32	2.000	2.125	2.188

PLATING LEGEND	
CODE NUMBER	FINISH
04	CADMIUM PLATE, OLIVE DRAB, PER QQ-P-416, TYPE II, CLASS 3.
12	ELECTROLESS NICKEL PER AMS2404, .0005 MIN THICKNESS.
30S	300 SERIES STAINLESS STEEL, PASSIVATED PER ASTM A967
34	CADMIUM PLATE, OLIVE DRAB, PER MIL-C-85049, FINISH W.
70	CADMIUM, OLIVE DRAB PER QQ-P-416, TYPE II, CLASS 3, OVER ELECTROLESS NICKEL SHIELD TERMINATION TO BE FREE OF CADMIUM PLATING.
30A	ALUMINUM BRONZE BASE MATERIAL PER QQ-C-00465, CLEAN AND DEGREASE

The product described in this document is a proprietary item and trade secret of Joslyn Sunbank Company. Disclosure of its contents or any part, feature, design, function or component process thereof, is not to be made unless written consent thereto is given by Joslyn Sunbank Company.

CODE IDENT.	07418	S4173	
SCD NO:		DOC. NO: 022155	SCALE: N.T.S. SHT: 2 OF 2