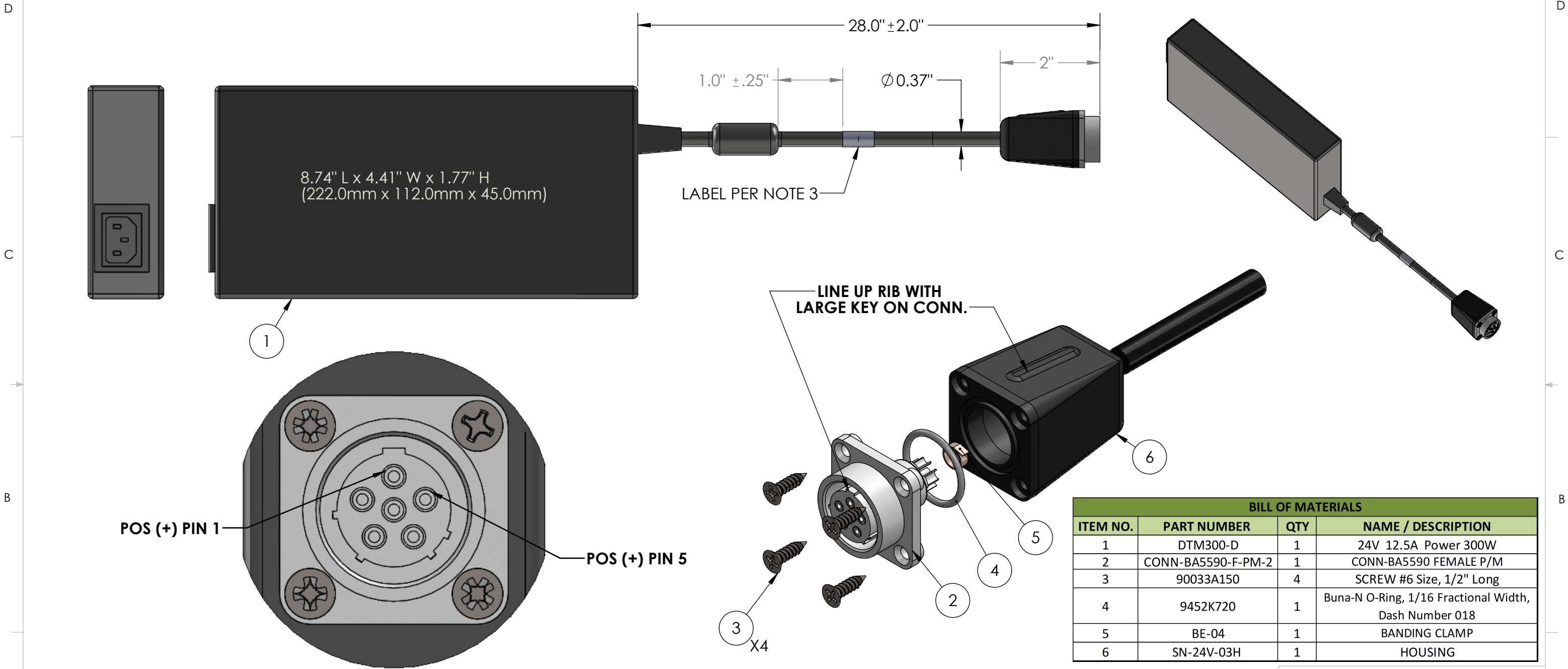


TABLE 1: WIRE RUN LIST		
P1 (ITEM 1)	COLOR	P2 (ITEM 2)
V(+)	RED	5
V(-)	BLACK	1
CAP AND STOWE UNUSED WIRES		

REV	DATE	DESCRIPTION OF CHANGE	ENG
B	1/5/21	UPDATED BOM	TC



NOTES:

- 1) SOLDERING IAW IPC-J-STD-001 CLASS II AS APPLICABLE.
2) CABLE ASSEMBLIES TO BE TESTED 100% FOR CONTINUITY, SHORTS, AND INSULATION RESISTANCE (250 VDC @ 100MOHM MINIMUM).
3) IDENTIFICATION LABEL:
PN: SN-SN-24V-03 REV. "X" (REV. "X" AS PER PO)
CAGE CODE: 1HJX9
MFD: MM/YY
4) MANUFACTURE AND INSPECT IAW IPC/WHMA A-620 CLASS 2.
5) WIRE PER TABLE 1.

BILL OF MATERIALS			
ITEM NO.	PART NUMBER	QTY	NAME / DESCRIPTION
1	DTM300-D	1	24V 12.5A Power 300W
2	CONN-BA5590-F-PM-2	1	CONN-BA5590 FEMALE P/M
3	90033A150	4	SCREW #6 Size, 1/2" Long
4	9452K720	1	Buna-N O-Ring, 1/16 Fractional Width, Dash Number 018
5	BE-04	1	BANDING CLAMP
6	SN-24V-03H	1	HOUSING

UNLESS OTHERWISE SPECIFIED:		NAME	DATE	SupplyNet		706 EXECUTIVE BLVD. SUITE B VALLEY COTTAGE, NY 10989	
DIMENSIONS ARE IN: INCHES		DRAWN	TC	3/8/19	TITLE: 24 VDC/12.5 AMP OUTPUT POWER ADAPTOR WITH CONN-BA5590-F-PM-2 CONNECTOR		
TOLERANCES: .XX: ± 0.03		CHECKED	RB	3/8/19			
ANGULAR: .X°: 1°		COMMENTS:					
.XX°: 0.5°							
BREAK EDGES: .005 - .020							
FILLETS: .005 - .020		<u>PROPRIETARY AND CONFIDENTIAL</u> THE INFORMATION CONTAINED IN THIS DRAWING IS THE SOLE PROPERTY OF SUPPLYNET, INC. ANY REPRODUCTION IN PART OR AS A WHOLE WITHOUT THE WRITTEN PERMISSION OF SUPPLYNET INC. IS PROHIBITED.		SIZE	DWG. NO.	REV	
SUFACE FINISH:				B	SN-24V-03	B	
GEOMETRIC TOLERANCING PER: ASME Y14.5 -2009							
MATERIAL: SEE DRAWING NOTES		CAGE CODE: 1HJX9			SCALE: NA	WEIGHT:	SHEET 1 OF 1
FINISH: SEE DRAWING NOTES							
DO NOT SCALE DRAWING							