

REV	DATE	DESCRIPTION OF CHANGE	ENG
A	02/18/14	RELEASED. SEE DCN SN0084F	RJB

D

D

C

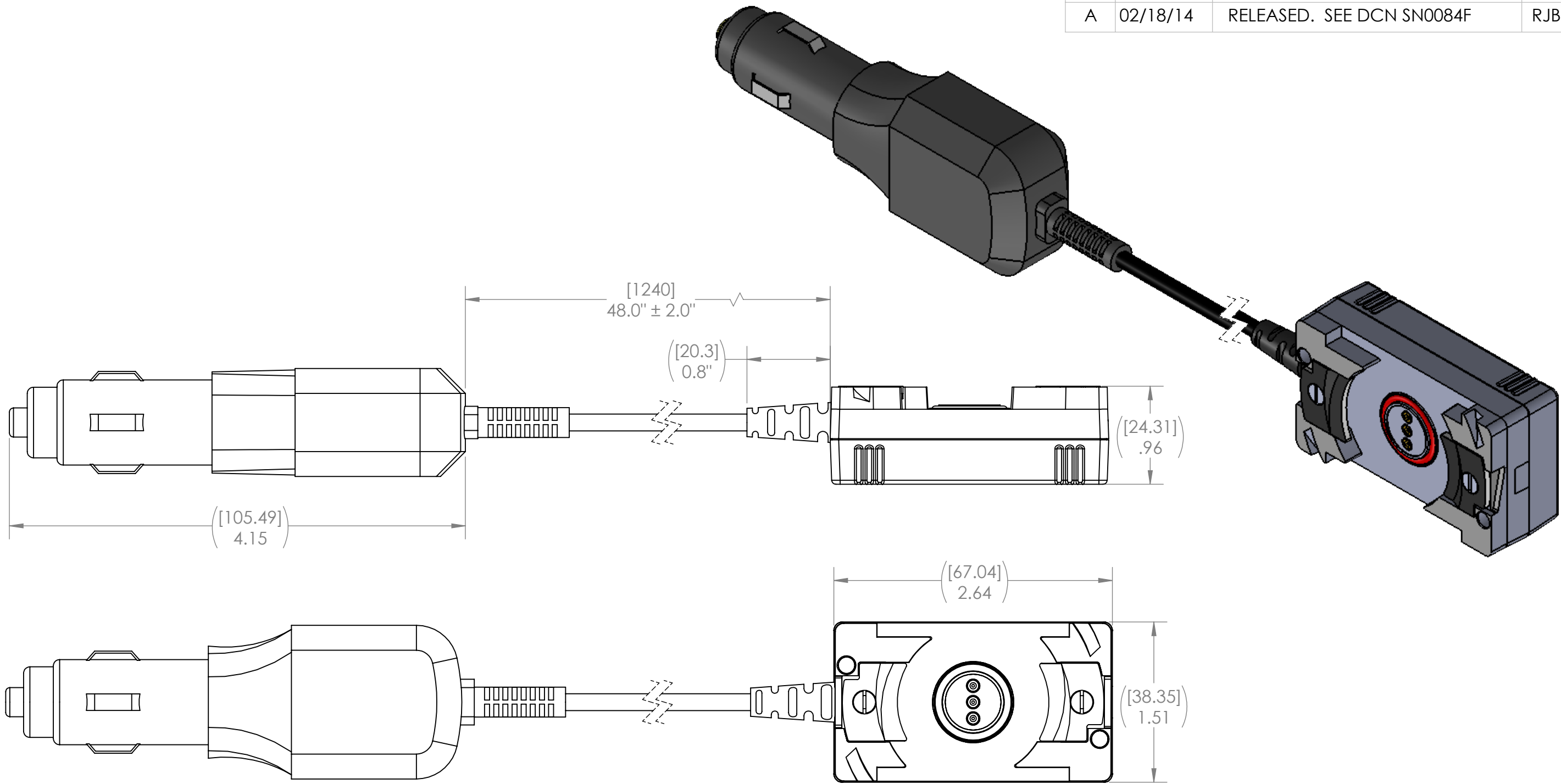
C

B

B

A

A



NOTES:
 1) PCB TO BE SOLDERED IAW IPC-J-STD-001 AS APPLICABLE.
 2) PCB INSTALLATION AND WIRING INSTRUCTIONS ON SHEET 3.
 3) PCB AND FASTENING NUTS ARE INSTALLED OVER THESE SCREWS.

UNLESS OTHERWISE SPECIFIED:
 DIMENSIONS ARE IN: INCHES
 TOLERANCES: .XX: ± 0.03
 .XXX: ± 0.005
 ANGULAR: .X°:]°
 .XX°: 0.5°
 BREAK EDGES: .005 - .020
 FILLETS: .005 - .020
 SURFACE FINISH:
 GEOMETRIC TOLERANCING
 PER: ASME Y14.5 -2009
 MATERIAL: SEE DRAWING NOTES
 FINISH: SEE DRAWING NOTES
 DO NOT SCALE DRAWING

	NAME	DATE
DRAWN	RJB	04/11/13
CHECKED	RJB	04/11/13
COMMENTS:		

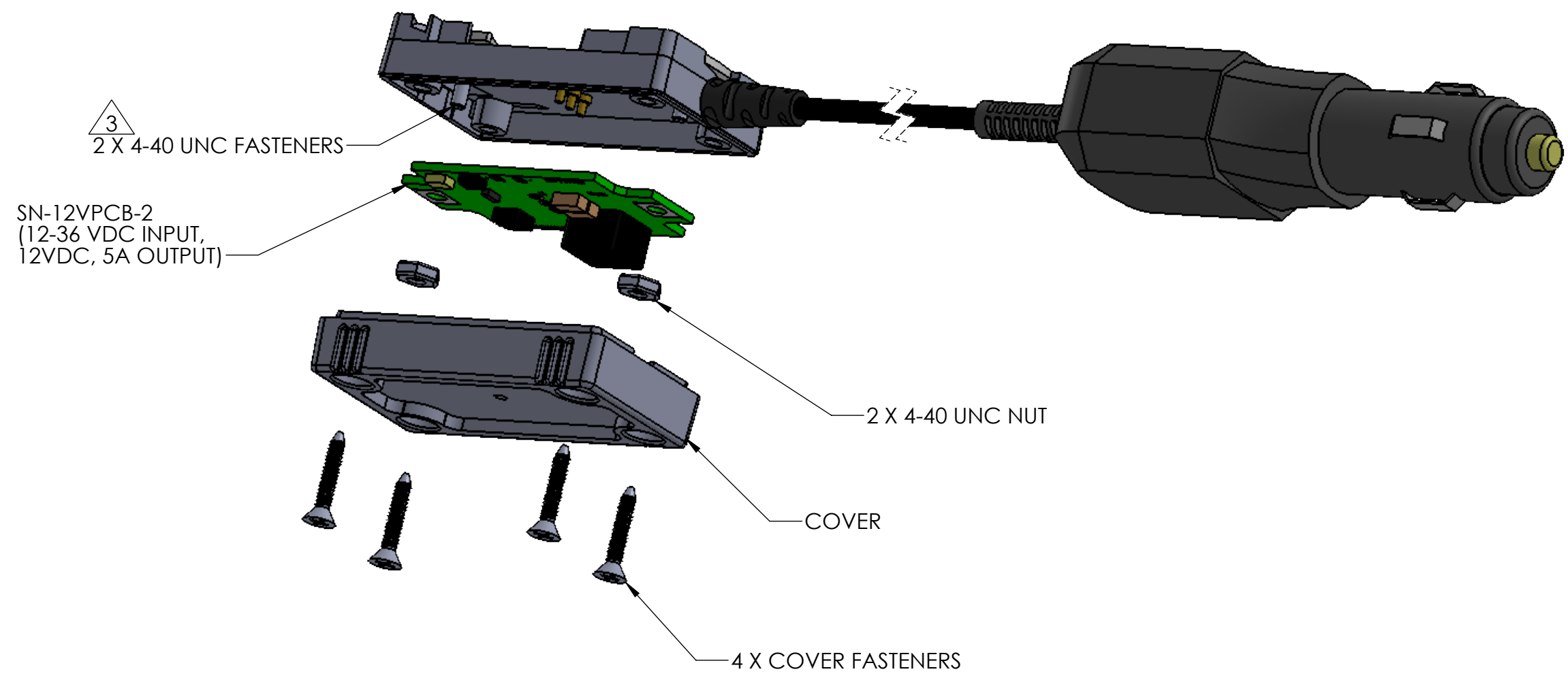
PROPRIETARY AND CONFIDENTIAL
 THE INFORMATION CONTAINED IN THIS DRAWING IS THE SOLE PROPERTY OF SUPPLYNET, INC. ANY REPRODUCTION IN PART OR AS A WHOLE WITHOUT THE WRITTEN PERMISSION OF SUPPLYNET INC. IS PROHIBITED.

CAGE CODE: 1HJX9

REF. NUMBER: SNO084		706 EXECUTIVE BLVD. SUITE B VALLEY COTTAGE, NY 10989	
SupplyNet			
TITLE: PRC 152 TO CIG ADAPTOR WITH INTEGRATED 12V REGULATOR			
SIZE	DWG. NO.	REV	
B	SN-330	A	
SCALE: NA	WEIGHT:	SHEET 1 OF 3	

8 7 6 5 4 3 2 1

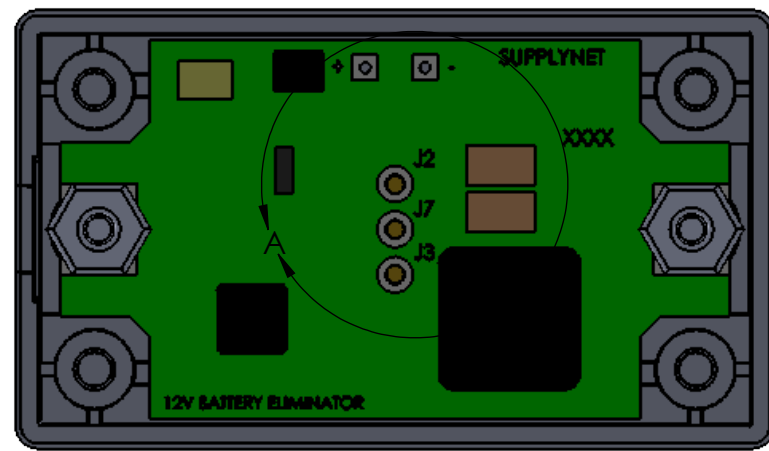
D
C
B
A



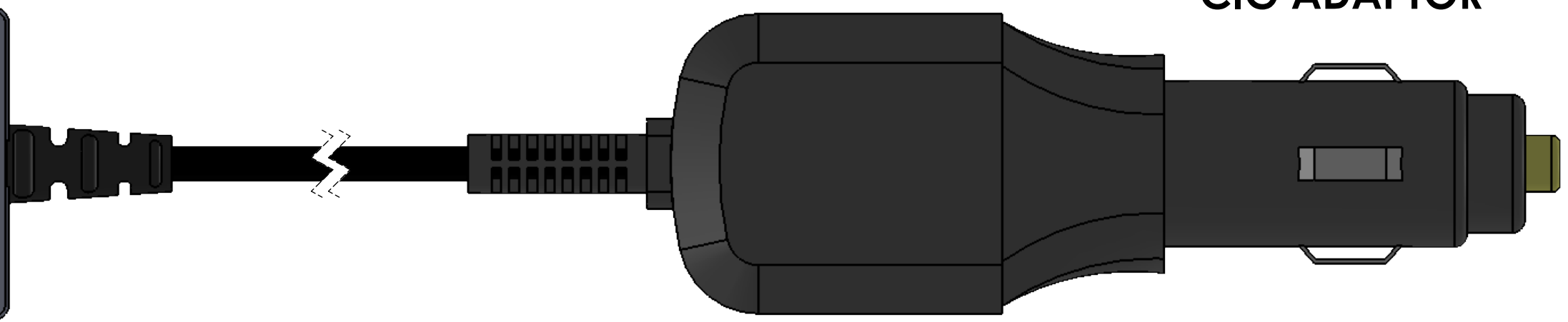
REF. NUMBER: SNO084	
SupplyNet	706 EXECUTIVE BLVD. SUITE B VALLEY COTTAGE, NY 10989
TITLE: PRC 152 TO CIG ADAPTOR WITH INTEGRATED 12V REGULATOR	
SIZE B	DWG. NO. SN-330
REV A	
SCALE: NA	WEIGHT:
SHEET 2 OF 3	

PROPRIETARY AND CONFIDENTIAL
 THE INFORMATION CONTAINED IN THIS
 DRAWING IS THE SOLE PROPERTY OF
 SUPPLYNET, INC. ANY REPRODUCTION
 IN PART OR AS A WHOLE WITHOUT THE
 WRITTEN PERMISSION OF SUPPLYNET INC.
 IS PROHIBITED.
CAGE CODE: 1HJX9

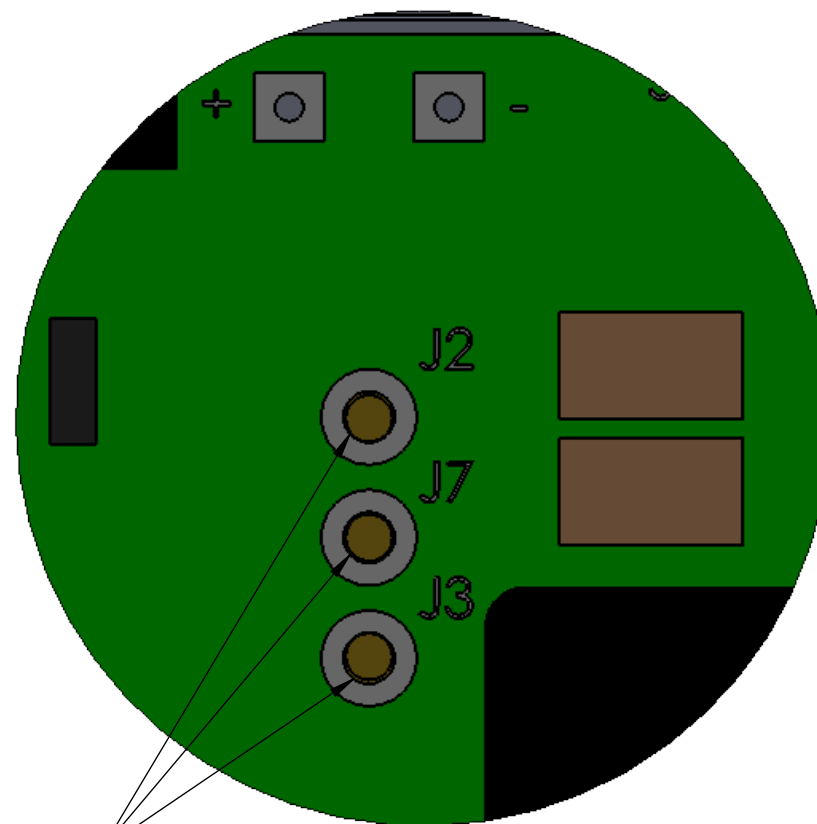
8 7 6 5 4 3 2 1



PRC-152



CIG ADAPTOR



SOLDER LOCATIONS

DETAIL A
SCALE 4 : 1

PCB INSTALLATION AND WIRING INSTRUCTIONS:

- 1) LOCATE AND INSTALL PCB AS SHOWN.
- 2) SECURE PCB TO HOUSING USING 4-40 UNC FASTENING NUTS.
- 3) WIRE PER TABLE 1. SOLDERING IAW IPC-J-STD-001.
- 4) APPLY CONFORMAL COATING TO PCB USING CONFORMAL COATING PER CRC TDS PLASTIK 70. USE EITHER SPRAY OR BRUSH METHOD. MASK OFF ALL EXTERIOR AREAS OF THE PRC 152 HOUSING. CONFORMAL COATING ON EXTERIOR IS PROHIBITED. APPLY AND CURE CONFORMAL COATING AS DESCRIBED IN PLASTIK 70 TDS.
- 5) ATTACH COVER USING THE MOUNTING SCREWS AND INDUSTRIAL ADHESIVE RX GEL (REF SN0042). CURE PER INSTRUCTIONS.

TABLE 1.		
PRC 152	WIRE COLOR	CIG ADAPTOR
-	GREEN	-
+	RED	+

REF. NUMBER: SN0084
SupplyNet 706 EXECUTIVE BLVD.
 SUITE B
 VALLEY COTTAGE, NY 10989

TITLE:
 PRC 152 TO CIG
 ADAPTOR WITH
 INTEGRATED 12V REGULATOR

SIZE DWG. NO. REV
B SN-330 **A**

PROPRIETARY AND CONFIDENTIAL
 THE INFORMATION CONTAINED IN THIS
 DRAWING IS THE SOLE PROPERTY OF
 SUPPLYNET, INC. ANY REPRODUCTION
 IN PART OR AS A WHOLE WITHOUT THE
 WRITTEN PERMISSION OF SUPPLYNET INC.
 IS PROHIBITED.

CAGE CODE: 1HJX9

SCALE: NA WEIGHT: SHEET 3 OF 3