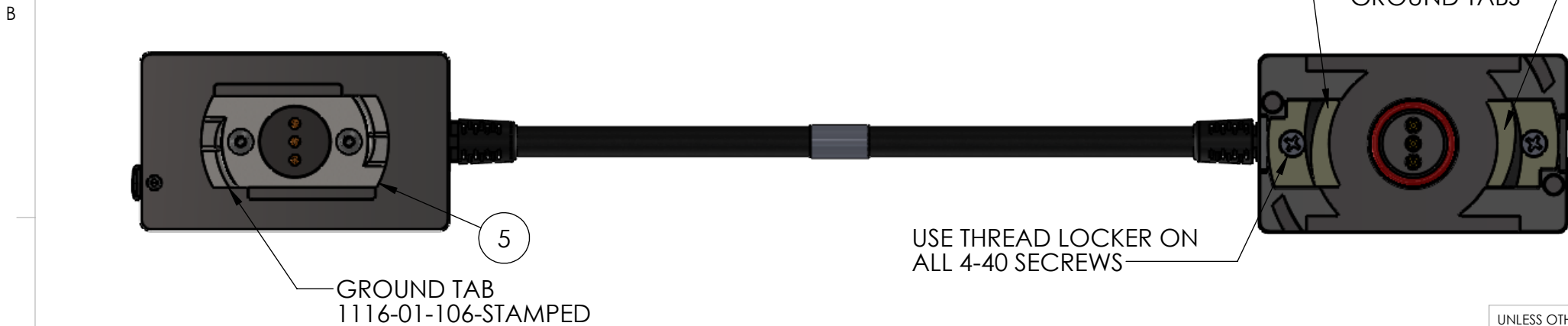
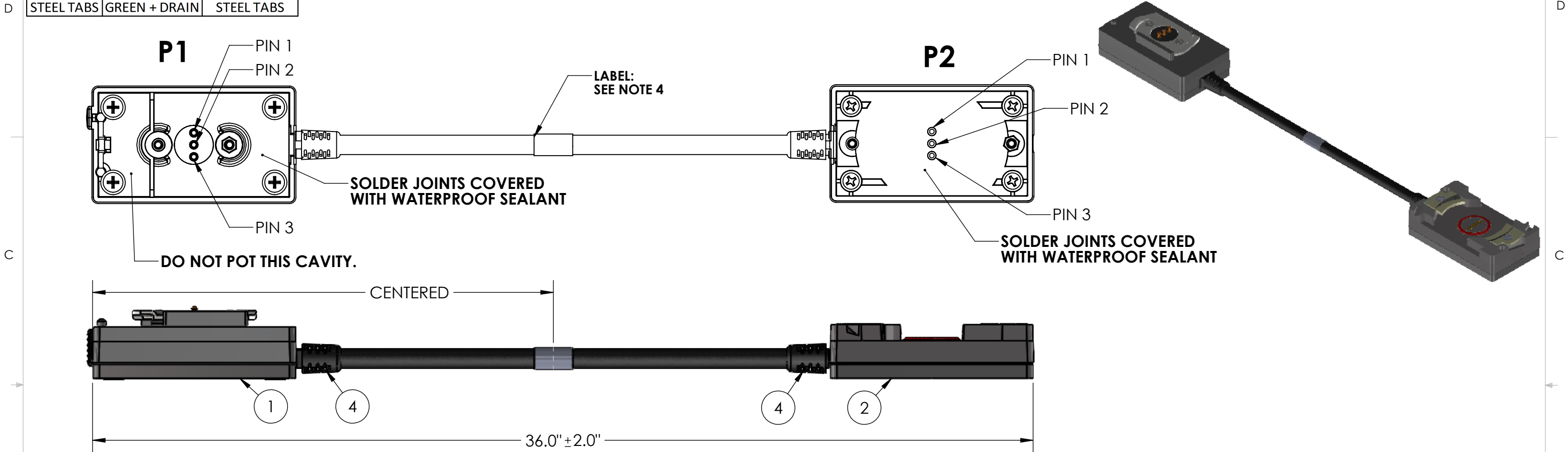


TABLE 1: WIRE RUN LIST		
P1 PRC-161	WIRE COLOR	P2 CONN-MBITR
PIN 1, 3	RED	PIN 1, 3
PIN 2	WHITE	PIN 2
STEEL TABS	GREEN + DRAIN	STEEL TABS

REVISIONS			
REV.	DESCRIPTION	DATE	ENG
B	UPDATED FORMAT & ADDED STAMPED GROUND BAR	7/6/2020	TC
C	ADDED POTTING NOTE TO P1 CONNECTOR	5/11/2022	MOB
D	CLARIFIED CONTACT SEALING NOTES	5/17/2022	MOB



BILL OF MATERIALS			
ITEM NO.	PART NUMBER	QTY	NAME/DESCRIPTION
1	SN-799-KIT	1	PRC-148/152 BATTERY ADAPTER KIT
2	CONN-MBITR-KIT	1	PRC-148/152 BATTERY ADAPTER KIT
3	223C-V03A	40"	AWG 22 3C CABLE
4	FE-502-11C	2	STRAIN RELIEF
5	1116-01-106-STAMPED	1	STAMPED STEEL GROUND TAB

- NOTES:
- WIRE FUNCTION: SEE TABLE 1 WIRE RUN LIST.
 - ASSEMBLY TO BE 100% TESTED FOR CONTINUITY, SHORTS, AND JACKET RESISTANCE.
 - SOLDERING: IAW IPC-J-STD-001 CLASS II AS APPLICABLE.
 - IDENTIFICATION: LABEL WITH THE FOLLOWING INFORMATION FOR EACH PART DELIVERED.
UOS PART MARKING ON THE WIRE IS PROHIBITED. USE ADHESIVE LABEL, WHITE WITH BLACK FONT.
PN: SN-800 REV. X (REV. "X" AS PER PO)
CAGE CODE: 1HJX9
MFD: MM/YY

UNLESS OTHERWISE SPECIFIED:			
DIMENSIONS ARE IN: INCHES			
TOLERANCES: .XX: ± 0.03			
.XXX: ± 0.005			
ANGULAR: .X°: 1°			
.XX°: 0.5°			
BREAK EDGES: .005 - .020			
FILLETS: .005 - .020			
SURFACE FINISH:			
GEOMETRIC TOLERANCING PER: ASME Y14.5 -2009			
MATERIAL: SEE DRAWING NOTES			
FINISH: SEE DRAWING NOTES			
DO NOT SCALE DRAWING			

	NAME	DATE
DRAWN	TC	7/6/20
CHECKED	RB	7/6/20
COMMENTS:		
<u>PROPRIETARY AND CONFIDENTIAL</u> THE INFORMATION CONTAINED IN THIS DRAWING IS THE SOLE PROPERTY OF SUPPLYNET, INC. ANY REPRODUCTION IN PART OR AS A WHOLE WITHOUT THE WRITTEN PERMISSION OF SUPPLYNET INC. IS PROHIBITED.		
CAGE CODE: 1HJX9		

REF. NUMBER: SN0427

SupplyNet 706 EXECUTIVE BLVD.
SUITE 8
VALLEY COTTAGE, NY 10989

TITLE:
**BATTERY EXTENDER
AN/PRC152 /AN/PRC-148**

SIZE B	DWG. NO. SN-800	REV D
SCALE: NA	WEIGHT:	SHEET 1 OF 1