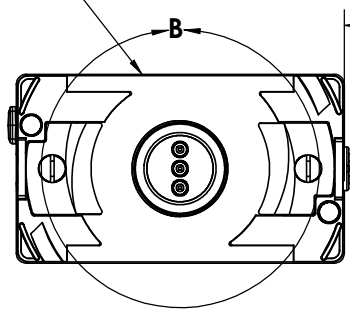
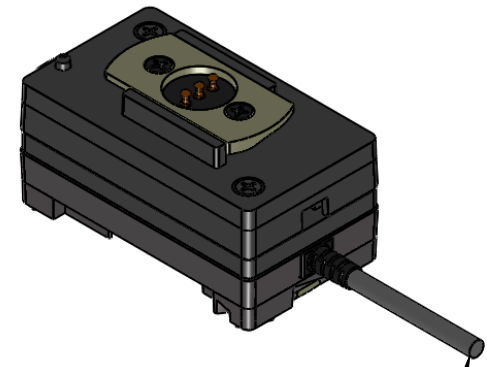


REV	DATE	DESCRIPTION OF CHANGE	ENG
3	05/15/14	PRELIMINARY	RJB

RADIO SIDE

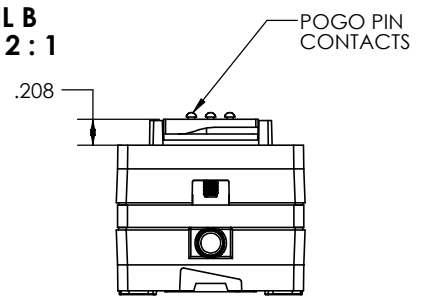


CUSTOMER DEFINED LENGTH

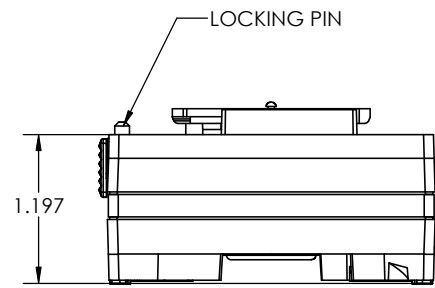


CABLE:  
RED WIRE: (+) 20 WAG  
GREEN WIRE: (-) 20 AWG

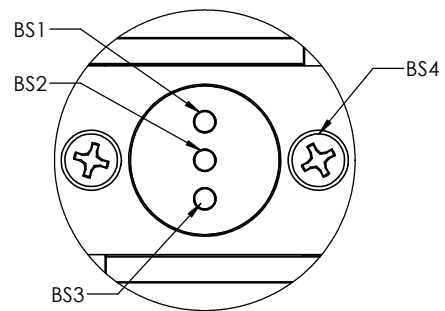
**DETAIL B**  
SCALE 2 : 1



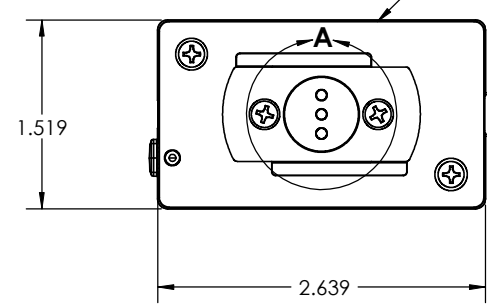
LOCKING PIN



BATTERY SIDE



**DETAIL A**  
SCALE 2 : 1

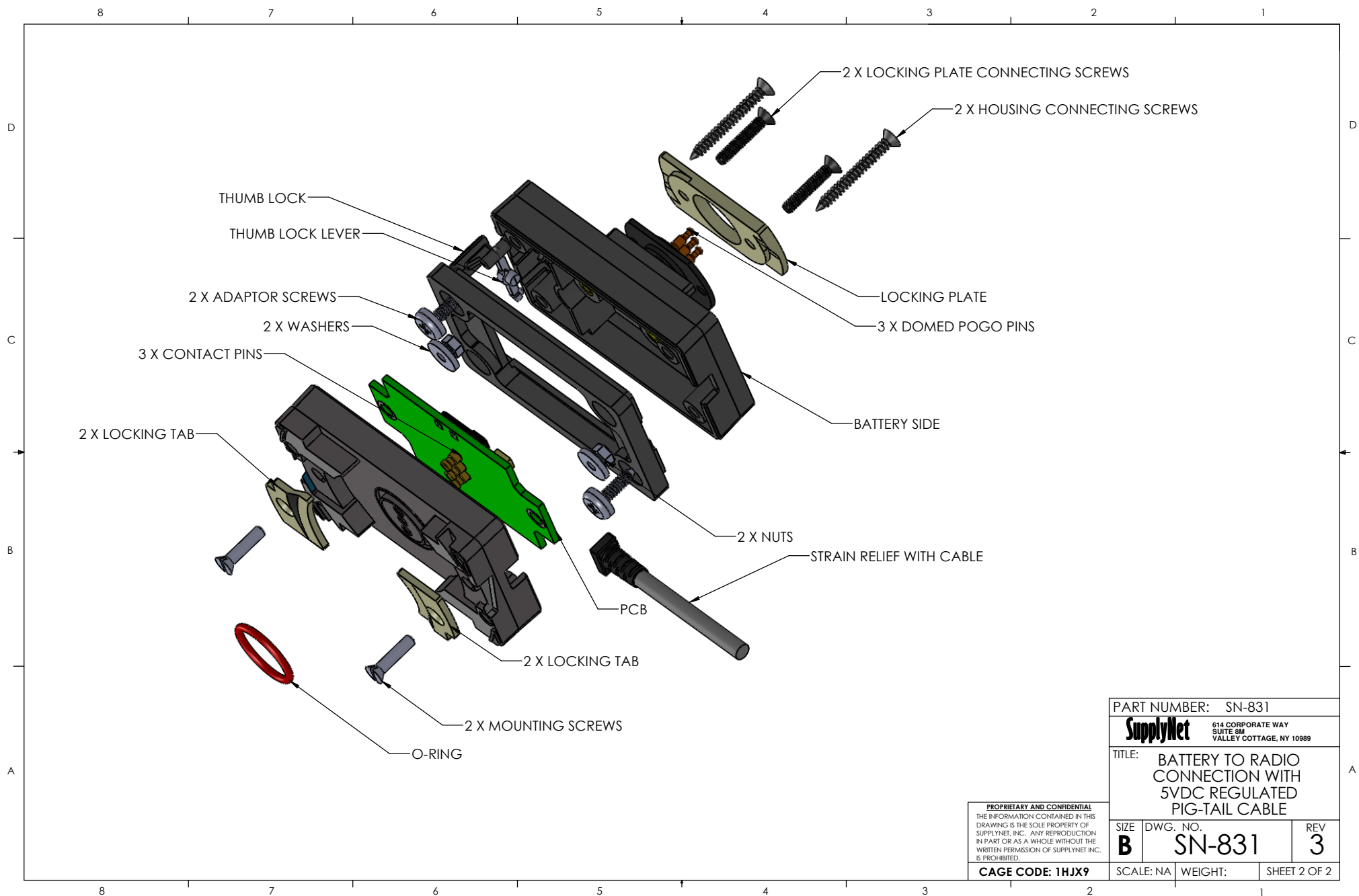


PRELIMINARY: DRAWING CONTROLLED PER ER1005

TABLE 1. WIRING			
BATTERY SIDE	RADIO SIDE	CABLE	NOTES
BS1	RS1	RED	
BS2	RS2	GREEN	
BS3	RS3	RED	
BS4	RS4 & RS5	GREEN	USE NUTS TO ATTACH WIRE TO SCREW

PART NUMBER: SN-831

UNLESS OTHERWISE SPECIFIED:		NAME	DATE	<b>SupplyNet</b> 614 CORPORATE WAY SUITE 8H VALLEY COTTAGE, NY 10989
DIMENSIONS ARE IN: INCHES		DRAWN	RJB 05/09/13	
TOLERANCES: .XX: ± 0.03		CHECKED	RJB 05/09/13	
.XXX: ± 0.005 ANGULAR: .XX°.1° .XX°: 0.5° BREAK EDGES: .005 - .020 FILLETS: .005 - .020 SURFACE FINISH:		COMMENTS:		
GEOMETRIC TOLERANCING PER: ASME Y14.5 - 2009 MATERIAL: SEE DRAWING NOTES FINISH: SEE DRAWING NOTES		PROPRIETARY AND CONFIDENTIAL THE INFORMATION CONTAINED IN THIS DRAWING IS THE SOLE PROPERTY OF SUPPLYNET, INC. ANY REPRODUCTION IN PART OR AS A WHOLE WITHOUT THE WRITTEN PERMISSION OF SUPPLYNET INC. IS PROHIBITED.		TITLE: BATTERY TO RADIO CONNECTION WITH 5VDC REGULATED PIG-TAIL CABLE SIZE <b>B</b> DWG. NO. <b>SN-831</b> REV <b>3</b>
DO NOT SCALE DRAWING		CAGE CODE: 1HJX9		SCALE: NA WEIGHT: SHEET 1 OF 2



**PROPRIETARY AND CONFIDENTIAL**  
 THE INFORMATION CONTAINED IN THIS  
 DRAWING IS THE SOLE PROPERTY OF  
 SUPPLYNET, INC. ANY REPRODUCTION  
 IN PART OR AS A WHOLE WITHOUT THE  
 WRITTEN PERMISSION OF SUPPLYNET INC.  
 IS PROHIBITED.

PART NUMBER: SN-831			
<b>SupplyNet</b> 614 CORPORATE WAY SUITE 8M VALLEY COTTAGE, NY 10989			
TITLE: BATTERY TO RADIO CONNECTION WITH 5VDC REGULATED PIG-TAIL CABLE			
SIZE <b>B</b>	DWG. NO. <b>SN-831</b>	REV <b>3</b>	
CAGE CODE: 1HJX9	SCALE: NA	WEIGHT:	SHEET 2 OF 2