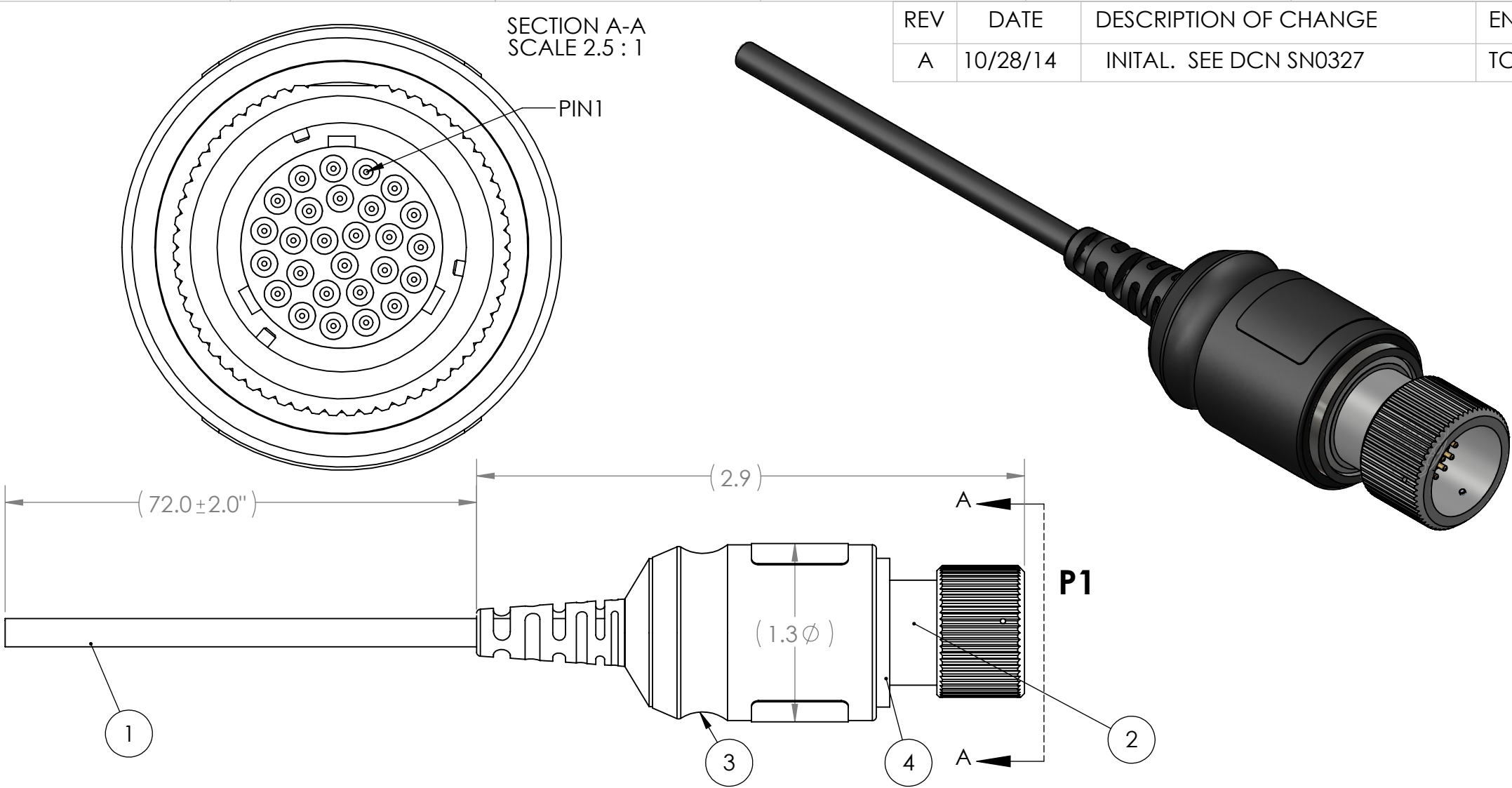


TABLE 1. WIRE RUN LIST			
P1 PINS	WIRE COLORS	P1 PINS	WIRE COLORS
ELEMENT 1: PRIMARY			
1	BLACK	14	WHITE/BLACK
2	BROWN	15	BLACK/WHITE
3	RED	16	BROWN/WHITE
4	DARK ORANGE/BLACK	17	RED/WHITE
5	YELLOW	18	RED/BLACK
6	LIGHT GREEN/WHITE	19	YELLOW/WHITE
7	BLUE	20	YELLOW/BLACK
8	VIOLET	21	VIOLET/WHITE
9	GRAY	22	GRAY/WHITE
10	DARK BLUE/BLACK	23	TAN/WHITE
11	TAN	24	TAN/BLACK
12	LIGHT BLUE/WHITE	25	PINK/WHITE
13	PINK	26	PINK/BLACK
ELEMENT 2: UNSHEILDDED TWISTED PAIR			
		27	ORANGE
TINNED COPPER DRAIN WIRE			



REV	DATE	DESCRIPTION OF CHANGE	ENG
A	10/28/14	INITAL. SEE DCN SN0327	TC

- NOTES:
- CABLE: 26 AWG, 32 CONDUCTOR,OD: 0.350 NOMINAL. POLYURETHANE INSULATION.
 - OVERMOLD MATERIAL: 90A POLYETHER-TYPE THERMOPLASTIC POLYURETHANE (TPU).
 - JACKET: BLACK MATTE FINISH.
 - SOLDERING IAW IPC-J-STD-001CLASS II AS APPLICABLE.
 - CABLE ASSEMBLIES TO BE 100% TESTED FOR CONTINUITY, SHORTS AND INSULATION RESISTANCE (250V @20MOHM MINIMUM)
 - IDENTIFICATION: BAG AND INDENTIFY ON PACKAGING THE FOLLOWING INFORMATION FOR EACH PART DELIVERED. UOS PART MARKING ON THE WIRE IS PROHIBITED:
PN: SN-922-ALL REV X (REV MARKING PER PO)
CAGE CODE: 1HJX9
DATE OF MFGR: MM/YY
 - WIRING FUNCTION AND PIN LOCATION: SEE TABLE 1.
 - REFERENCE SUPPLYNET FILE NUMBER SN0327.
 - MANUFACTURE AND INSPECT IAW IPC/WHMA A-620 CLASS 2.
 - COVER SOLDERED CONNECTIONS WITH SHRINK TUBING.
 - FILL SOLDERED CAVITIES WITH ITEM 6. CURE PER MANUFACTURES INSTRUCTIONS.
 - ROHS COMPLIANT.
 - ITEM 1 BRAIDED SHIELD TO BE UNIFORMLY BANDED(ITEM 5) AROUND BACKSHELL
 - CAP AND STOW ALL UNUSED WIRES.

BILL OF MATERIALS				
ITEM NO.	PART NUMBER	QTY	NAME	COMMENTS
1	51367	74"	CABLE	32C CABLE
2	MC2127	1	CONNECTOR	SUPPLYNET
3	TBD	1	OVERMOLD	90A POLYETHER-TYPE THERMOPLASTIC
4	1121215	1	ADAPTOR	15/16-20 UNEF. EN ALUMINUM
5	BE-04	1	BANDING CLAMP	MICRO BAND FLAT CONFIGURATION

UNLESS OTHERWISE SPECIFIED:		NAME	DATE							
DIMENSIONS ARE IN: INCHES		DRAWN	TC	10/28/14	TITLE: <div>PRC-117F UNTERMINATED</div>					
TOLERANCES: .XX: ± 0.03		CHECKED	RJB	10/28/14						
ANGULAR: .X°: 1°		COMMENTS:								
.XX°: 0.5°										
BREAK EDGES: .005 - .020		<div>PROPRIETARY AND CONFIDENTIAL</div> <div>THE INFORMATION CONTAINED IN THIS DRAWING IS THE SOLE PROPERTY OF SUPPLYNET, INC. ANY REPRODUCTION IN PART OR AS A WHOLE WITHOUT THE WRITTEN PERMISSION OF SUPPLYNET INC. IS PROHIBITED.</div>			SIZE <div>B</div>	DWG. NO. <div>SN-922-ALL</div>	REV <div>A</div>			
FILLETS: .005 - .020										
SURFACE FINISH:					<div>CAGE CODE: 1HJX9</div>			SCALE: NA	WEIGHT:	SHEET 1 OF 1
GEOMETRIC TOLERANCING PER: ASME Y14.5 -2009										
MATERIAL: SEE DRAWING NOTES										
FINISH: SEE DRAWING NOTES										
DO NOT SCALE DRAWING										