

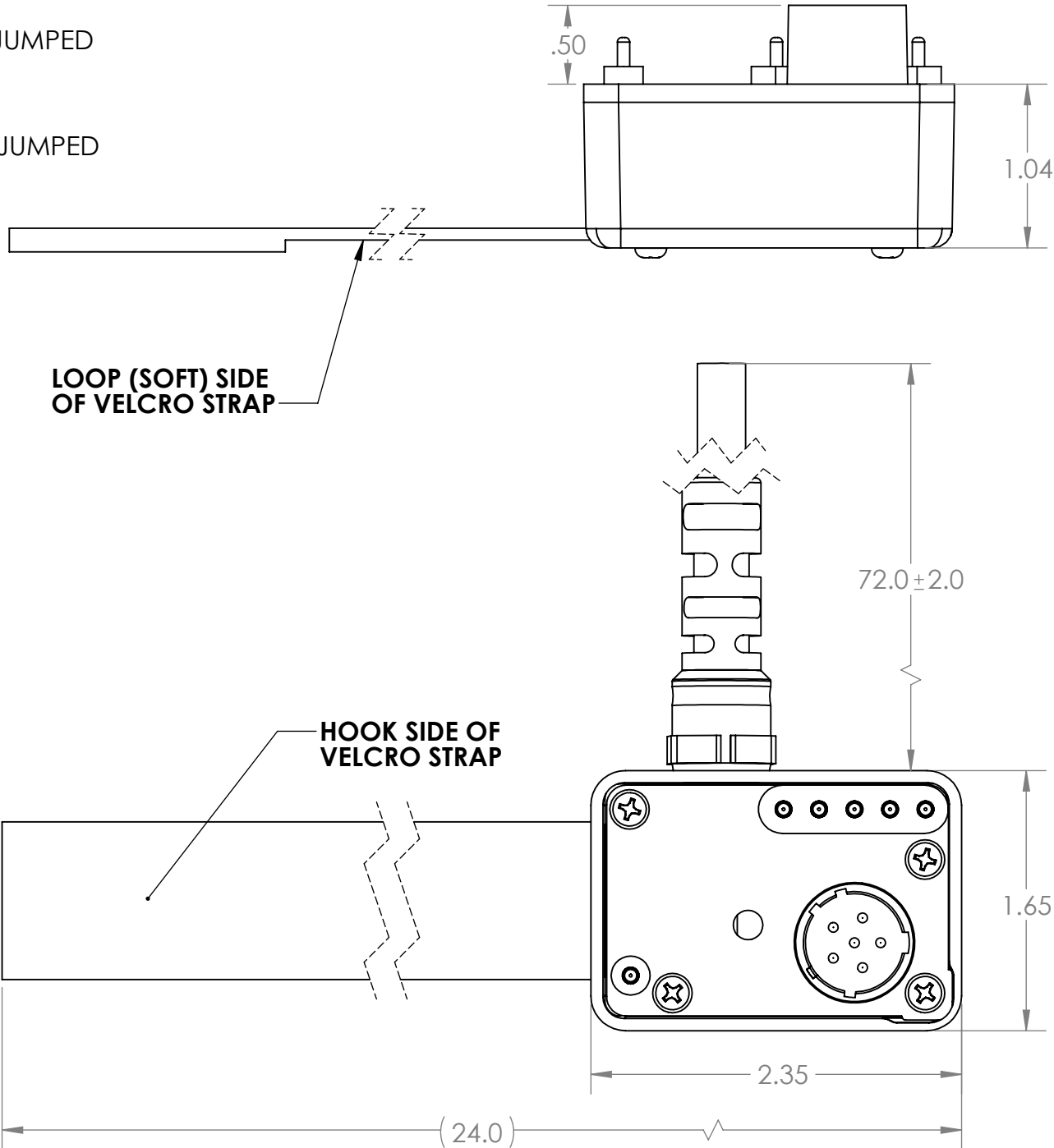
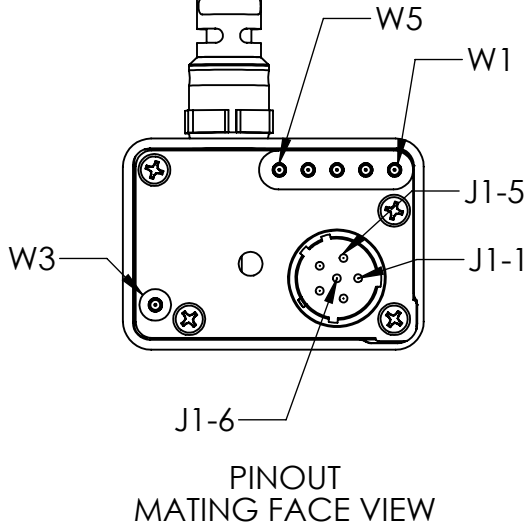
TABEL 1. WIRE RUN LIST			
LOCATION	WIRE GAGE	WIRE COLOR	CONN PIN
E1	AWG 16	BLACK	J1-1
E2	AWG 16	BLACK / WHITE	J1-2
E3	AWG 16	NC	
E4	AWG 16	RED	J1-4
E5	AWG 16	RED / WHITE	J1-5
E6	AWG 22	BROWN	W1
E7	AWG 22	ORANGE	W2
E8	AWG 22	YELLOW	W3
E9	AWG 22	VIOLET	W4
E10	AWG 22	GRAY	W5
E11	AWG 22	BLUE	J1-6

JUMPED

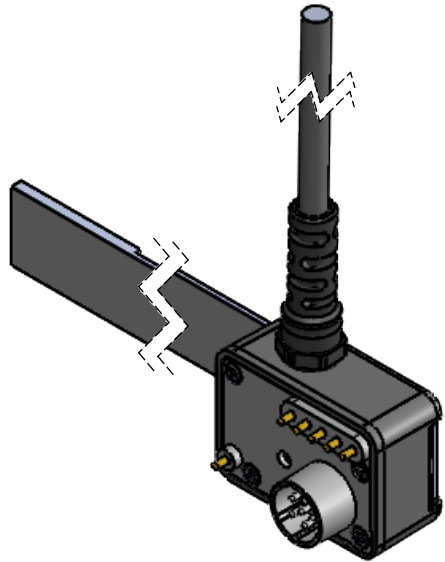
JUMPED

LOOP (SOFT) SIDE
OF VELCRO STRAP

HOOK SIDE OF
VELCRO STRAP



REV	DATE	DESCRIPTION OF CHANGE	ENG
C	11/19/21	ADDED PINOUT	MM



BILL OF MATERIALS			
ITEM NO.	PART NUMBER	QTY.	DESCRIPTION
1	SN-404-10C2-12	0.5	DOUBLE ENDED CABLE W/OVERMOLDED THREADED STRAIN RELIEF
2	SN0017-3-A	1	CONNECTOR ASSY.
3	SN0008-1	1	PCB (CONFORMAL COATED)
4	SN0009-1	6	POGO PIN
5	SN0010-THREADED	1	ENCLOSURE (WITH THREADS)
6	90033A188	4	SCREW (#4 3/4" LENGTH)
7	SN0013	1	VELCRO STRAP
8	99461A120	2	SCREW (4-40, 3/8" LENGTH)
9	SN0015	2	WASHER (0.125 ID, 0.312 OD)
10	SN0018	6	POGO PIN CAPS

NOTES:

- SOLDERING IAW IPC-J-STD-001 CLASS II AS APPLICABLE.
- CABLE ASSEMBLIES TO BE TESTED 100% FOR CONTINUITY, SHORTS, AND INSULATION RESISTANCE (150 VDC @ 100MOHM MINIMUM).
- IDENTIFICATION: BAG AND IDENTIFY ON THE PACKAGING THE FOLLOWING INFORMATION FOR EACH PART DELIVERED.
PN: CONN-BB2590SMBUS REV X (REV MARKING PER PO)
CAGE CODE: 1HJX9
DATE OF MFRG: MM/YY
- MANUFACTURE AND INSPECT IAW IPC/WHMA A-620 CLASS 2.
- PCB MUST BE CONFORMAL COATED.

UNLESS OTHERWISE SPECIFIED:
DIMENSIONS ARE IN: INCHES
TOLERANCES: .XX: ± 0.03
.XXX: ± 0.005
ANGULAR: .X°: 1°
.XX°: 0.5°
BREAK EDGES: .005 - .020
FILLETS: .005 - .020
SURFACE FINISH:

GEOMETRIC TOLERANCING
PER: ASME Y14.5 -2009

MATERIAL: SEE DRAWING NOTES
FINISH: SEE DRAWING NOTES

DO NOT SCALE DRAWING

DRAWN: RJB 05/05/14
CHECKED: RJB 05/05/14
COMMENTS:

PROPRIETARY AND CONFIDENTIAL
THE INFORMATION CONTAINED IN THIS
DRAWING IS THE SOLE PROPERTY OF
SUPPLYNET, INC. ANY REPRODUCTION
IN PART OR AS A WHOLE WITHOUT THE
WRITTEN PERMISSION OF SUPPLYNET INC.
IS PROHIBITED.

CAGE CODE: 1HJX9

REF. NUMBER: SN0019

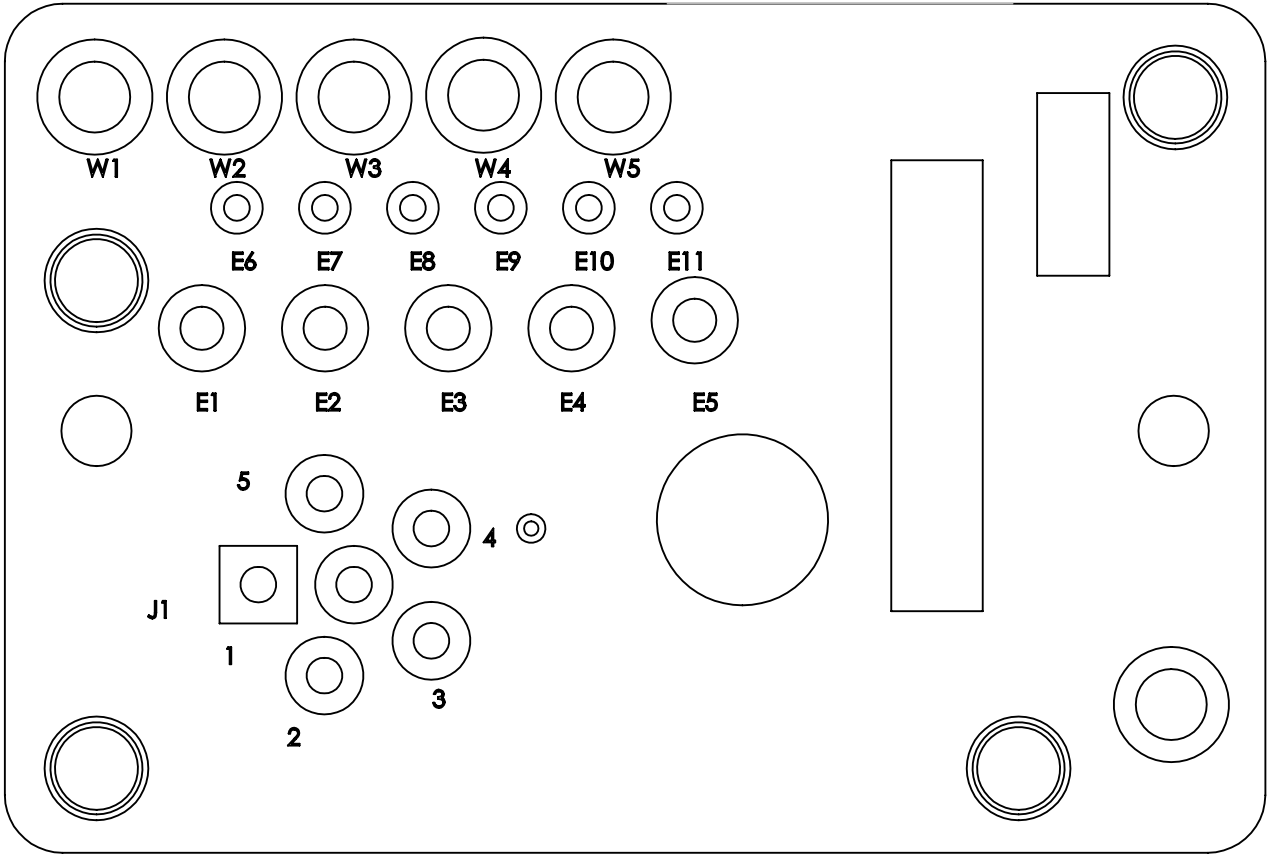
SupplyNet

706 EXECUTIVE BLVD.
SUITE B
VALLEY COTTAGE, NY 10989

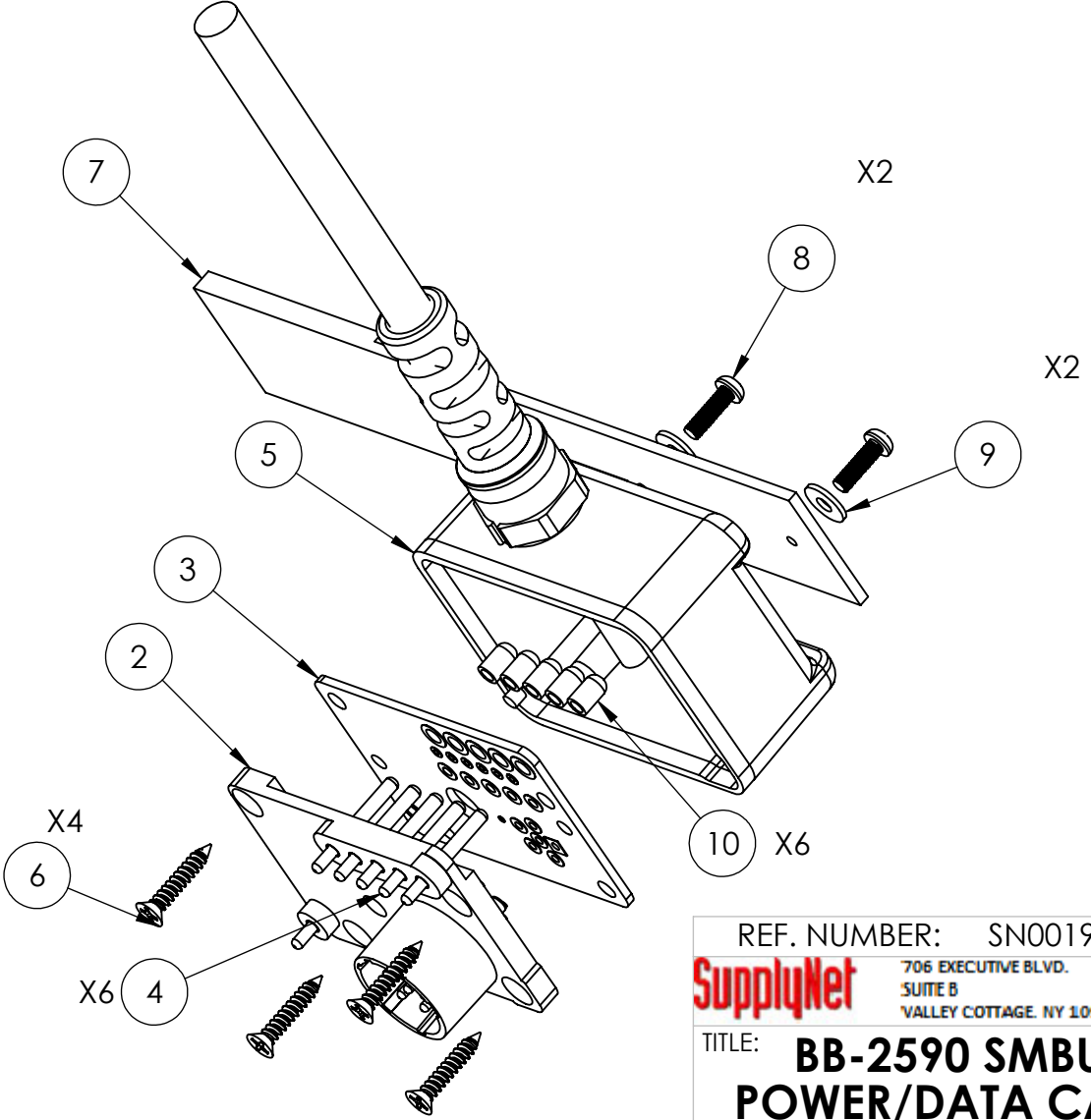
**12V BB-2590 SMBUS
POWER/DATA CABLE
(ALL PINS WIRED)**

SIZE: **B** DWG. NO.: CONN-BB2590SMBUS-C4 REV: **C**
SCALE: NA WEIGHT: SHEET 1 OF 2

PCB DIAGRAM



EXPLODED VIEW



ASSEMBLY NOTES:

1. APPLY CYANOACRYLATE TO THREADS OF ITEM #1 (CABLE) TO SECURE TO ITEM #5 (ENCLOSURE).

PROPRIETARY AND CONFIDENTIAL
THE INFORMATION CONTAINED IN THIS
DRAWING IS THE SOLE PROPERTY OF
SUPPLYNET, INC. ANY REPRODUCTION
IN PART OR AS A WHOLE WITHOUT THE
WRITTEN PERMISSION OF SUPPLYNET INC.
IS PROHIBITED.
CAGE CODE: 1HJX9

REF. NUMBER: SN0019		
SupplyNet 706 EXECUTIVE BLVD. SUITE B VALLEY COTTAGE, NY 10989		
TITLE: BB-2590 SMBUS POWER/DATA CABLE (ALL PINS WIRED)		
SIZE B	DWG. NO. CONN-BB2590SMBUS	REV C
SCALE: NA	WEIGHT:	SHEET 2 OF 2