


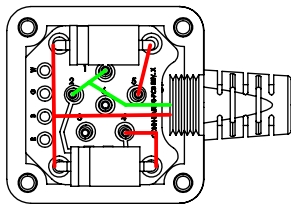
TABLE 1: WIRE RUN LIST	
PIN	WIRE COLORS
4, 5  (X2)	RED
1, 2	GREEN

TABLE 2: WIRE LENGTH CHART		
PART NUMBER & PART MARKING	"-XX" DIMENSION (INCHES)	TOLERANCE (INCHES)
191004E-01	12	+1.0", -0.0"
191004E-02	24	+2.0", -0.0"
191004E-03	36	+2.0", -0.0"
191004E-04	48	+2.0", -0.0"
191004E-05	60	+2.0", -0.0"
191004E-06	72	+4.0", -0.0"
191004E-08	96	+4.0", -0.0"
191004E-10	120	+4.0", -0.0"
191004E-12	144	+6.0", -0.0"
191004E-15	180	+6.0", -0.0"
191004E-20	240	+6.0", -0.0"

*2 DIODES USED,
1 ON PIN 4 AND
1 ON PIN 5.

WIRING DIAGRAM



REVISIONS			
REV.	DESCRIPTION	DATE	ENG
H	ADDED WIRING DIAGRAM, CLARIFIED NUMBER OF DIODES USED	1/20/21	MOB
J	CAHNGED ITEM NO. 1 PN, ADDED HI-POT NOTES	3/29/22	MOB
K	UPDATED BOM & NOTES	6/2/23	DR

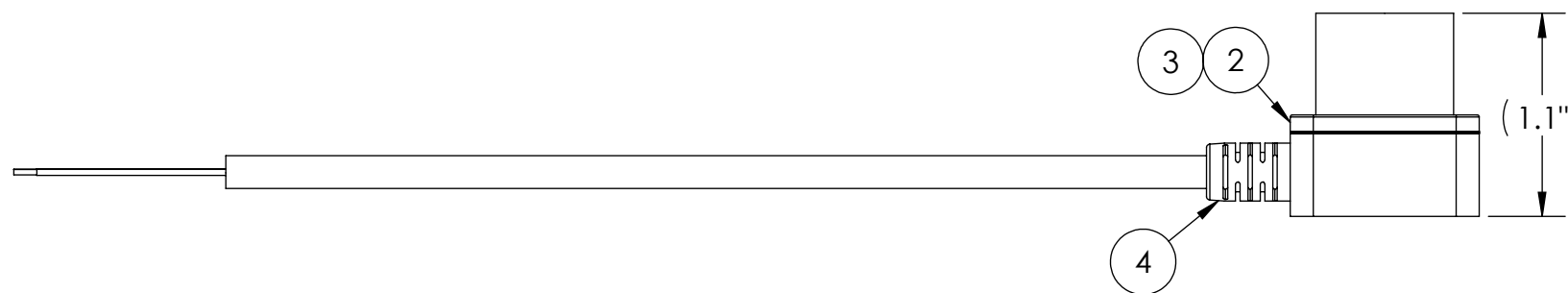
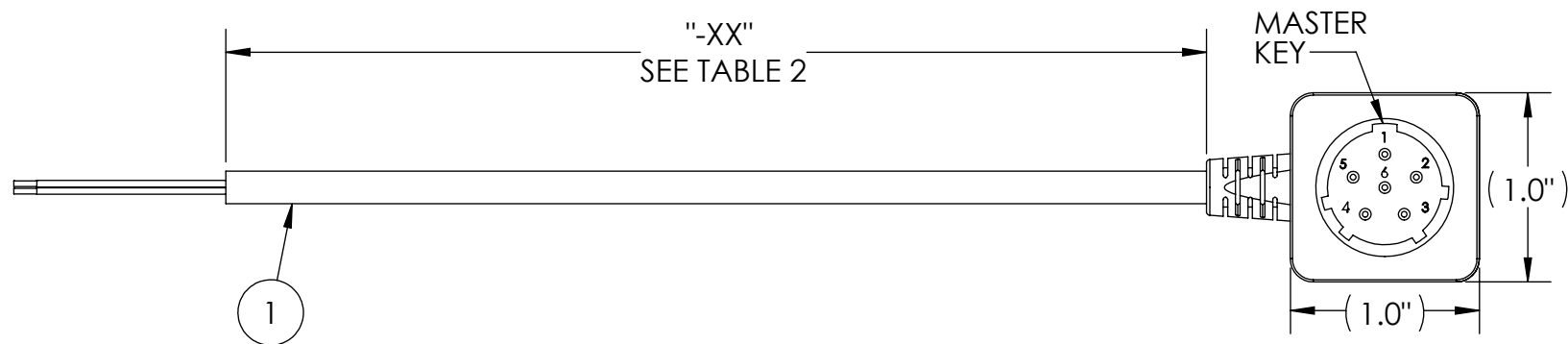




TABLE 2: BILL OF MATERIALS			
ITEM NO.	PART NO	QTY	NAME/DESCRIPTION
1	202C-U07A	XX	CABLE, 2C, AWG 20, PU JACKET, 4.6MM OD
2	CONN-BA5590-MT	1	Male BA5590 with Threaded Backshell
3	SBM1060LSS_AY_00001	2	DIODE SCHOTTKY, 60V, 10A
4	SR:0024	1	THREADED STRAIN RELIEF

NOTES:

1. WIRING SHALL BE DONE IN ACCORDANCE WITH TABLE 1 WIRE RUN LIST.
2. PACKAGING: EACH COMPLETED ASSEMBLY SHALL BE PLACED INTO A ZIP-POLY BAG AND MARKED PER SN-STD-LBL.
2. SOLDERING: IAW IPC-J-STD-001 CLASS 2 AS APPLICABLE
3. ASSEMBLY TO BE 100% TESTED FOR SHORTS, CONTINUITY, AND JACKET RESISTANCE (250V @ 100MOHM MIN.)
4. MANUFACTURE AND INSPECT IAW IPC/WHMA A-620 CLASS 2.

UNLESS OTHERWISE SPECIFIED:		NAME		DATE							
DIMENSIONS ARE IN: INCHES		DRAWN	LS	3/29/2019		TITLE: BA5590 MALE BATTERY CONNECTOR WITH POLYURETHANE JACKET, 12V WITH DIODES, VARIABLE LENGTH					
TOLERANCES: .XX: ± 0.03 .XXX: ± 0.005		CHECKED	RB	3/29/2019							
ANGULAR: .X°: 1° .XX°: 0.5°		COMMENTS:									
BREAK EDGES: .005 - .020 FILLETS: .005 - .020 SUFACE FINISH:											
GEOMETRIC TOLERANCING PER: ASME Y14.5-2009		<u>PROPRIETARY AND CONFIDENTIAL</u> THE INFORMATION CONTAINED IN THIS DRAWING IS THE SOLE PROPERTY OF SUPPLYNET, INC. ANY REPRODUCTION IN PART OR AS A WHOLE WITHOUT THE WRITTEN PERMISSION OF SUPPLYNET INC. IS PROHIBITED.				SIZE		DWG. NO.		REV	
MATERIAL: SEE DRAWING NOTES						B		191004E-XX		K	
FINISH: SEE DRAWING NOTES						CAGE CODE: 1HJX9				SCALE: NA	
DO NOT SCALE DRAWING											

REF. NUMBER: SN0617

SupplyNet | DESIGN
ENGINEERING
MANUFACTURING

TITLE: **BA5590 MALE BATTERY
CONNECTOR WITH
POLYURETHANE JACKET, 12V
WITH DIODES, VARIABLE LENGTH**

SIZE B	DWG. NO. 191004E-XX	REV K
------------------	-------------------------------	-----------------

SCALE: NA	WEIGHT:	SHEET 1 OF 2
-----------	---------	--------------

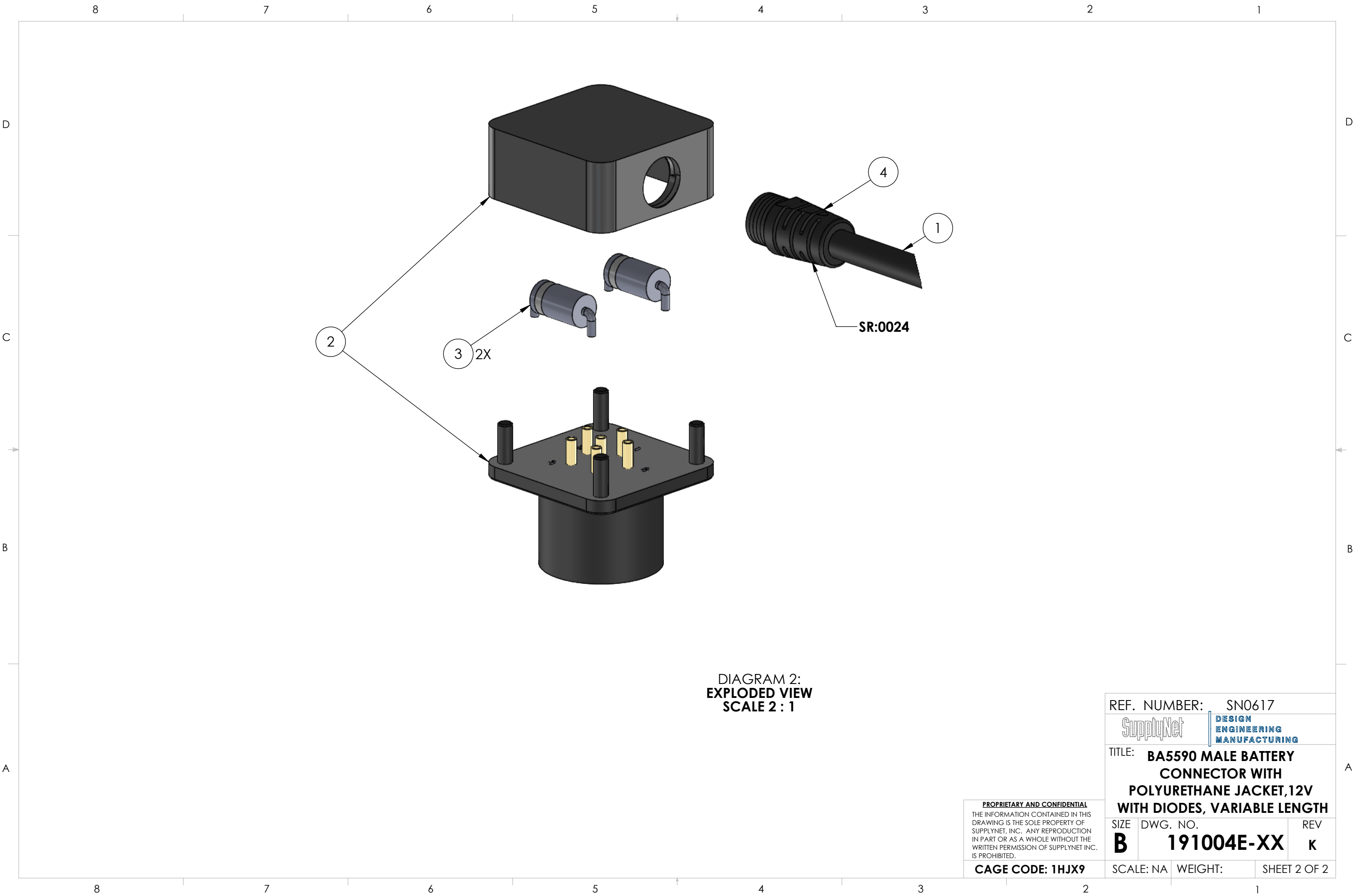


DIAGRAM 2:
EXPLODED VIEW
SCALE 2 : 1

PROPRIETARY AND CONFIDENTIAL
THE INFORMATION CONTAINED IN THIS
DRAWING IS THE SOLE PROPERTY OF
SUPPLYNET, INC. ANY REPRODUCTION
IN PART OR AS A WHOLE WITHOUT THE
WRITTEN PERMISSION OF SUPPLYNET INC.
IS PROHIBITED.

CAGE CODE: 1HJX9

REF. NUMBER:		SN0617	
SupplyNet		DESIGN ENGINEERING MANUFACTURING	
TITLE: BA5590 MALE BATTERY CONNECTOR WITH POLYURETHANE JACKET,12V WITH DIODES, VARIABLE LENGTH			
SIZE	DWG. NO.		REV
B	191004E-XX		K
SCALE: NA		WEIGHT:	SHEET 2 OF 2