

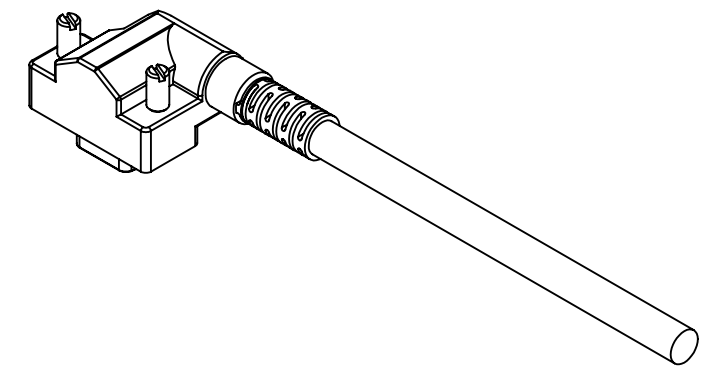
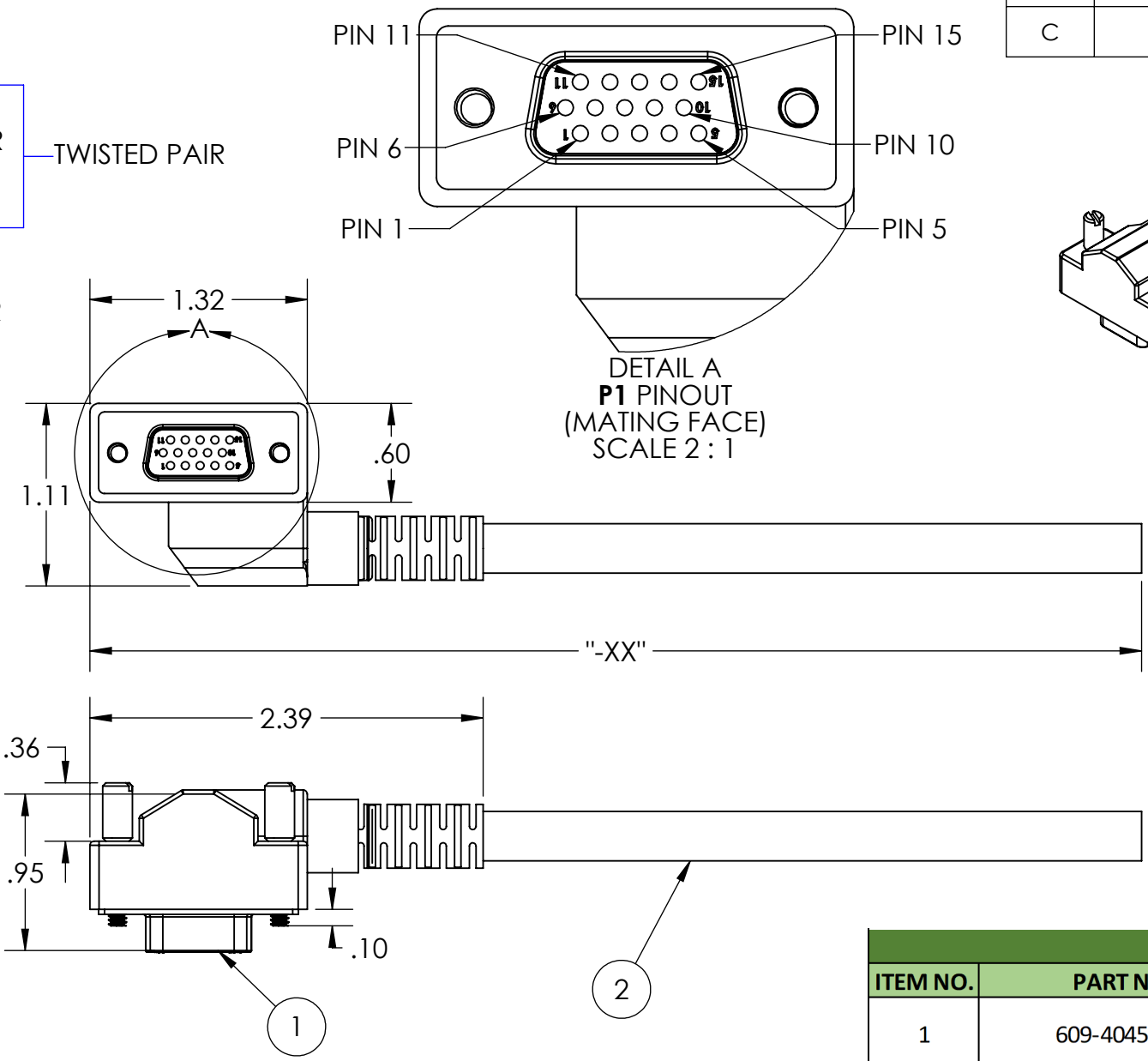
TABLE 1: WIRE RUN LIST		
P1 HD15	WIRE COLOR	SIGNAL
1	RED COAX	1PPS_IN
2	RED COAX SHIELD	1PPS_IN_RTN
3	BROWN	GND
4	YELLOW	COM2_XMTB
5	YELLOW/BLACK	COM2_XMTA
6	BLUE COAX	PPS_OUT_COM1
7	BROWN/WHITE	HQ_TXM
8	YELLOW	EXT_ONF
9	BLACK	COM2_RCVB
10	BLACK/WHITE	COM2_RCVA
11	BLUE COAX SHIELD	PPS_OUT_RTN
12	BROWN	RESERVED
13	ORANGE	RESERVED
14	BLACK	COM1_XMT
15	RED	COM1_RCV
SHELL	SHIELD	

REVISIONS			
REV.	DESCRIPTION	DATE	ENG
A	INITIAL REV.	1/27/2021	MOB
B	P1-5 WIRE COLOR CHANGED TO YELLOW/BLACK	3/16/2022	MOB
C	UPDATE PIN 5 WIRE COLOR	9/19/2023	MOB

*JUMP PINS 3 AND 13.
*PIN 5 WIRE COLOR MAY BE YELLOW/BLACK OR YELLOW/WHITE

TABLE 2: WIRE LENGTH TABLE		
"-XX" FROM P/N	"XX" DIMENSION (FT.)	TOLERANCE (IN.)
01	1	+1.0/ -0.0
02	2	+2.0/ -0.0
03	3	+2.0/ -0.0
04	4	+2.0/ -0.0
05	5	+2.0/ -0.0
06	6	+4.0/ -0.0
10	10	+4.0/ -0.0
12	12	+6.0/ -0.0
15	15	+6.0/ -0.0
16	16	+6.0/ -0.0
20	20	+6.0/ -0.0

- NOTES:
- WIRE FUNCTION: SEE TABLE 1 WIRE RUN LIST.
 - CABLE LENGTH: SEE TABLE 2 WIRE LENGTH TABLE, "-XX" PER PO.
 - ASSEMBLY TO BE 100% TESTED FOR CONTINUITY, SHORTS, AND JACKET RESISTANCE.
 - SOLDERING: IAW IPC-J-STD-001 CLASS II AS APPLICABLE.
 - IDENTIFICATION: BAG AND IDENTIFY ON PACKAGING THE FOLLOWING INFORMATION FOR EACH PART DELIVERED. PART MARKING ON THE WIRE IS PROHIBITED.
PN: SN-C7006B0092-XX REV. X ("-XX" & REV. "X" AS PER PO.)
CAGE CODE: 1HJX9
MFD: MM/YY
 - REFERENCE SUPPLYNET FILE NUMBER SN0783.
 - MANUFACTURE AND INSPECT IAW IPC/WHMA A-620 CLASS 2.



BILL OF MATERIALS			
ITEM NO.	PART NO.	QTY	NAME/DESCRIPTION
1	609-4045-ND	1	HD15F W/ OVER-MOLD
2	C13C3E28BRD/20233	AR	CABLE: 13C, 3 TWISTED PAIRS, 2 50 OHM COAX, 28 AWG, TPU JACKET, SHIELDED, OD: 0.3in

UNLESS OTHERWISE SPECIFIED:	NAME	DATE	REF. NUMBER: SN0783
DIMENSIONS ARE IN: INCHES	DRAWN	MOB	1/27/2021
TOLERANCES: .XX: ± 0.03	CHECKED	RB	1/27/2021
.XXX: ± 0.005	COMMENTS:		
ANGULAR: .X°: 1°			
.XX°: 0.5°			
BREAK EDGES: .005 - .020			
FILLETS: .005 - .020			
SURFACE FINISH:			
GEOMETRIC TOLERANCING PER: ASME Y14.5-2009	<p>PROPRIETARY AND CONFIDENTIAL</p> <p>THE INFORMATION CONTAINED IN THIS DRAWING IS THE SOLE PROPERTY OF SUPPLYNET, INC. ANY REPRODUCTION IN PART OR AS A WHOLE WITHOUT THE WRITTEN PERMISSION OF SUPPLYNET INC. IS PROHIBITED.</p>		
MATERIAL: SEE DRAWING NOTES	SIZE	DWG. NO.	REV
FINISH: SEE DRAWING NOTES	B	SN-C7006B0092-XX	C
DO NOT SCALE DRAWING	CAGE CODE: 1HJX9	SCALE: NA	WEIGHT: SHEET 1 OF 1