

TABLE 1: WIRE RUN		
P1	WIRE COLOR	P2
1, 3	RED	INPUT 10-36VDC
GND TABS	GREEN, DRAIN	INPUT GND

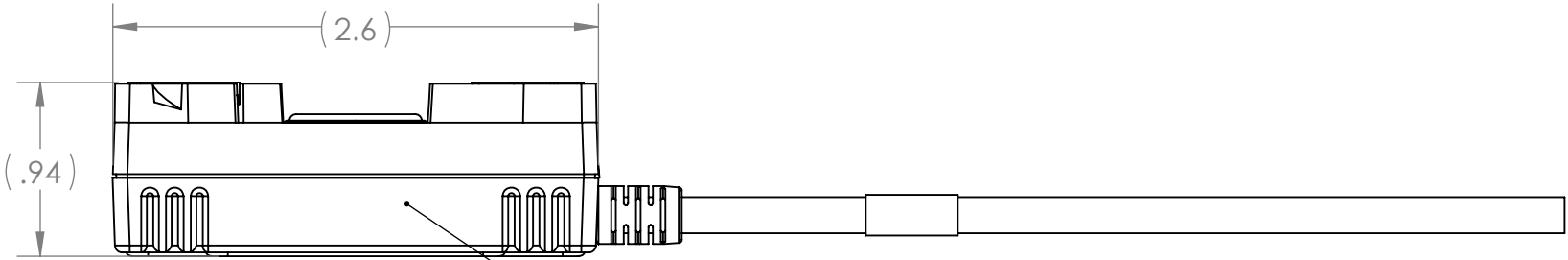
SPECIFICATIONS:

1. INPUT: 10-36VDC
2. OUTPUT VOLTAGE: 12VDC REGULATED
3. OUTPUT CURRENT: 8.5A CONTINUOUS
4. TEMPERATURE RATING: -40C TO +85C

MATERIAL SPECIFICATIONS:

1. PLASTIC: ABS
2. CONTACTS: GOLD PLATED BRASS
3. SN-12VPCB-4 PADS: TIN PALTED COPPER
4. GROUND TABS: STAINLESS STEEL

REVISIONS			
REV.	DESCRIPTION	DATE	ENG
J	REMOVED POTTING NOTES, ADDED RTV NOTES	08/03/22	MOB
K	REDRAWN WITH CHANGE: CHANGED TO SN-12VPCB-4, ADDED DEEP COVER	9/15/2022	MOB



COVER ALL COMPONENTS ON
SN-12VPCB-4 WITH RTV

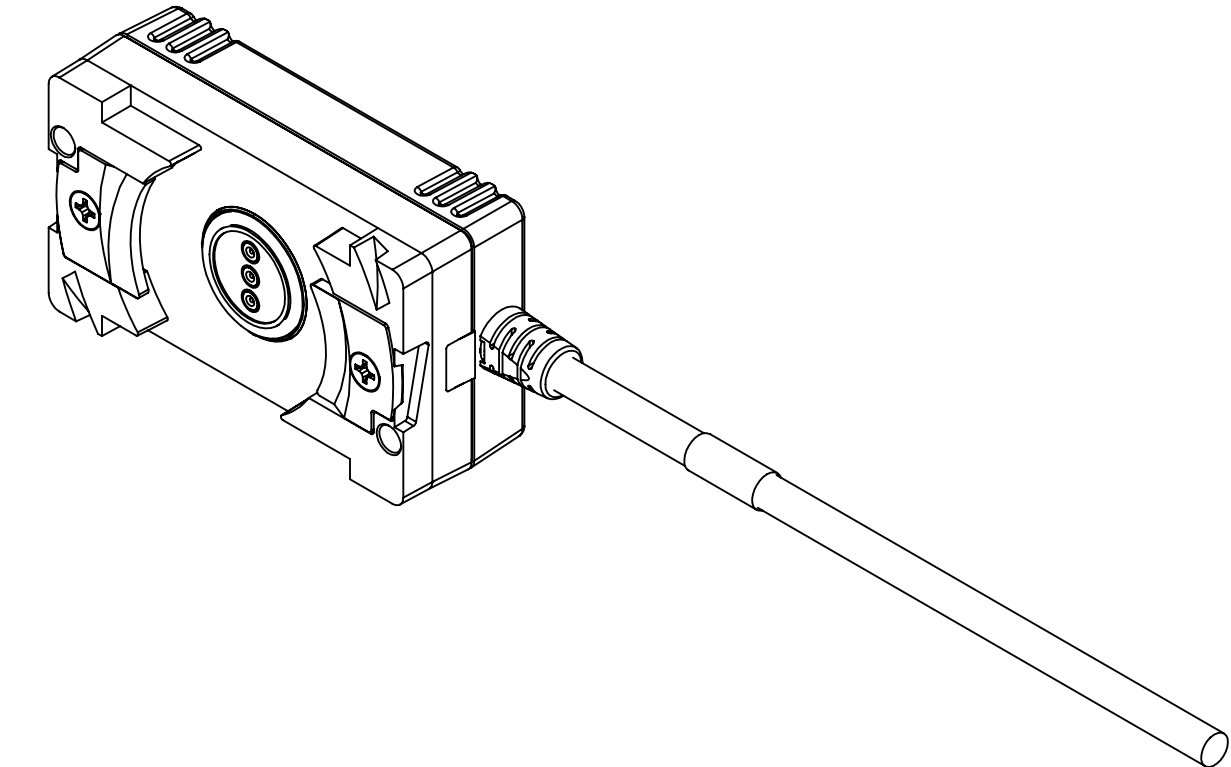
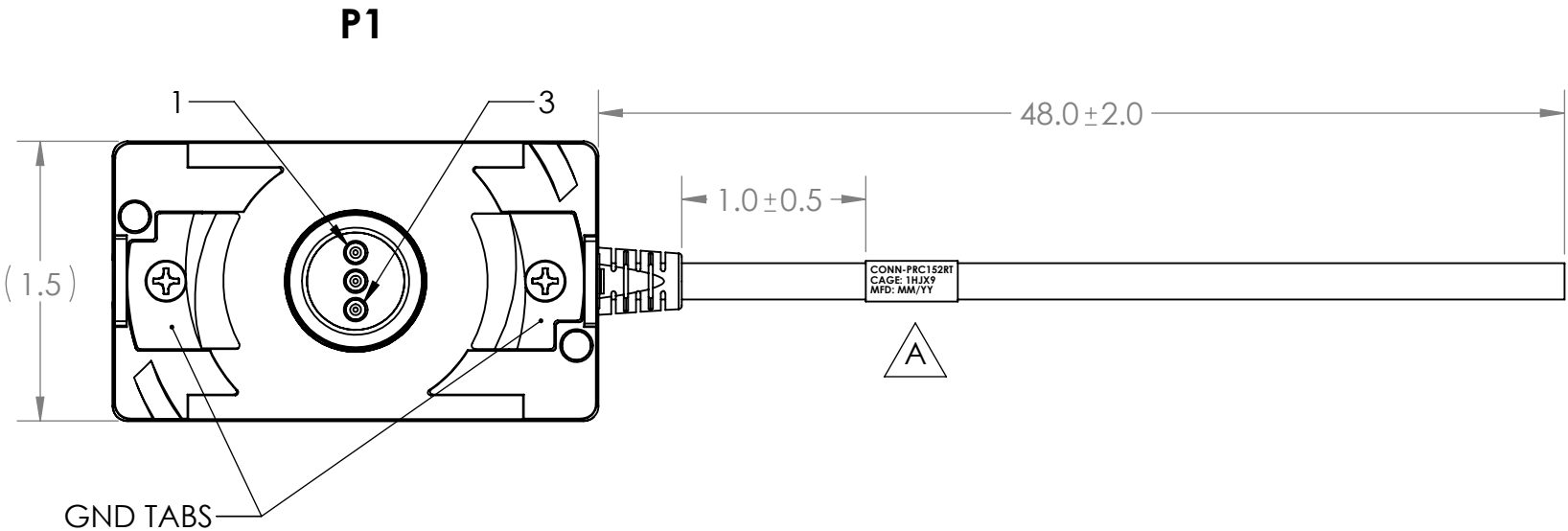
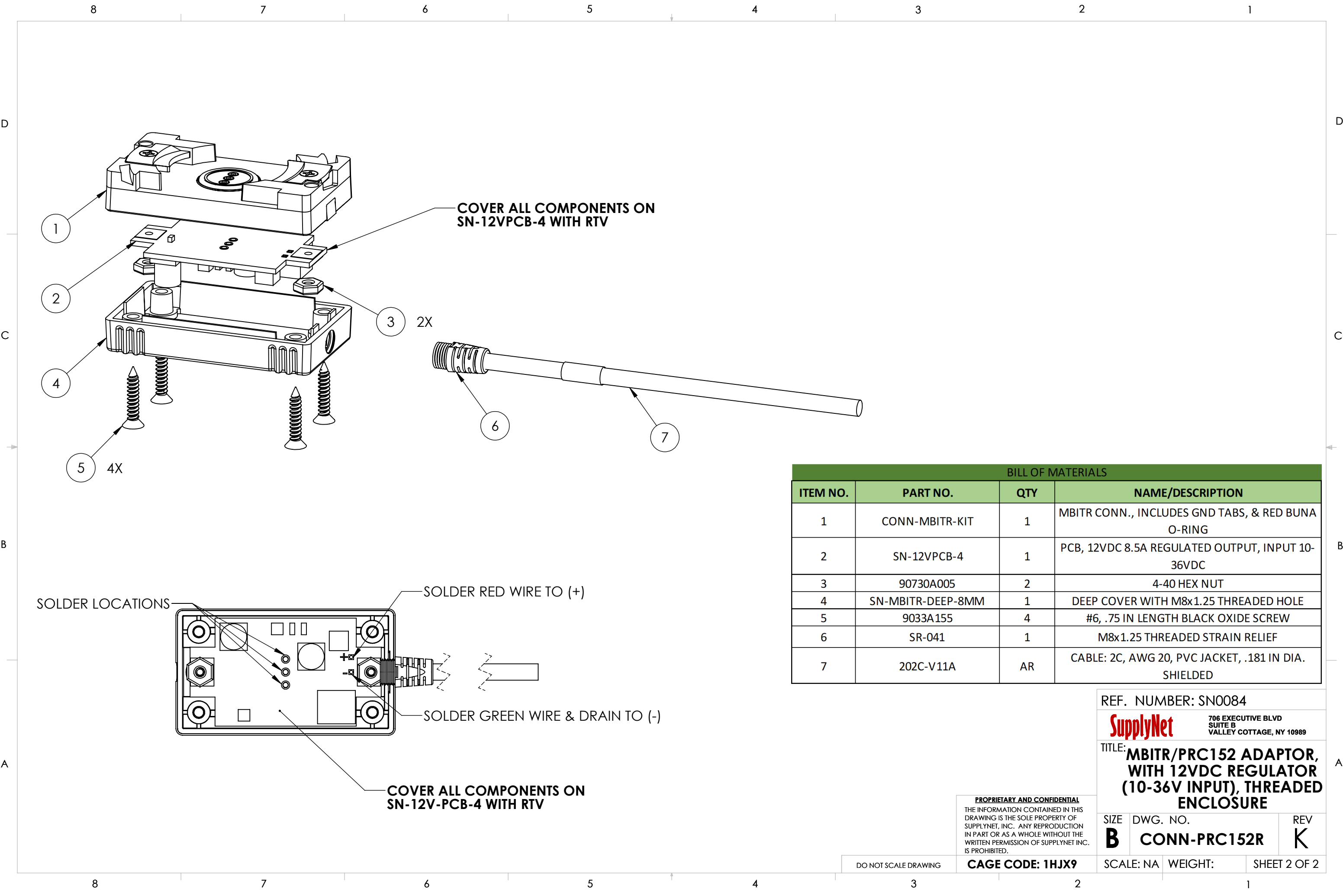


TABLE 2: LABEL IDENTIFICATION		
ITEM NO.	LABEL TEXT	NOTES
A	CONN-PRC152R REV. X CAGE: 1HJX9 MFD: MM/YY	REV. MARKING PER PO. SEE NOTE 2

- NOTES:
1. WIRING SHALL BE DONE IN ACCORDANCE WITH TABLE 1 WIRE RUN LIST.
 2. MARKING REQUIREMENTS:
 1. LABELS SHALL BE MARKED IN ACCORDANCE WITH MIL-STD-130 AS APPLICABLE.
 2. LABELS SHALL BE WHITE WITH BLACK TEXT. REFER TO TABLE 2 FOR LABEL TEXT.
 3. LABELS SHALL BE PLACED WHERE SHOWN IN DRAWING.
 3. SOLDERING: IAW IPC-J-STD-001 CLASS 2 AS APPLICABLE
 4. ASSEMBLY TO BE 100% TESTED FOR SHORTS, CONTINUITY, AND OPERATION.
 5. MANUFACTURE AND INSPECT IAW IPC/WHMA A-620 CLASS 2.

UNLESS OTHERWISE SPECIFIED:		NAME	DATE	<div>SupplyNet</div> <div>706 EXECUTIVE BLVD SUITE B VALLEY COTTAGE, NY 10989</div>	
DIMENSIONS ARE IN: INCHES		DRAWN	MOB	TITLE: <div>MBITR/PRC152 ADAPTOR, WITH 12VDC REGULATOR (10-36V INPUT), THREADED ENCLOSURE</div>	
TOLERANCES: .XX: ± 0.03 .XX: ± 0.005		CHECKED	RB		
ANGULAR: .X*: 1° .XX*: 0.5°		COMMENTS:		SIZE B	
BREAK EDGES: .005 - .020 FILLET: .005 - .020 SURFACE FINISH:					
GEOMETRIC TOLERANCING PER: ASME Y14.5 -2009		<div>PROPRIETARY AND CONFIDENTIAL</div> <div>THE INFORMATION CONTAINED IN THIS DRAWING IS THE SOLE PROPERTY OF SUPPLYNET, INC. ANY REPRODUCTION IN PART OR AS A WHOLE WITHOUT THE WRITTEN PERMISSION OF SUPPLYNET INC. IS PROHIBITED.</div>		DWG. NO. CONN-PRC152R	
MATERIAL: SEE DRAWING NOTES				REV K	
FINISH: SEE DRAWING NOTES					
DO NOT SCALE DRAWING		CAGE CODE: 1HJX9		SCALE: NA	WEIGHT:
				SHEET 1 OF 2	



BILL OF MATERIALS			
ITEM NO.	PART NO.	QTY	NAME/DESCRIPTION
1	CONN-MBITR-KIT	1	MBITR CONN., INCLUDES GND TABS, & RED BUNA O-RING
2	SN-12VPCB-4	1	PCB, 12VDC 8.5A REGULATED OUTPUT, INPUT 10-36VDC
3	90730A005	2	4-40 HEX NUT
4	SN-MBITR-DEEP-8MM	1	DEEP COVER WITH M8x1.25 THREADED HOLE
5	9033A155	4	#6, .75 IN LENGTH BLACK OXIDE SCREW
6	SR-041	1	M8x1.25 THREADED STRAIN RELIEF
7	202C-V11A	AR	CABLE: 2C, AWG 20, PVC JACKET, .181 IN DIA. SHIELDED

REF. NUMBER: SN0084

SupplyNet 706 EXECUTIVE BLVD
SUITE B
VALLEY COTTAGE, NY 10989

TITLE: **MBITR/PRC152 ADAPTOR,
WITH 12VDC REGULATOR
(10-36V INPUT), THREADED
ENCLOSURE**

SIZE	DWG. NO.	REV
B	CONN-PRC152R	K

SCALE: NA	WEIGHT:	SHEET 2 OF 2
-----------	---------	--------------

PROPRIETARY AND CONFIDENTIAL
THE INFORMATION CONTAINED IN THIS
DRAWING IS THE SOLE PROPERTY OF
SUPPLYNET, INC. ANY REPRODUCTION
IN PART OR AS A WHOLE WITHOUT THE
WRITTEN PERMISSION OF SUPPLYNET INC.
IS PROHIBITED.

CAGE CODE: 1HJX9

DO NOT SCALE DRAWING