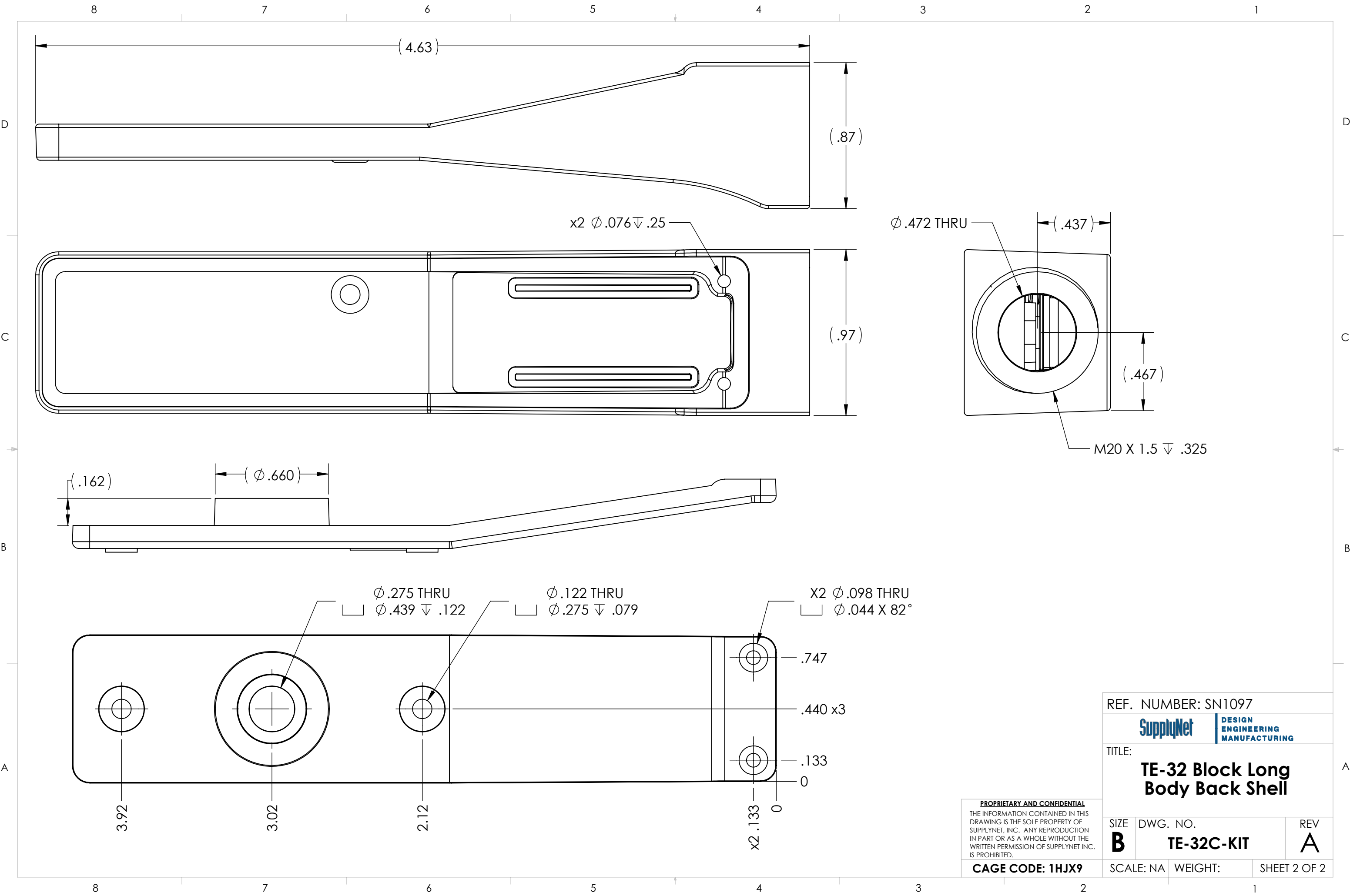


REVISIONS			
REV.	DESCRIPTION	DATE	ENG
A	INITIAL RELEASE	11/28/2023	CWA

BILL OF MATERIALS			
ITEM NO.	PART NO.	QTY	NAME/DESCRIPTION
1	SN-1155-LG-C1-COVER	1	LONG BODY COVER
2	SN-1155-LGC1HSNG	1	LONG BODY HOUSING
3	TE-32C-ASSY	1	TE-32C 32 PIN BLOCK
4	SN0072	1	PCB
5	TBD	2	4-48 UNF X 1/2" FLAT HEAD SCREWS
6	95893A387	2	NO. 2 SS FLAT HEAD THREAD-FORMING SCREWS,
7	SN0236	1	THUMBWHEEL

UNLESS OTHERWISE SPECIFIED:		NAME		DATE		<div>SupplyNet</div>		<div>DESIGN ENGINEERING MANUFACTURING</div>	
DIMENSIONS ARE IN: INCHES		DRAWN		CWA		11/28/23		TITLE: <div>TE-32 Block Long Body Back Shell</div>	
TOLERANCES: .XX: ± 0.03		CHECKED		MOB		11/28/23			
.XXX: ± 0.005		COMMENTS:							
ANGULAR: .X°: 1°									
.XX°: 0.5°		<div>PROPRIETARY AND CONFIDENTIAL</div> <div>THE INFORMATION CONTAINED IN THIS DRAWING IS THE SOLE PROPERTY OF SUPPLYNET, INC. ANY REPRODUCTION IN PART OR AS A WHOLE WITHOUT THE WRITTEN PERMISSION OF SUPPLYNET INC. IS PROHIBITED.</div>		SIZE		DWG. NO.		REV	
BREAK EDGES: .005 - .020									
FILLETS: .005 - .020									
SUFACE FINISH:									
GEOMETRIC TOLERANCING		<div>CAGE CODE: 1HJX9</div>		SCALE: NA		WEIGHT:		SHEET 1 OF 2	
PER: ASME Y14.5 -2009									
MATERIAL: SEE DRAWING NOTES									
FINISH: SEE DRAWING NOTES									
DO NOT SCALE DRAWING									



PROPRIETARY AND CONFIDENTIAL
THE INFORMATION CONTAINED IN THIS
DRAWING IS THE SOLE PROPERTY OF
SUPPLYNET, INC. ANY REPRODUCTION
IN PART OR AS A WHOLE WITHOUT THE
WRITTEN PERMISSION OF SUPPLYNET INC.
IS PROHIBITED.

CAGE CODE: 1HJX9

REF. NUMBER: SN1097

SupplyNet DESIGN
ENGINEERING
MANUFACTURING

TITLE:
**TE-32 Block Long
Body Back Shell**

SIZE	DWG. NO.	REV
B	TE-32C-KIT	A

SCALE: NA	WEIGHT:	SHEET 2 OF 2
-----------	---------	--------------