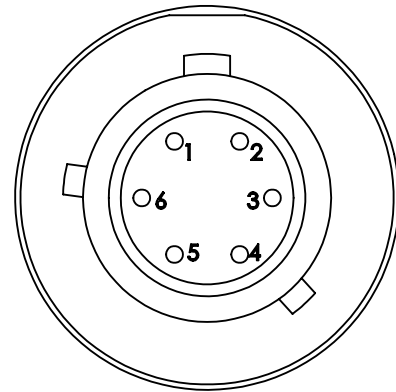
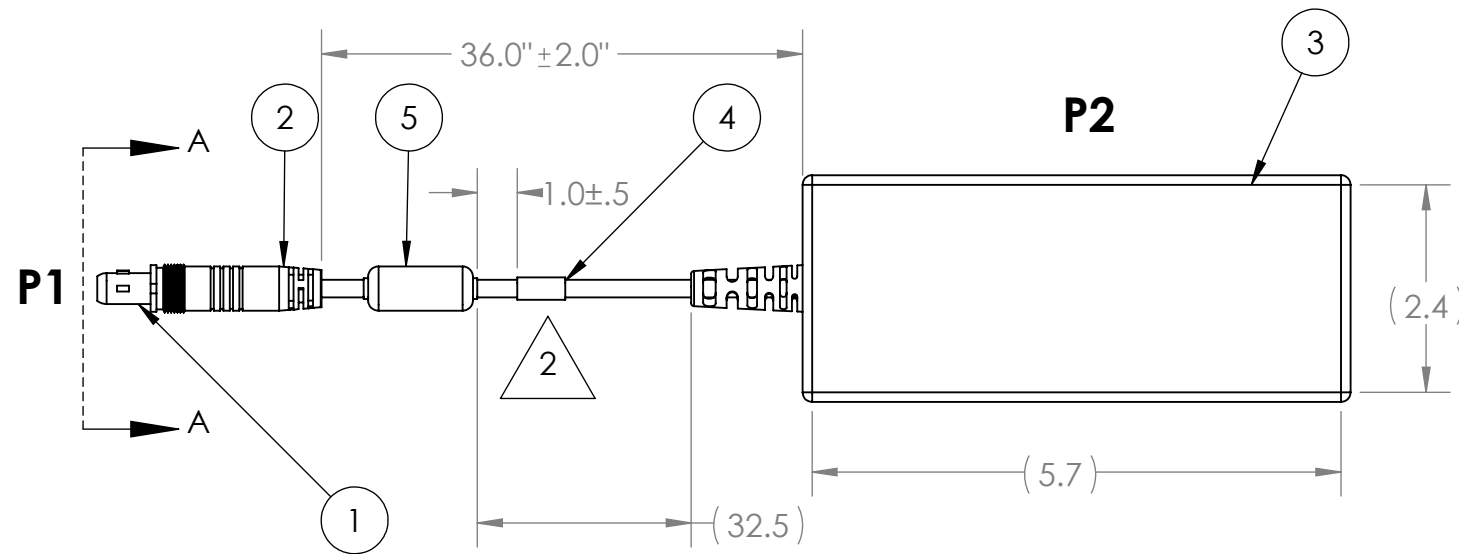


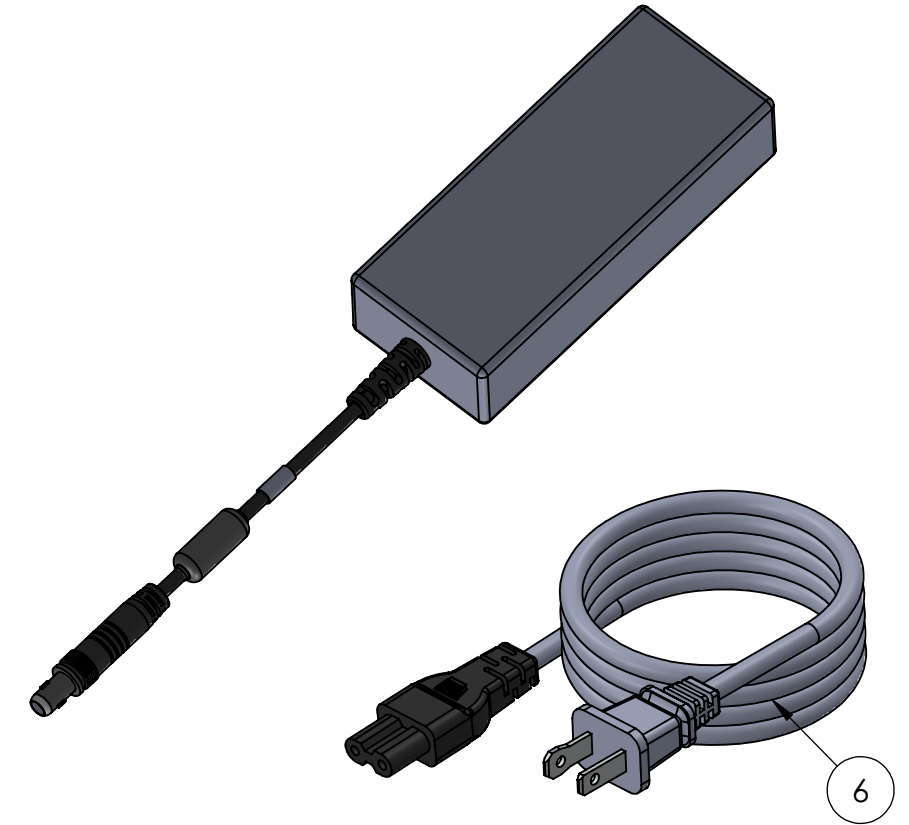
TABLE 1 WIRE RUN		
PIN LOCATION (P1)	WIRE COLOR	POWER SUPPLY (P2)
1	WHITE	+
2	DRAIN	-



PIN LAYOUT OF P1
(FRONT FACE)



REVISIONS			
REV.	DESCRIPTION	DATE	ENG
A	INITIAL RELEASE	06/06/2023	DR
B	FERRITE MOVED AND P1 DESCRIPTION UPDATED	10/31/2023	CWA
C	ITEM NO. 6 ADDED	03/07/2024	CWA



NOTES:

1. WIRING SHALL BE DONE IN ACCORDANCE WITH TABLE 1 WIRE RUN LIST.

2. MARKING REQUIREMENTS:

- A. LABEL(S) SHALL BE MARKED IN ACCORDANCE WITH MIL-STD-130 AS APPLICABLE.
- B. LABEL(S) SHALL BE WHITE WITH BLACK TEXT.
- C. LABEL(S) SHALL BE PLACED WHERE SHOWN IN DRAWING.
- D. ADHESIVE WRAP AROUND LABEL(S) MAY BE USED.
- E. LABEL SHALL BE MARKED WITH THE BELOW INFORMATION ONLY. REV MARKING PER PO.
(YYYY=YEAR OF MFG, MM=MONTH OF MFG, DD=DAY OF MFG, XXXX=PO NUMBER)

PN: SN-12-NWM REV.X
CAGE: 1HJX9
LOT: TYYYYMMDDPXXXX

3. PACKAGING REQUIREMENTS:

- A. EACH COMPLETED ASSEMBLY SHALL BE PACKAGED IN A ZIP POLYBAG.
- B. CONNECTOR(S) SHALL BE PACKAGED TO PREVENT DAMAGE DURING SHIPPING. BUBBLE WRAP OR PROTECTIVE COVER MUST BE USED.
- C. POLYBAG SHALL BE MARKED WITH SUPPLYNET LOGO, PRODUCT QR CODE, PART NUMBER, CAGE CODE, AND LOT NO, PER SN-STD-LBL REQUIREMENTS.

4. WORKMANSHIP REQUIREMENTS:

- A. MANUFACTURE TO IAW/WHMA A-620 CLASS 2 REQUIREMENTS.
- B. SOLDERING SHALL BE COMPLIANT WITH IAW J-STD-001 AS APPLICABLE.
- C. CONNECTOR(S) AND WIRE SHALL BE FREE FROM ANY SCRATCHES, CHIPS, AND DEFECTS.

5. INSPECTION REQUIREMENTS:

- A. EACH COMPLETED ASSEMBLY TO BE 100% TESTED FOR SHORTS, CONTINUITY, AND JACKET RESISTANCE (250V @100MOHM MIN.)
- B. INSPECT TO IPC/WHMA A-620 CLASS 2 REQUIREMENTS.

UNLESS OTHERWISE SPECIFIED:
DIMENSIONS ARE IN: INCHES
TOLERANCES: .XX: ± 0.03
.XXX: ± 0.005
ANGULAR: .X°: 1°
.XX°: 0.5°
BREAK EDGES: .005 - .020
FILLETS: .005 - .020
SURFACE FINISH:
GEOMETRIC TOLERANCING
PER: ASME Y14.5 -2009
MATERIAL: SEE DRAWING NOTES
FINISH: SEE DRAWING NOTES
DO NOT SCALE DRAWING

	NAME	DATE
DRAWN	DR	6/6/23
CHECKED	MOB	6/6/23
COMMENTS:		
PROPRIETARY AND CONFIDENTIAL		
THE INFORMATION CONTAINED IN THIS DRAWING IS THE SOLE PROPERTY OF SUPPLYNET, INC. ANY REPRODUCTION IN PART OR AS A WHOLE WITHOUT THE WRITTEN PERMISSION OF SUPPLYNET INC. IS PROHIBITED.		
CAGE CODE: 1HJX9		

REF. NUMBER: SN1029



TITLE:
NETT WARRIOR 6 PIN MALE TO 12VDC POWER SUPPLY

SIZE	DWG. NO.	REV
B	SN-12V-NWM	C
SCALE: NA	WEIGHT:	SHEET 1 OF 1