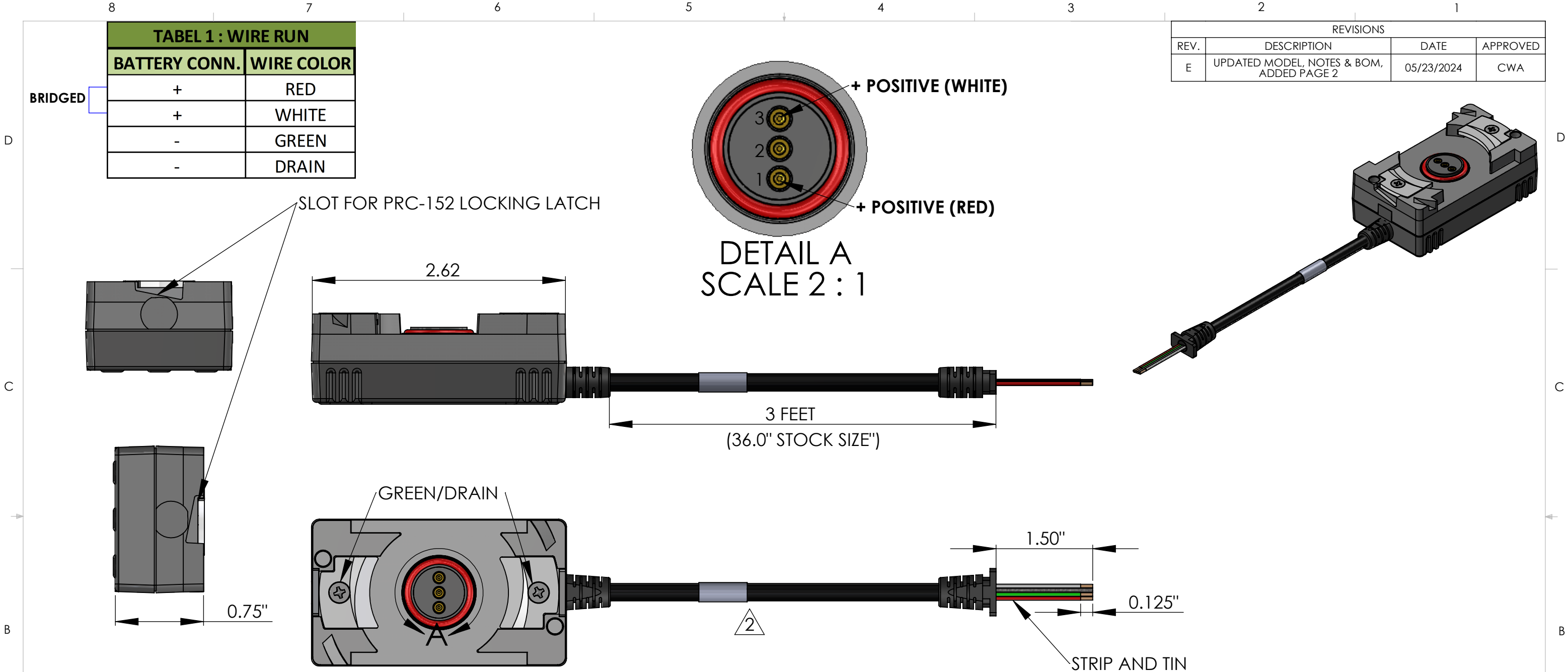


TABEL 1 : WIRE RUN	
BATTERY CONN.	WIRE COLOR
+	RED
+	WHITE
-	GREEN
-	DRAIN

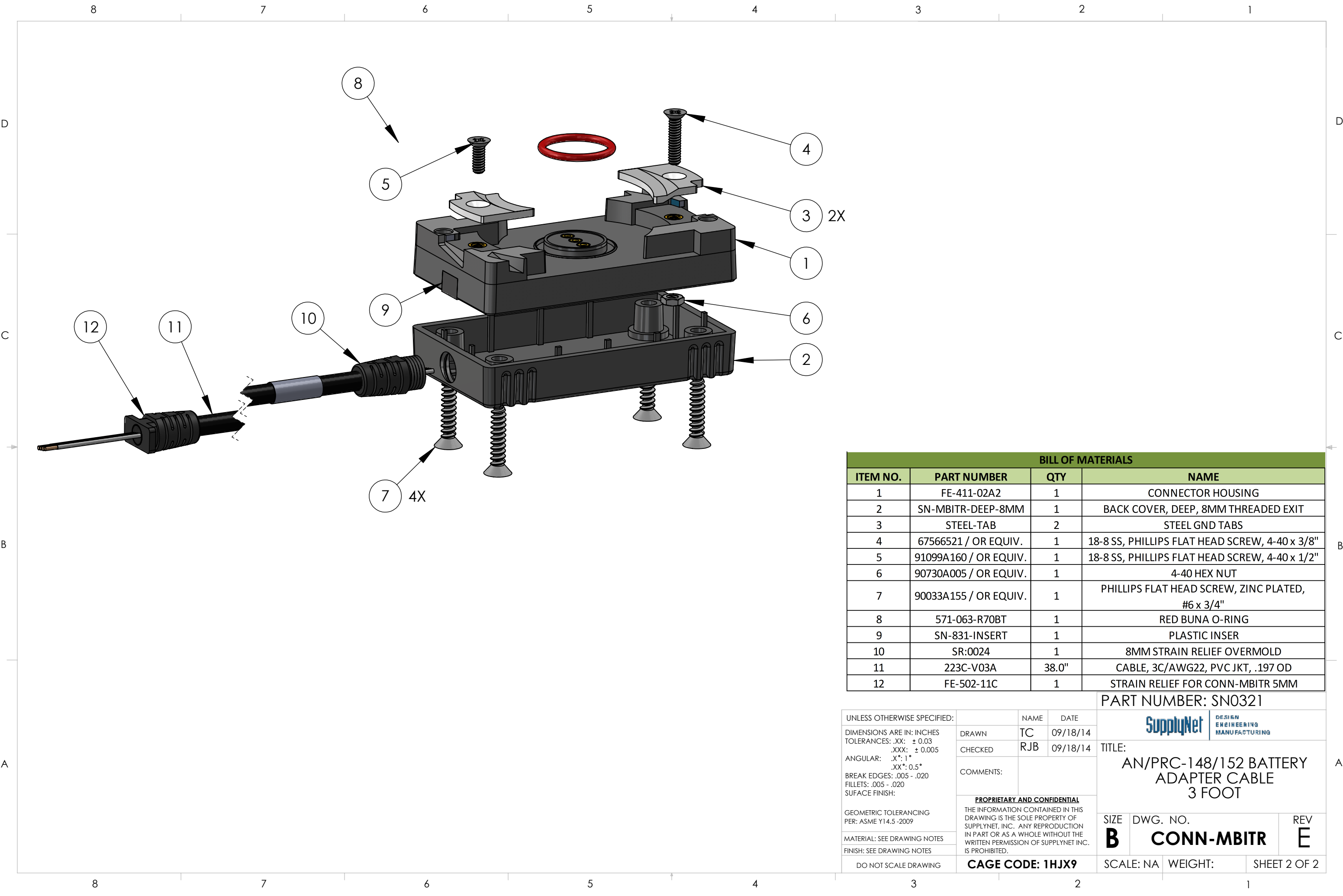
REVISIONS			
REV.	DESCRIPTION	DATE	APPROVED
E	UPDATED MODEL, NOTES & BOM, ADDED PAGE 2	05/23/2024	CWA



- NOTES:
1. WIRING SHALL BE DONE IN ACCORDANCE WITH TABLE 1 WIRE RUN LIST.
 2. MARKING REQUIREMENTS:
 - A. LABEL(S) SHALL BE MARKED IN ACCORDANCE WITH MIL-STD-130 AS APPLICABLE.
 - B. LABEL(S) SHALL BE WHITE WITH BLACK TEXT.
 - C. LABEL(S) SHALL BE PLACED WHERE SHOWN IN DRAWING.
 - D. ADHESIVE WRAP AROUND LABEL(S) MAY BE USED.
 - E. A. LABEL SHALL BE MARKED WITH THE BELOW INFORMATION ONLY. REV MARKING PER PO.
(YYYY=YEAR OF MFG, MM=MONTH OF MFG, DD=DAY OF MFG, XXXX=PO NUMBER)
PN: CONN-MBITER REV.X
CAGE: 1HJX9
LOT: TYYYYMMDDPXXXXX
 3. PACKAGING REQUIREMENTS:
 - A. EACH COMPLETED ASSEMBLY SHALL BE PACKAGED IN A ZIP POLYBAG.
 - B. CONNECTOR(S) SHALL BE PACKAGED TO PREVENT DAMAGE DURING SHIPPING. BUBBLE WRAP OR PROTECTIVE COVER MUST BE USED.
 - C. POLYBAG SHALL BE MARKED WITH SUPPLYNET LOGO, PRODUCT QR CODE, PART NUMBER, CAGE CODE, AND LOT NO, PER SN-STD-LBL REQUIREMENTS.
 4. WORKMANSHIP REQUIREMENTS:
 - A. MANUFACTURE TO IAW/WHMA A-620 CLASS 2 REQUIREMENTS.
 - B. SOLDERING SHALL BE COMPLIANT WITH IAW J-STD-001 AS APPLICABLE.
 - C. CONNECTOR(S) AND WIRE SHALL BE FREE FROM ANY SCRATCHES, CHIPS, AND DEFECTS.
 5. INSPECTION REQUIREMENTS:
 - A. EACH COMPLETED ASSEMBLY TO BE 100% TESTED FOR SHORTS, CONTINUITY, AND JACKET RESISTANCE (250V @100MOHM MIN.)
 - B. INSPECT TO IPC/WHMA A-620 CLASS 2 REQUIREMENTS.

UNLESS OTHERWISE SPECIFIED:		NAME		DATE		<div>SupplyNet</div>		<div>DESIGN ENGINEERING MANUFACTURING</div>	
DIMENSIONS ARE IN: INCHES TOLERANCES: .XX: ± 0.03 .XXX: ± 0.005 ANGULAR: .X°: 1° .XX°: 0.5° BREAK EDGES: .005 - .020 FILLET: .005 - .020 SURFACE FINISH: GEOMETRIC TOLERANCING PER: ASME Y14.5 -2009 MATERIAL: SEE DRAWING NOTES FINISH: SEE DRAWING NOTES DO NOT SCALE DRAWING	DRAWN	TC	09/18/14		TITLE: AN/PRC-148/152 BATTERY ADAPTER CABLE 3 FOOT				
	CHECKED	RJB	09/18/14						
	COMMENTS:								
PROPRIETARY AND CONFIDENTIAL		THE INFORMATION CONTAINED IN THIS DRAWING IS THE SOLE PROPERTY OF SUPPLYNET, INC. ANY REPRODUCTION IN PART OR AS A WHOLE WITHOUT THE WRITTEN PERMISSION OF SUPPLYNET INC. IS PROHIBITED.							
CAGE CODE: 1HJX9		SIZE	DWG. NO.			REV			
		B	CONN-MBITR			E			
		SCALE: NA		WEIGHT:		SHEET 1 OF 1			

****BOM ON PAGE 2**



BILL OF MATERIALS			
ITEM NO.	PART NUMBER	QTY	NAME
1	FE-411-02A2	1	CONNECTOR HOUSING
2	SN-MBITR-DEEP-8MM	1	BACK COVER, DEEP, 8MM THREADED EXIT
3	STEEL-TAB	2	STEEL GND TABS
4	67566521 / OR EQUIV.	1	18-8 SS, PHILLIPS FLAT HEAD SCREW, 4-40 x 3/8"
5	91099A160 / OR EQUIV.	1	18-8 SS, PHILLIPS FLAT HEAD SCREW, 4-40 x 1/2"
6	90730A005 / OR EQUIV.	1	4-40 HEX NUT
7	90033A155 / OR EQUIV.	1	PHILLIPS FLAT HEAD SCREW, ZINC PLATED, #6 x 3/4"
8	571-063-R70BT	1	RED BUNA O-RING
9	SN-831-INSERT	1	PLASTIC INSERT
10	SR:0024	1	8MM STRAIN RELIEF OVERMOLD
11	223C-V03A	38.0"	CABLE, 3C/AWG22, PVC JKT, .197 OD
12	FE-502-11C	1	STRAIN RELIEF FOR CONN-MBITR 5MM

UNLESS OTHERWISE SPECIFIED:		NAME		DATE		<div>SupplyNet</div>		<div>DESIGN ENGINEERING MANUFACTURING</div>	
DIMENSIONS ARE IN: INCHES TOLERANCES: .XX: ± 0.03 .XXX: ± 0.005 ANGULAR: .X°: 1° .XX°: 0.5° BREAK EDGES: .005 - .020 FILLETS: .005 - .020 SURFACE FINISH: GEOMETRIC TOLERANCING PER: ASME Y14.5 -2009 MATERIAL: SEE DRAWING NOTES FINISH: SEE DRAWING NOTES DO NOT SCALE DRAWING	DRAWN	TC	09/18/14		TITLE: AN/PRC-148/152 BATTERY ADAPTER CABLE 3 FOOT				
	CHECKED	RJB	09/18/14						
	COMMENTS:	<div>PROPRIETARY AND CONFIDENTIAL</div> <div>THE INFORMATION CONTAINED IN THIS DRAWING IS THE SOLE PROPERTY OF SUPPLYNET, INC. ANY REPRODUCTION IN PART OR AS A WHOLE WITHOUT THE WRITTEN PERMISSION OF SUPPLYNET INC. IS PROHIBITED.</div>			SIZE	DWG. NO.	REV		
					B	CONN-MBITR	E		
CAGE CODE: 1HJX9		SCALE: NA		WEIGHT:		SHEET 2 OF 2			