

REVISIONS			
REV.	DESCRIPTION	DATE	ENG
C	UPDATED BOM	04/05/2024	CWA
D	UPDATED BOM	05/21/2024	CWA
E	UPDATED BOM & MODEL	12/09/2024	CWA

BILL OF MATERIALS				
ITEM NO.	PART NO	QTY	NAME/DESCRIPTION	SUPPLIER CODE
1	SN-PRC-163-1	1	PRC-163 MAIN BODY	SN
2	SN-PRC-163-CIRC-ASSY	1	AN/PRC-163 CONTACT ASSY.	SN
3	SN-PRC-163-3	1	PLASTIC BRACKET/ INSULATOR	SN
4	SN-PRC-163-4	1	DEEP COVER, 8MM THREADED EXIT	SN
5	SN-PRC-163-6	4	GASKET FOR TOP COVER SCREWS	SN
6	SN-PRC-163-5	1	GASKET FOR CASE ON PRC-163 ASSEMBLY	SN
7	90935A153	4	BLACK-OXIDE STEEL ROUNDED HEAD SCREW, #6 SCREW SIZE, 1" LENGTH	SN
8	9452K25	1	LARGE O-RING FOR AN/PRC-163 .549" 70A ASTM D2000	SN
9	90198A100	4	#4 1/4" SCREWS FOR SN-SMALL PCB	SCS
10	91831A005	2	4-40 HEX NUT	SCS
11	STEEL-TAB-163	2	STAINLESS STEEL GND TAB	SCS
12	91099A1687	2	4-40 1/2" SCREW 18-8 STAINLESS, FLATHEAD PHILLIPS	SCS
13	9452K21	1	SMALL O-RING FOR AN/PRC-163 .364" 70A ASTM D2000 INCLUDED IN ITEM 2	SN
14	PRC-163-4	1	JUMPER WIRE WITH RING TERMINALS	SCS

SUPPLIER CODE KEY	
CODE	MEANING
SCS	SUB-CONTRACTOR SOURCED & SUPPLIED
SN	SUPPLYNET SOURCED & SUPPLIED
-L	LONG LEAD TIME ITEM

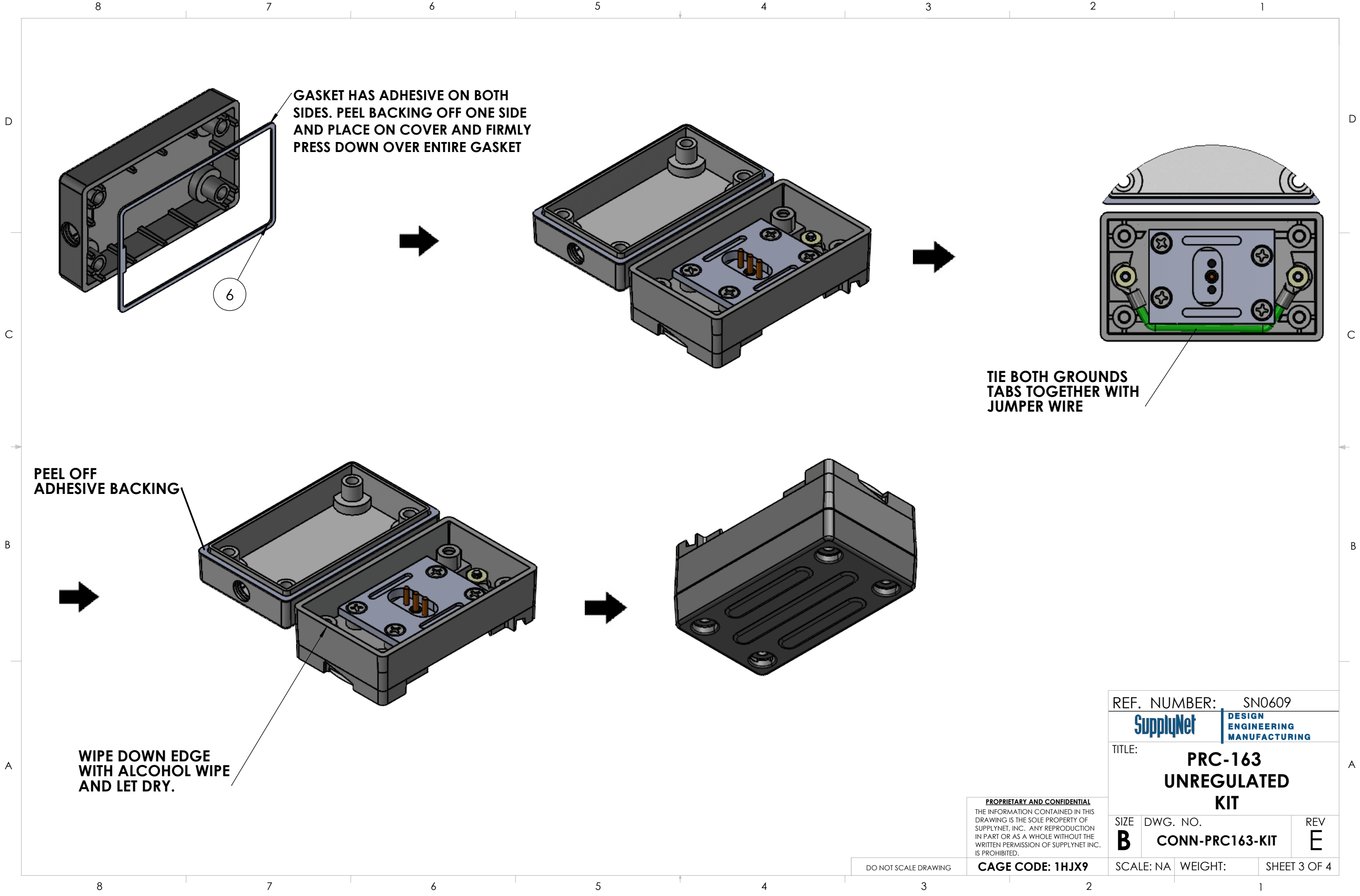
UNLESS OTHERWISE SPECIFIED:	
DIMENSIONS ARE IN: INCHES	
TOLERANCES: .XX: ± 0.03	
.XXX: ± 0.005	
ANGULAR: .X°: 1°	
.XX°: 0.5°	
BREAK EDGES: .005 - .020	
FILLETS: .005 - .020	
SURFACE FINISH:	
GEOMETRIC TOLERANCING PER: ASME Y14.5 -2009	
MATERIAL: SEE DRAWING NOTES	
FINISH: SEE DRAWING NOTES	
DO NOT SCALE DRAWING	

DRAWN	NAME	DATE
CHECKED	RB	02/10/22
COMMENTS:		
PROPRIETARY AND CONFIDENTIAL		
THE INFORMATION CONTAINED IN THIS DRAWING IS THE SOLE PROPERTY OF SUPPLYNET, INC. ANY REPRODUCTION IN PART OR AS A WHOLE WITHOUT THE WRITTEN PERMISSION OF SUPPLYNET INC. IS PROHIBITED.		
CAGE CODE: 1HJX9		

REF. NUMBER: SN0609

TITLE:		PRC-163 UNREGULATED KIT	
SIZE	DWG. NO.	REV	
B	CONN-PRC163-KIT	E	
SCALE: NA	WEIGHT:	SHEET 1 OF 4	

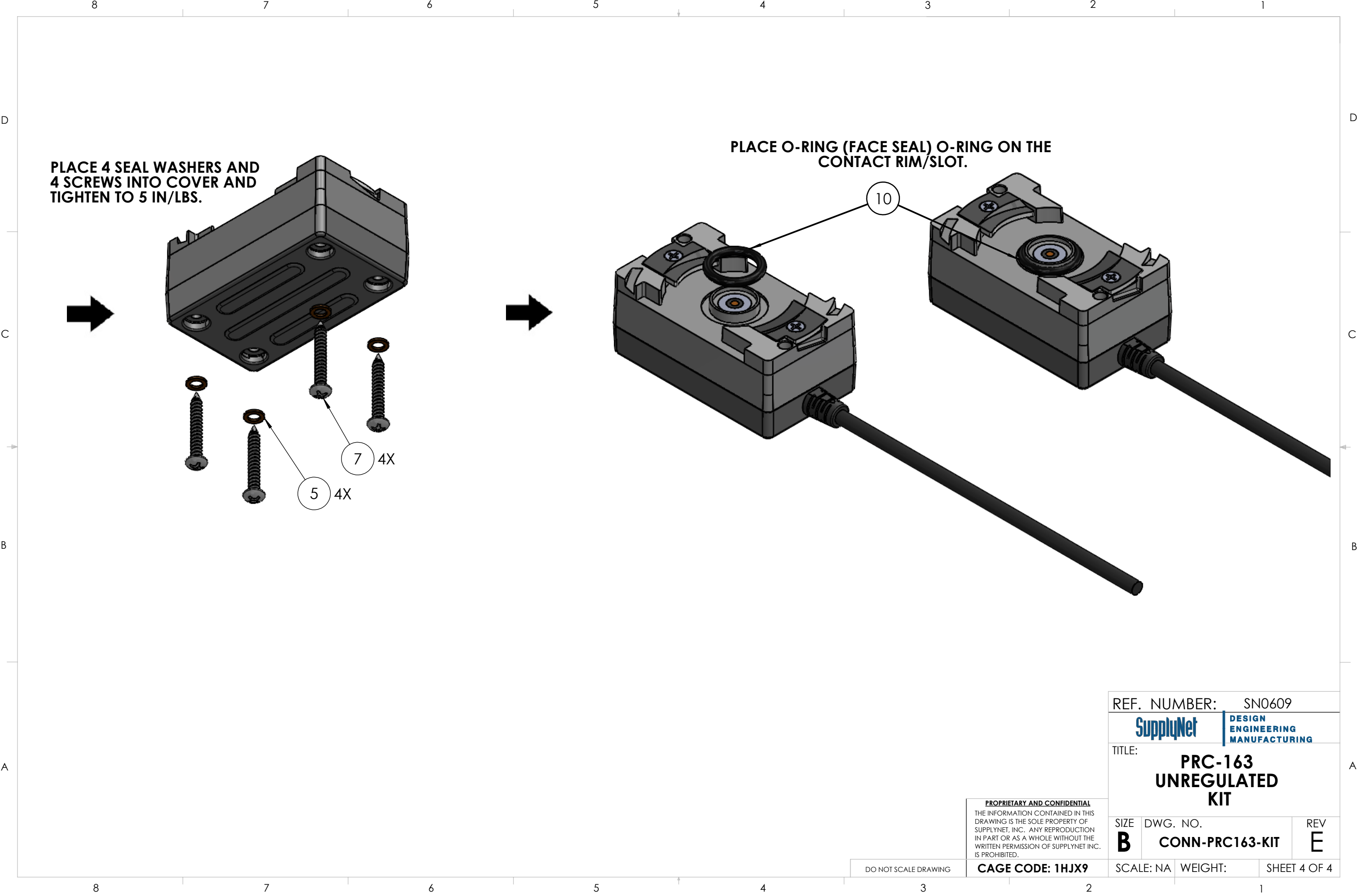




**PROPRIETARY AND CONFIDENTIAL**  
THE INFORMATION CONTAINED IN THIS DRAWING IS THE SOLE PROPERTY OF SUPPLYNET, INC. ANY REPRODUCTION IN PART OR AS A WHOLE WITHOUT THE WRITTEN PERMISSION OF SUPPLYNET INC. IS PROHIBITED.

**CAGE CODE: 1HJX9**

REF. NUMBER:		SN0609	
<div>SupplyNet</div>		<div>DESIGN ENGINEERING MANUFACTURING</div>	
TITLE:			
PRC-163 UNREGULATED KIT			
SIZE	DWG. NO.		REV
B	CONN-PRC163-KIT		E
SCALE: NA		WEIGHT:	SHEET 3 OF 4



PLACE 4 SEAL WASHERS AND  
4 SCREWS INTO COVER AND  
TIGHTEN TO 5 IN/LBS.

PLACE O-RING (FACE SEAL) O-RING ON THE  
CONTACT RIM/SLOT.



5 4X  
7 4X

10

**PROPRIETARY AND CONFIDENTIAL**  
THE INFORMATION CONTAINED IN THIS  
DRAWING IS THE SOLE PROPERTY OF  
SUPPLYNET, INC. ANY REPRODUCTION  
IN PART OR AS A WHOLE WITHOUT THE  
WRITTEN PERMISSION OF SUPPLYNET INC.  
IS PROHIBITED.

DO NOT SCALE DRAWING

CAGE CODE: 1HJX9

REF. NUMBER:		SN0609	
			
TITLE:			
PRC-163 UNREGULATED KIT			
SIZE	DWG. NO.		REV
B	CONN-PRC163-KIT		E
SCALE: NA		WEIGHT:	SHEET 4 OF 4