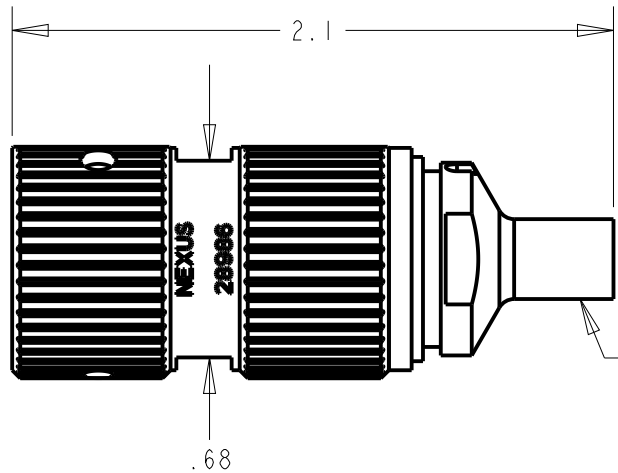
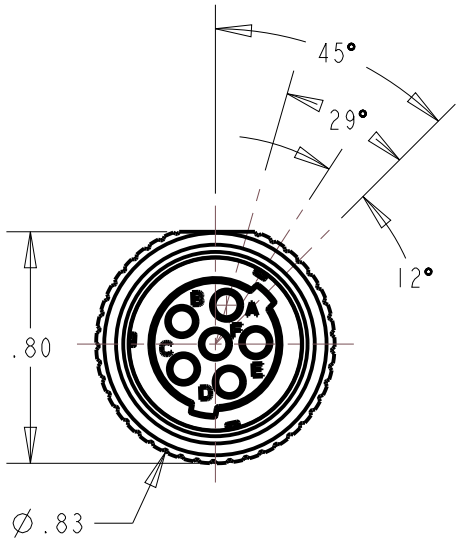
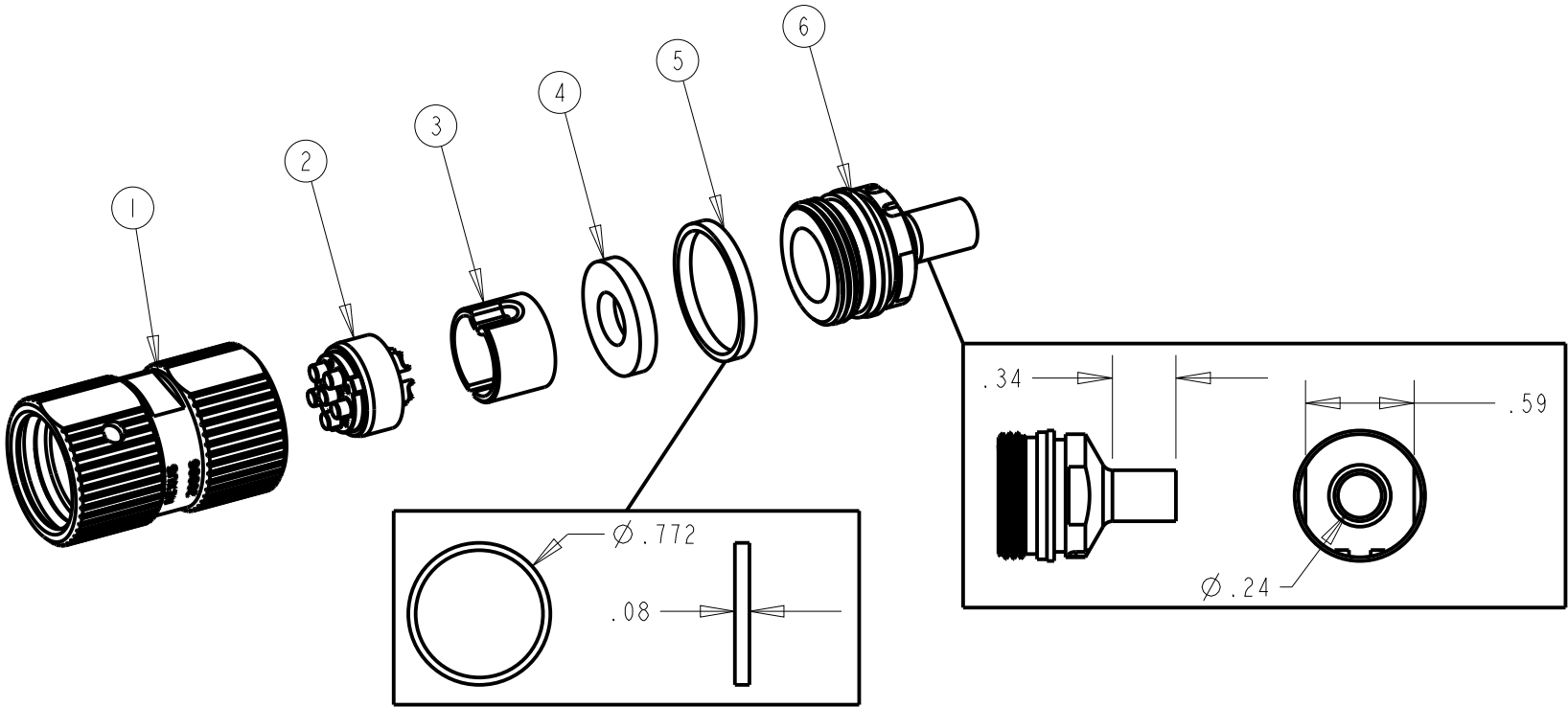


ITEM NO.	PART NUMBER	QTY	DESCRIPTION
1	AP-145-1M	1	SHELL ASSEMBLY, 303SS W/ O-RINGS
2	AP-146-6CPR	1	INSERT ASSEMBLY, 6-COND BLUE
3	AP-105-5	1	STRAIN RELIEF
4	AP-116-3	1	WASHER
5	AP-1360M-103M	1	SHUT-OFF RING
6	AP-1360M-83M	1	SHELL BELL HOUSING

NOTES:

- 1) UNLESS OTHERWISE SPECIFIED, THIS CONNECTOR MEETS ALL GENERAL REQUIREMENTS & SPECIFICATIONS OF MIL-C-55116
- 2) MATES WITH U-283/U PANEL MOUNT CONNECTOR & U-328/U INLINE CONNECTOR
- 3) THIS ASSEMBLY IS DESIGNED TO BE OVERMOLDED.
- 4) SHELL BELL HOUSING TAIL MUST BE CRIMPED TO FIT CUSTOMER CABLE DIAMETER TO PROVIDE SHIELDING, ADDITIONAL STRAIN RELIEF, AND SEALING FOR INJECTION MOLDING PROCESS
- 5) PERMANENT THREAD LOCKER MUST BE USED ON BELL HOUSING THREADS TO PREVENT LOOSENING.



CRIMP TAIL TO CABLE JACKET
FOLD SHIELD OVER JACKET BEFORE
CRIMPING IF REQUIRED
SEE NOTE 4

THIS DOCUMENT CONTAINS PROPRIETARY INFORMATION OF NEXUS, INCORPORATED
AND SUCH INFORMATION MAY NOT BE DISCLOSED TO OTHERS FOR ANY PURPOSE OR
USED FOR ANY PURPOSE WITHOUT THE WRITTEN CONSENT OF NEXUS.

A	NEW RELEASE	0	11/4/2020	
LET.	REVISION	CN #	DATE	CHK

DWN. BY BAM	DATE 11/4/2020	MATERIAL		
CHECKED BY	DATE	FINISH		
APPR. BY	DATE	WEIGHT	SCALE =	NEXUS STAMFORD, CONN
UNLESS OTHERWISE SPECIFIED: DIMENSIONS ARE IN INCHES &/OR [mm] TOLERANCES:		TITLE		
		6-COND AUDIO PLUG FOR OVERMOLD- BLUE INSERT		
		DO NOT SCALE DWG. SHEET 1 OF 1		
DECIMAL	.XX[X, X] ±.01[0, 3]	.XXX[X, XX] ±.003[0, 08]	SIZE B	DWG. NO. AP-146MSP
FRACTION ANGLES	± 1/64" ± .5°			