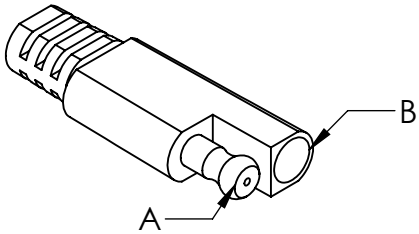
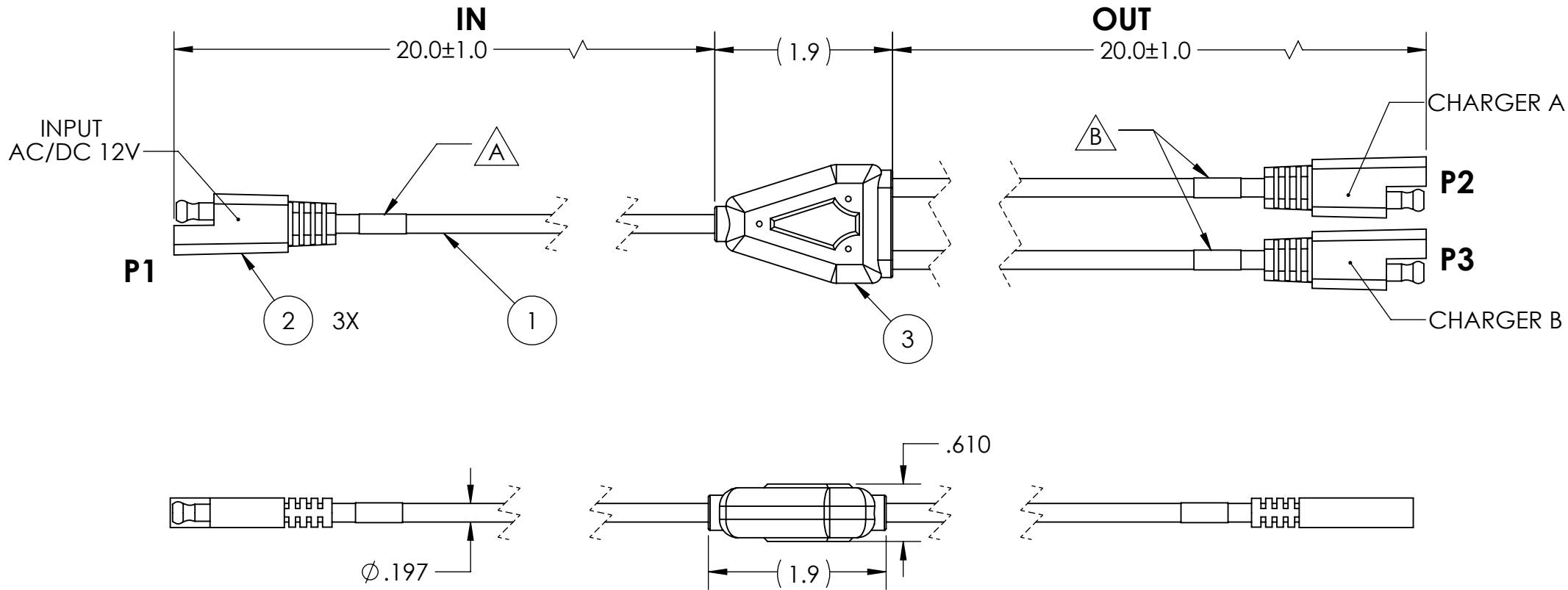


TABLE 1: WIRE RUN LIST			
P1	WIRE COLOR	P2 (WIRE COLOR)	P3 (WIRE COLOR)
A	RED	B (RED)	B (RED)
B	BLACK	A (BLACK)	A (BLACK)

TABLE 2: LABEL IDENTIFICATION		
ID	TEXT	NOTES
A	LINE 1: POWER IN	
B	LINE 1: POWER OUT	



REVISIONS			
REV.	DESCRIPTION	DATE	ENG
A	INITIAL RELEASE	01/15/2024	CWA



P1,P2 & P3 PIN LAYOUT

- NOTES:
1. WIRING SHALL BE DONE IN ACCORDANCE WITH TABLE 1 WIRE RUN LIST.
  2. MARKING REQUIREMENTS:
    - A. LABEL(S) SHALL BE MARKED IN ACCORDANCE WITH MIL-STD-130 APPLICABLE.
    - B. LABEL(S) SHALL BE WHITE WITH BLACK TEXT.
    - C. LABEL(S) SHALL BE PLACED WHERE SHOWN IN DRAWING.
    - D. ADHESIVE WRAP AROUND LABEL(S) MAY BE USED.
    - E. LABEL(S) SHALL BE MARKED WITH THE INFORMATION SHOWN IN TABLE 2: LABEL IDENTIFICATION.
  3. PACKAGING REQUIREMENTS:
    - A. EACH COMPLETED ASSEMBLY SHALL BE PACKAGED IN A ZIP POLYBAG.
    - B. CONNECTOR(S) SHALL BE PACKAGED TO PREVENT DAMAGE DURING SHIPPING, BUBBLE WRAP OR PROTECTIVE COVER MUST BE USED.
    - C. POLYBAG SHALL BE MARKED WITH SUPPLYNET LOGO, PRODUCT QR CODE, PART NO., CAGE CODE, AND LOT NO. PER SN-STD-LBL REQUIREMENTS.
  4. WORKMANSHIP REQUIREMENTS:
    - A. MANUFACTURE TO IAW/WHMA A-620 CLASS 2 REQUIREMENTS.
    - B. SOLDERING SHALL BE COMPLIANT WITH IAW-J-STD AS APPLICABLE.
    - C. CONNECTOR(S) AND WIRE SHALL BE FREE FROM ANY SCRATCHES, CHIPS, AND DEFECTS.
  5. INSPECTION REQUIREMENTS:
    - A. EACH COMPLETED ASSEMBLY TO BE 100% TESTED FOR SHORTS, CONTINUITY, AND OUTPUT VOTLAGE.
    - B. INSPECT TO IPC/WHMA A-620 CLASS 2 REQUIREMENTS.

BILL OF MATERIALS			
ITEM NO.	PART NO.	QTY	NAME/DESCRIPTION
1	182C-V02B	50"	CABLE, 2C, AWG 18, PVC JKT, .197 IN. DIA.
2	SN0234	3	2 POS. SAE CONNECTOR
3	TBD	1	2-WAY SPLITTER

UNLESS OTHERWISE SPECIFIED:		NAME	DATE					
DIMENSIONS ARE IN: INCHES		DRAWN	CWA01/14/2024		TITLE:  <b>SAE Y-SPLITTER</b>			
TOLERANCES: .XX: ± 0.03 .XXX: ± 0.005		CHECKED	RB	01/14/2024				
ANGULAR: .X*: 1° .XX*: 0.5°		COMMENTS:						
BREAK EDGES: .005 - .020 FILLETS: .005 - .020 SUFACE FINISH:								
GEOMETRIC TOLERANCING PER: ASME Y14.5 -2009		<b>PROPRIETARY AND CONFIDENTIAL</b> THE INFORMATION CONTAINED IN THIS DRAWING IS THE SOLE PROPERTY OF SUPPLYNET, INC. ANY REPRODUCTION IN PART OR AS A WHOLE WITHOUT THE WRITTEN PERMISSION OF SUPPLYNET INC. IS PROHIBITED.			SIZE <b>B</b>	DWG. NO. <b>SN-SAE-SPLITTER</b>	REV <b>A</b>	
MATERIAL: SEE DRAWING NOTES		DO NOT SCALE DRAWING			SCALE: NA		WEIGHT:	SHEET 1 OF 1
FINISH: SEE DRAWING NOTES					CAGE CODE: 1HJX9			