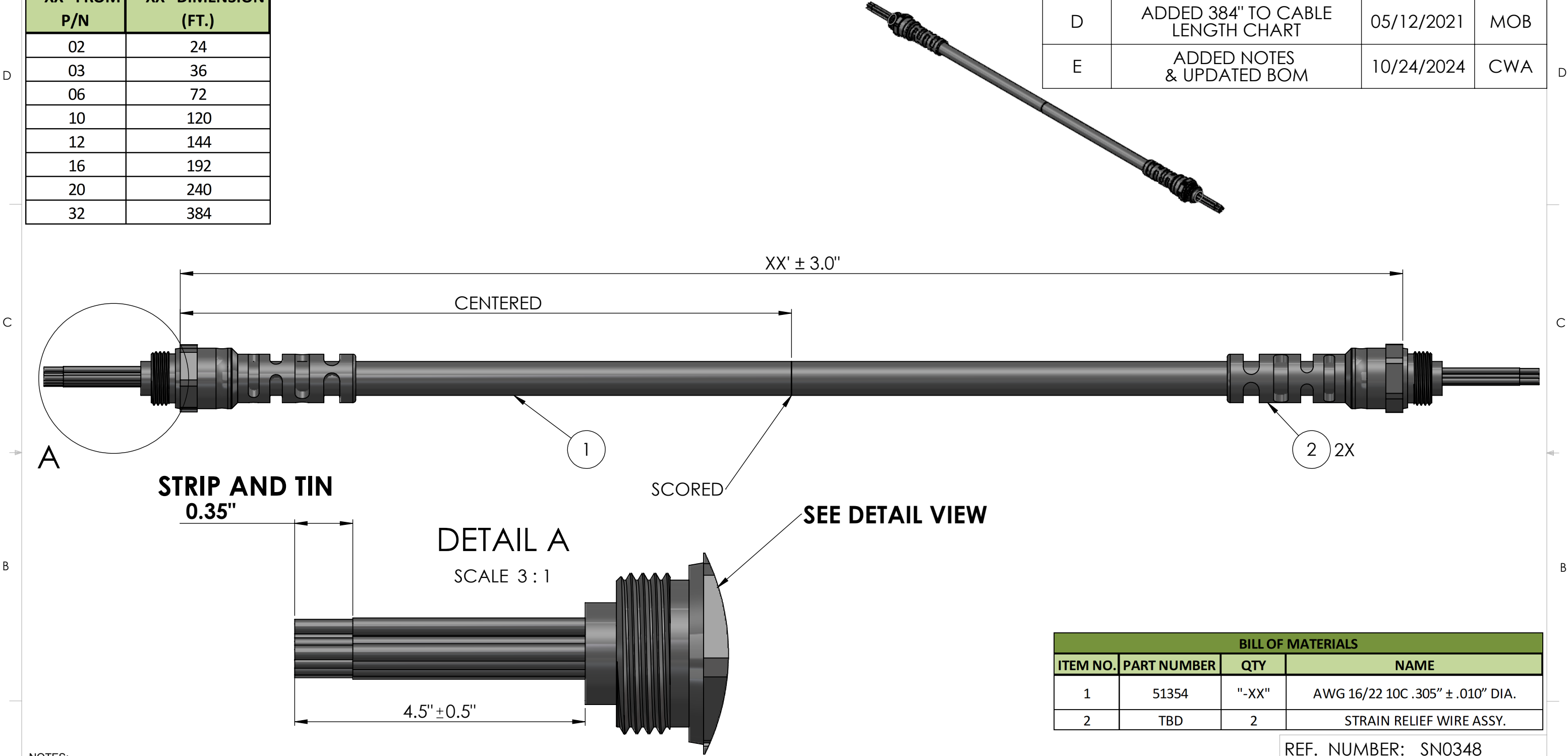




TABLE 1: WIRE LENGTH TABLE	
"-XX" FROM P/N	"-XX" DIMENSION (FT.)
02	24
03	36
06	72
10	120
12	144
16	192
20	240
32	384

REVISIONS			
REV	DESCRIPTION	DATE	ENG
D	ADDED 384" TO CABLE LENGTH CHART	05/12/2021	MOB
E	ADDED NOTES & UPDATED BOM	10/24/2024	CWA



BILL OF MATERIALS			
ITEM NO.	PART NUMBER	QTY	NAME
1	51354	"-XX"	AWG 16/22 10C .305" ± .010" DIA.
2	TBD	2	STRAIN RELIEF WIRE ASSY.

- NOTES:
- WIRING SHALL BE DONE IN ACCORDANCE WITH TABLE 1 WIRE RUN LIST.
 - PACKAGING REQUIREMENTS:
 - EACH COMPLETED ASSEMBLY SHALL BE PACKAGED IN A ZIP POLYBAG.
 - CONNECTOR(S) SHALL BE PACKAGED TO PREVENT DAMAGE DURING SHIPPING. BUBBLE WRAP OR PROTECTIVE COVER MUST BE USED.
 - POLYBAG SHALL BE MARKED WITH SUPPLYNET LOGO, PRODUCT QR CODE, PART NUMBER, CAGE CODE, AND LOT NO, PER SN-STD-LBL REQUIREMENTS.
 - WORKMANSHIP REQUIREMENTS:
 - MANUFACTURE TO IAW/WHMA A-620 CLASS 2 REQUIREMENTS.
 - SOLDERING SHALL BE COMPLIANT WITH IAW J-STD-001 AS APPLICABLE.
 - CONNECTOR(S) AND WIRE SHALL BE FREE FROM ANY SCRATCHES, CHIPS, AND DEFECTS.
 - INSPECTION REQUIREMENTS:
 - EACH COMPLETED ASSEMBLY TO BE 100% TESTED FOR SHORTS, CONTINUITY, AND JACKET RESISTANCE (250V @100MOHM MIN.)
 - INSPECT TO IPC/WHMA A-620 CLASS 2 REQUIREMENTS.

UNLESS OTHERWISE SPECIFIED:		NAME	DATE					
DIMENSIONS ARE IN: INCHES		DRAWN	TC	06/02/2015	TITLE: OVER MOLDED STRAIN RELIEF WIRE ASSEMBLY DOUBLE ENDED			
TOLERANCES: .XX: ± 0.03 .XXX: ± 0.005		CHECKED	RB	06/02/2015				
ANGULAR: .X°: 1° .XX°: 0.5°		COMMENTS:						
BREAK EDGES: .005 - .020 FILLET: .005 - .020 SURFACE FINISH:								
GEOMETRIC TOLERANCING PER: ASME Y14.5-2009		PROPRIETARY AND CONFIDENTIAL THE INFORMATION CONTAINED IN THIS DRAWING IS THE SOLE PROPERTY OF SUPPLYNET, INC. ANY REPRODUCTION IN PART OR AS A WHOLE WITHOUT THE WRITTEN PERMISSION OF SUPPLYNET INC. IS PROHIBITED.			SIZE	DWG. NO.		REV
MATERIAL: SEE DRAWING NOTES		CAGE CODE: 1HJX9			B	SN-404-10C2-XX		E
FINISH: SEE DRAWING NOTES					SCALE: NA	WEIGHT:		SHEET 1 OF 1
DO NOT SCALE DRAWING								