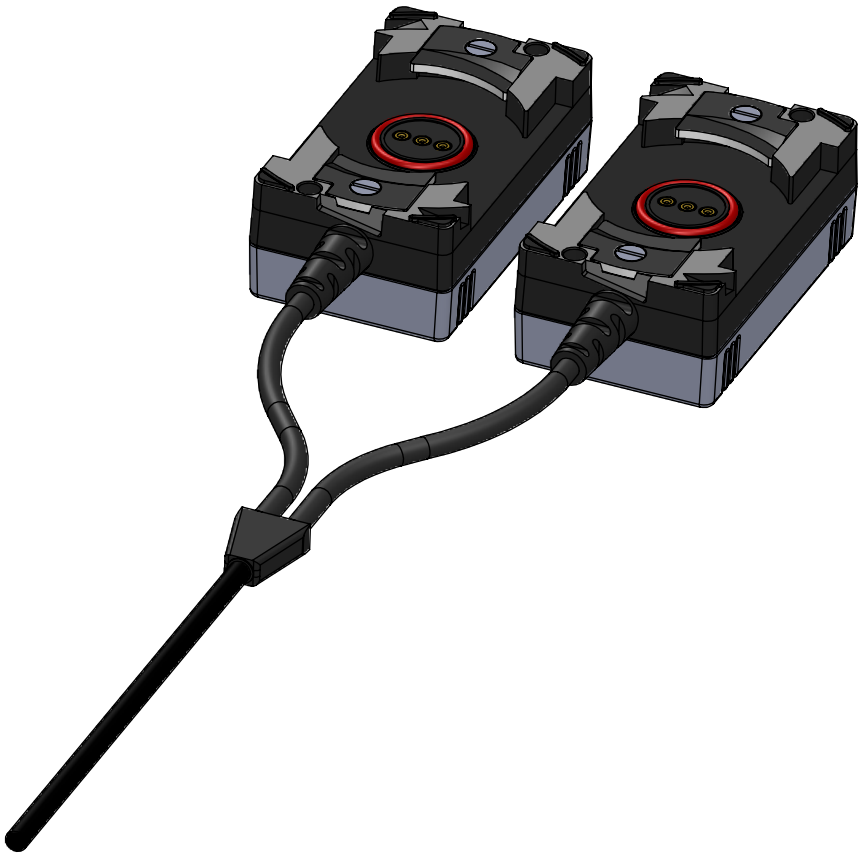
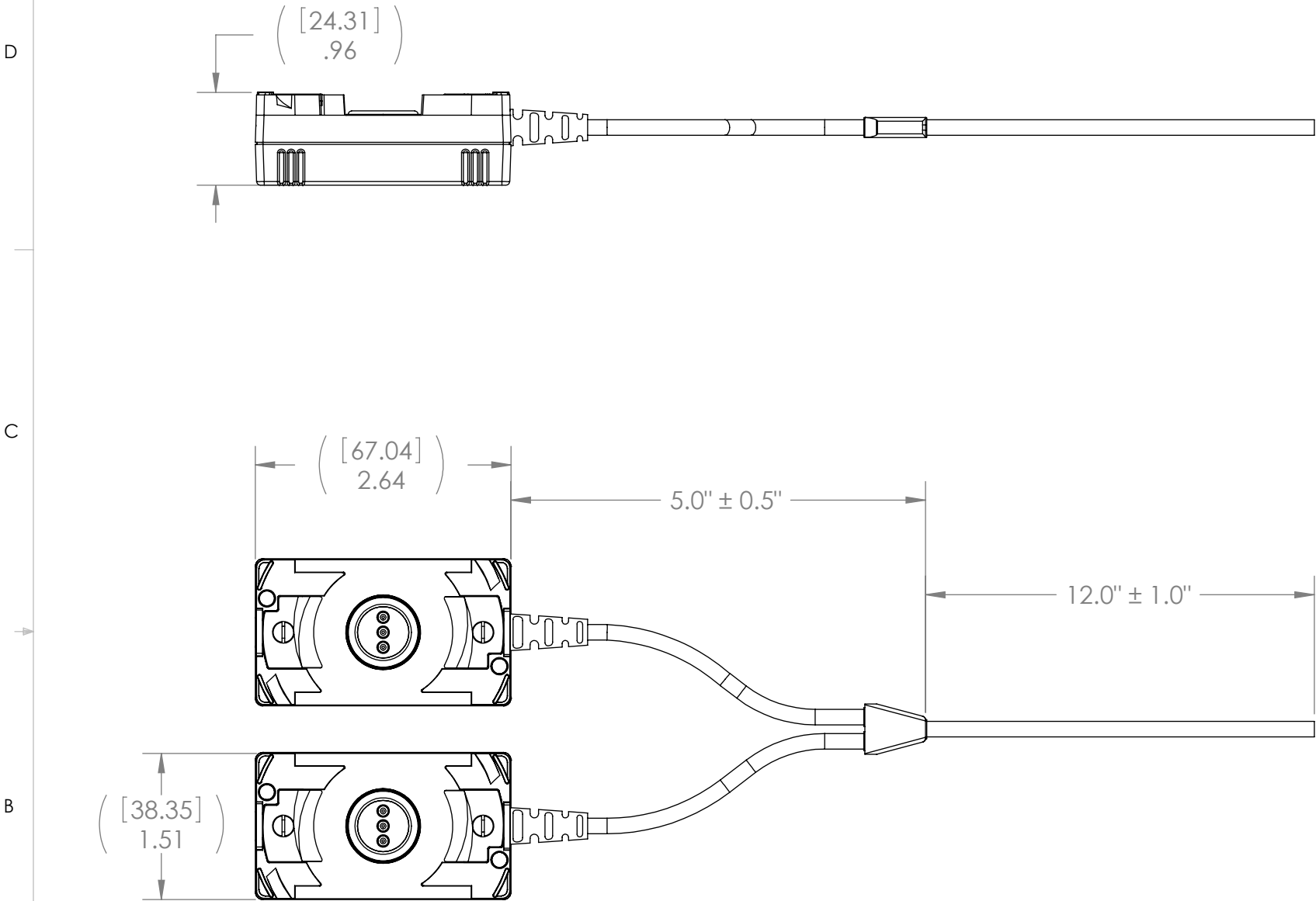


REV	DATE	DESCRIPTION OF CHANGE	ENG
C	03/07/2019	ADDED POTTING INSTRUCTIONS (P.3)	LS

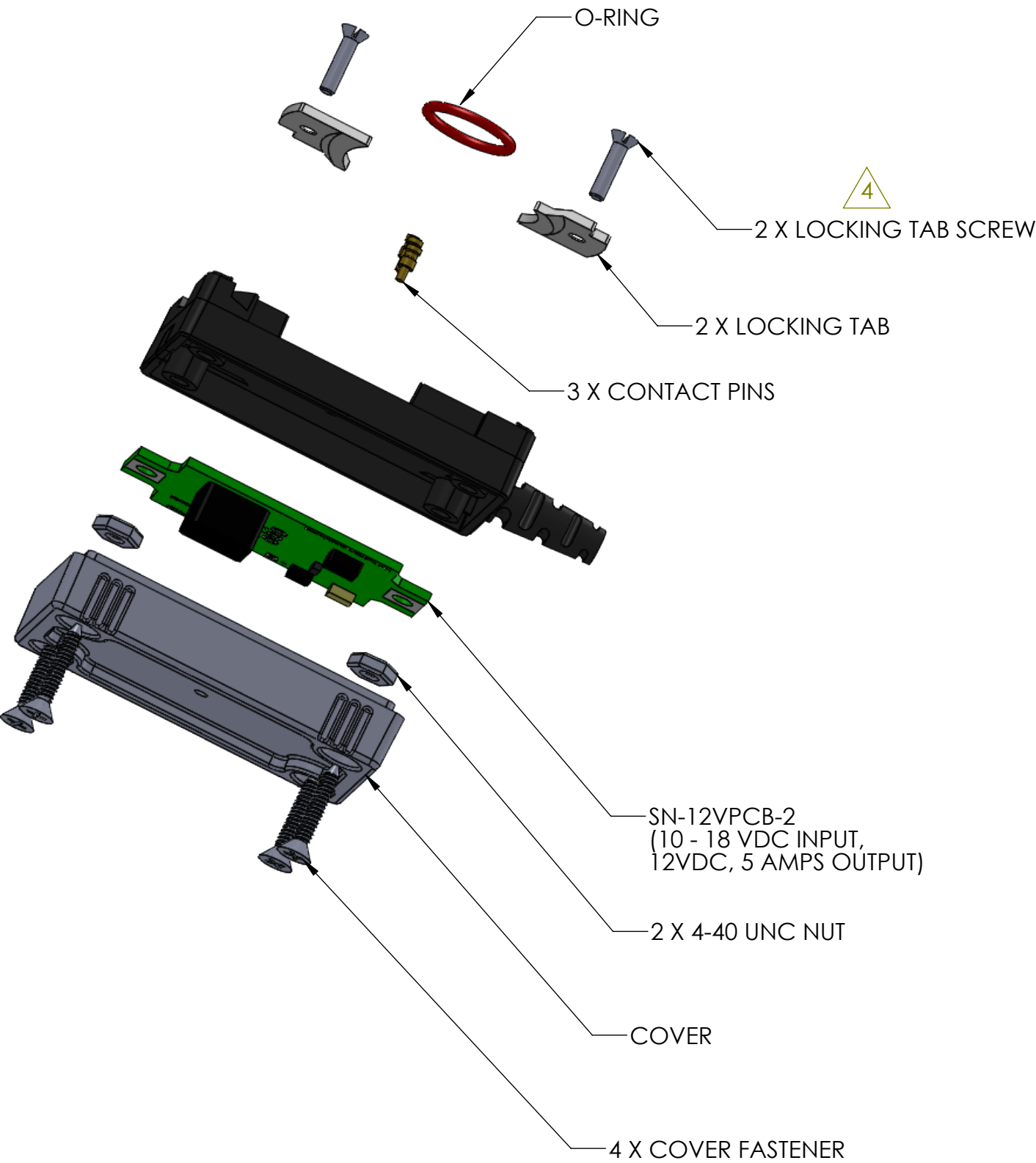


NOTES:


- 1) PCB TO BE SOLDERED IAW IPC-J-STD-001 AS APPLICABLE.
- 2) PCB INSTALLATION AND WIRING INSTRUCTIONS ON SHEET 3.
- 4) PCB AND FASTENNG NUTS ARE INSTALLED OVER THESE SCREWS.

UNLESS OTHERWISE SPECIFIED:		NAME		DATE		<div>SupplyNet</div>		706 EXECUTIVE BLVD. SUITE B VALLEY COTTAGE, NY 10989			
DIMENSIONS ARE IN: INCHES		DRAWN	LS	7/19/17		TITLE: DUAL PRC 152 / PRC 148 MBITR WITH INTEGRATED 12V REGULATOR, UNTERMINATED 17"					
TOLERANCES: .XX: ± 0.03		CHECKED	TC	7/19/17							
.XXX: ± 0.005		COMMENTS:									
ANGULAR: .X*: 1° .XX*: 0.5°											
BREAK EDGES: .005 - .020		<div>PROPRIETARY AND CONFIDENTIAL</div> <div>THE INFORMATION CONTAINED IN THIS DRAWING IS THE SOLE PROPERTY OF SUPPLYNET, INC. ANY REPRODUCTION IN PART OR AS A WHOLE WITHOUT THE WRITTEN PERMISSION OF SUPPLYNET INC. IS PROHIBITED.</div>									
FILLETS: .005 - .020											
SURFACE FINISH:						SIZE		DWG. NO.		REV	
GEOMETRIC TOLERANCING						B		SN-238		C	
PER: ASME Y14.5-2009											
MATERIAL: SEE DRAWING NOTES											
FINISH: SEE DRAWING NOTES											
DO NOT SCALE DRAWING		CAGE CODE: 1HJX9				SCALE: NA		WEIGHT:		SHEET 1 OF 3	

TYPICAL EXPLODED VIEW OF
ONE SIDE OF MBITR.

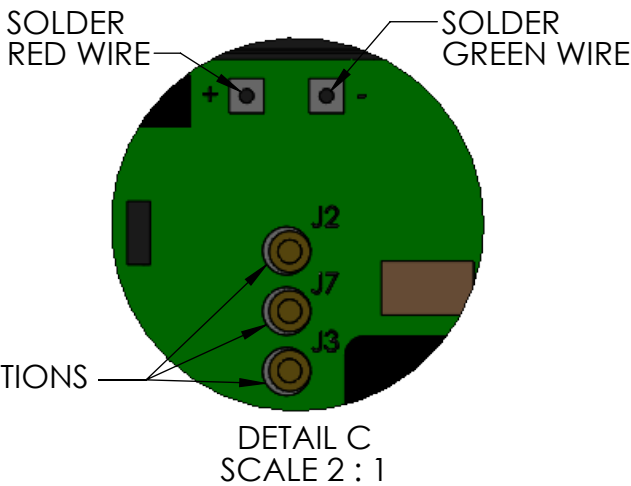
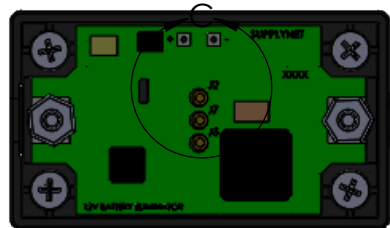
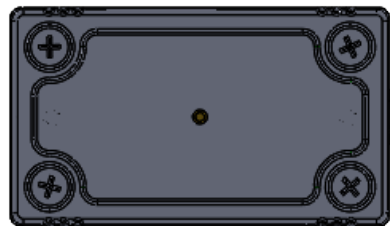


PROPRIETARY AND CONFIDENTIAL
THE INFORMATION CONTAINED IN THIS
DRAWING IS THE SOLE PROPERTY OF
SUPPLYNET, INC. ANY REPRODUCTION
IN PART OR AS A WHOLE WITHOUT THE
WRITTEN PERMISSION OF SUPPLYNET INC.
IS PROHIBITED.
CAGE CODE: 1HJX9

REF. NUMBER:		SN0488	
		706 EXECUTIVE BLVD.	
		SUITE B	
		VALLEY COTTAGE, NY 10989	
TITLE:			
DUAL PRC 152 / PRC 148 MBITR WITH INTEGRATED 12V REGULATOR, UNTERMINATED 17"			
SIZE	DWG. NO.		C
B	SN-238		
SCALE: NA		WEIGHT:	SHEET 2 OF 3



PRC-152

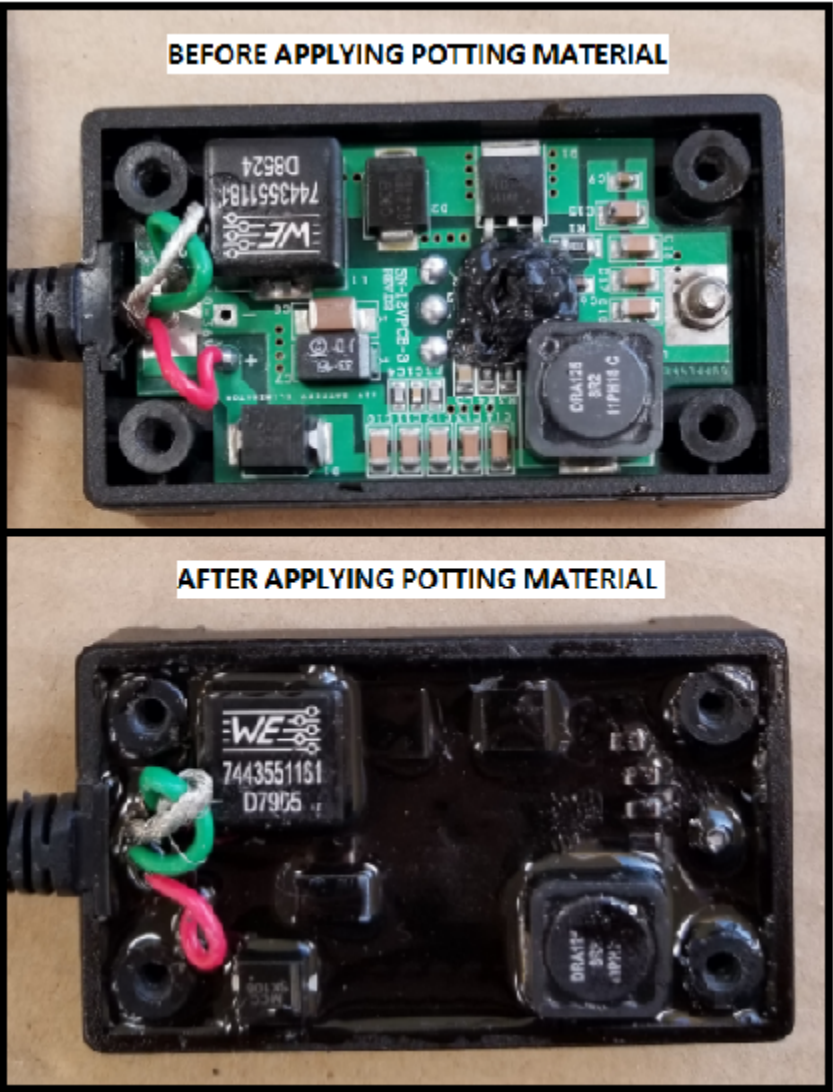


PCB INSTALLATION AND WIRING INSTRUCTIONS:

- 1) LOCATE AND INSTALL PCB AS SHOWN.
- 2) SECURE PCB TO HOUSING USING 4-40 UNC FASTENING NUTS.
- 3) WIRE PER TABLE 1. SOLDERING IAW IPC-J-STD-001 FOR EACH BA5590 (M).
- 4) APPLY POTTING MATERIAL TO PCBs AS INDICATED. DO NOT OVERFILL.
- 5) ATTACH COVER USING THE MOUNTING SCREWS.

TABLE 1	
PRC 152	WIRE COLOR
-	GREEN
+	RED

PCB POTTING PROCEDURE



IMPORTANT: ATTACH
BOTTOM COVER OF
ENCLOSURE BEFORE
POTTING MATERIAL CURES.

PROPRIETARY AND CONFIDENTIAL
THE INFORMATION CONTAINED IN THIS
DRAWING IS THE SOLE PROPERTY OF
SUPPLYNET, INC. ANY REPRODUCTION
IN PART OR AS A WHOLE WITHOUT THE
WRITTEN PERMISSION OF SUPPLYNET INC.
IS PROHIBITED.

CAGE CODE: 1HJX9

REF. NUMBER:		SN0488	
SupplyNet		706 EXECUTIVE BLVD. SUITE B VALLEY COTTAGE, NY 10989	
TITLE:			
DUAL PRC 152 / PRC 148 MBITR WITH INTEGRATED 12V REGULATOR, UNTERMINATED 17"			
SIZE	DWG. NO.		REV
B	SN-238		C
SCALE: NA		WEIGHT:	SHEET 3 OF 3