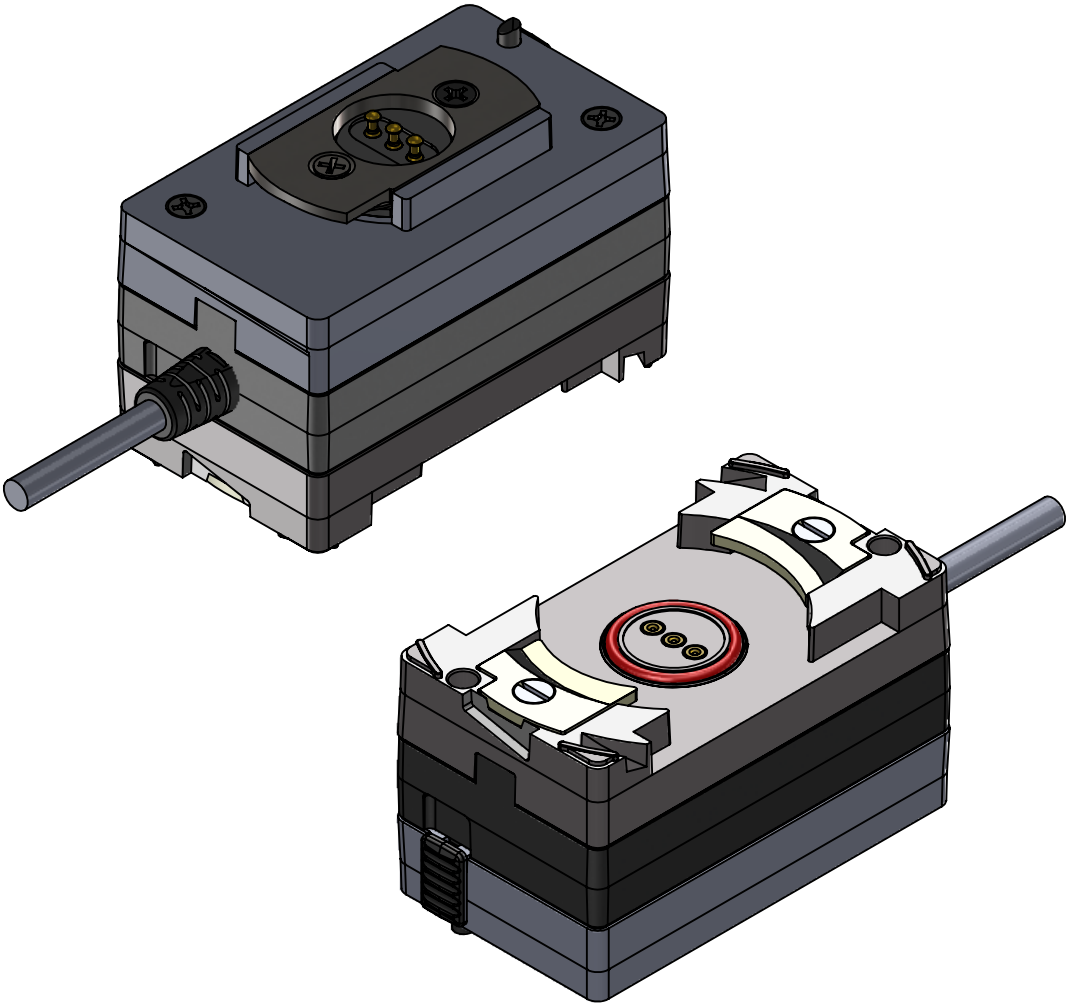
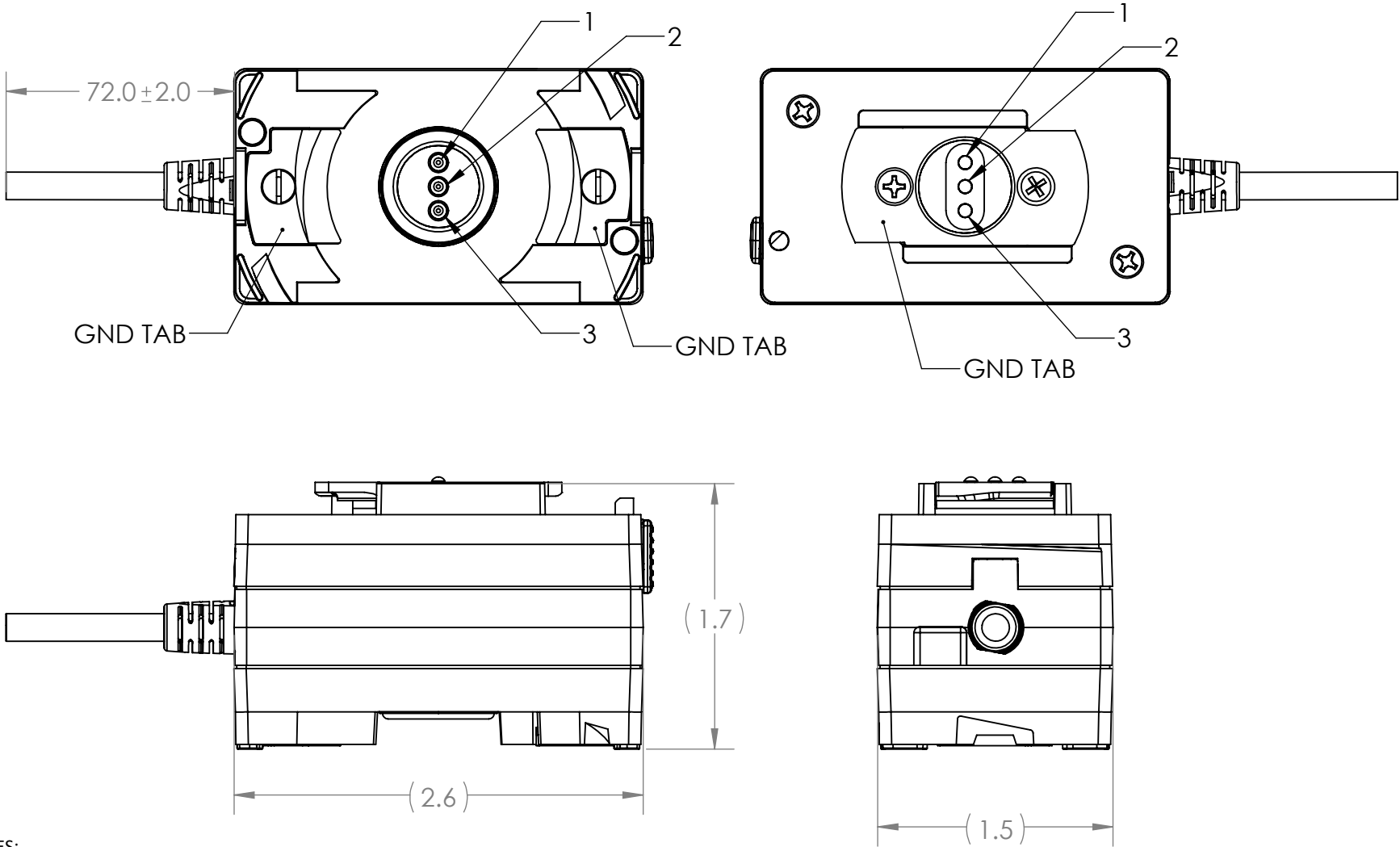


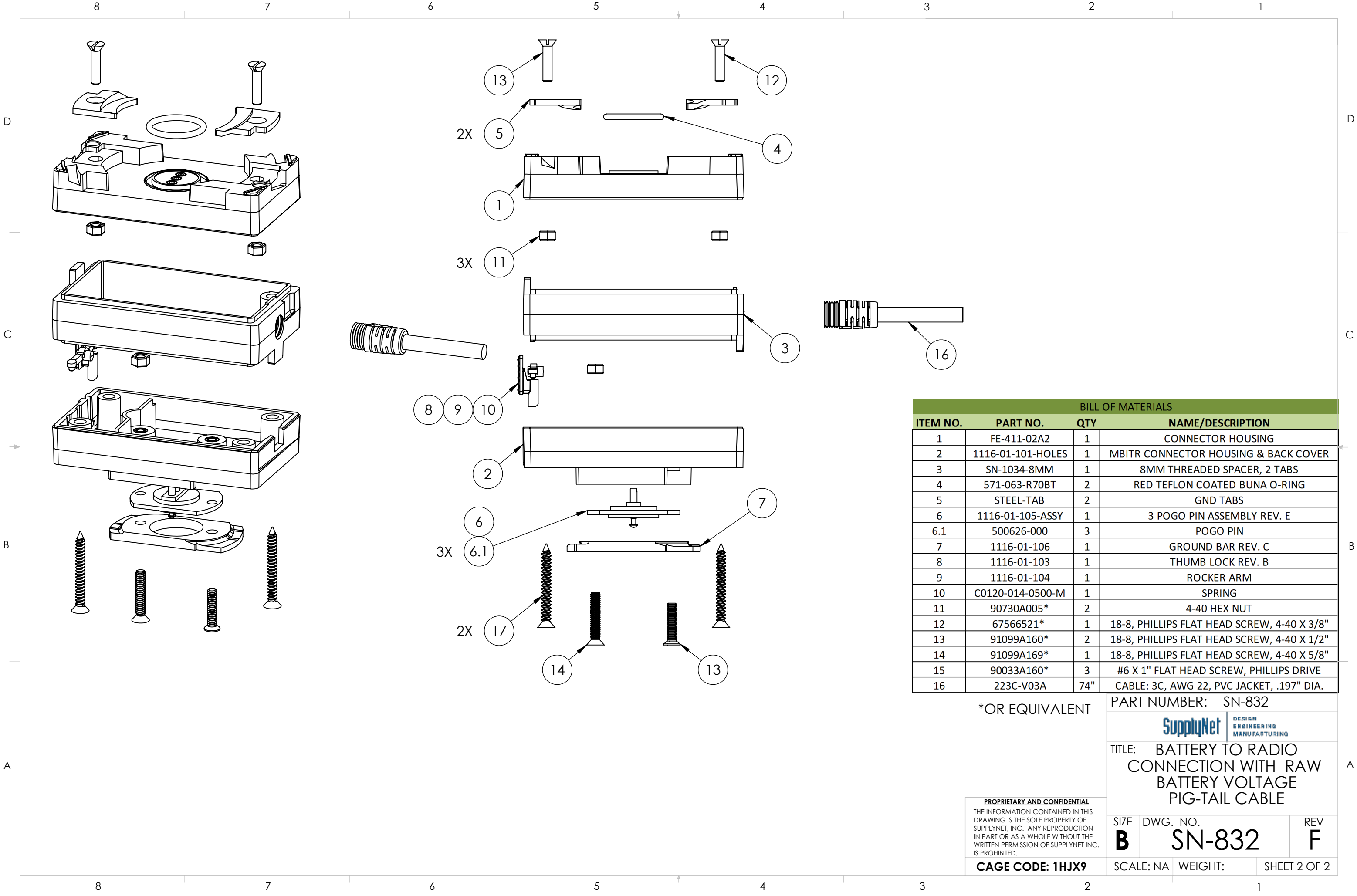
SN0832 Wire Run List		
CONN-MBITR	Wire Color	SN-799
Pin 1	RED	Pin 1
Pin 2	White	Pin 2
Pin 3	RED	Pin 3
Steel Tabs	Green + Drain	Steel Tabs
	Shrink Boot Drain	
	Wire Inside Box	
Wire Lenth 6 feet		

REVISIONS			
REV.	DESCRIPTION	DATE	ENG
D	ADDED BOM	12/2/2022	KC
E	REDRAWN WITHOUT CHANGE: FIXED SPACER CAD MODEL	12/30/2022	MOB
F	MODEL, BOM & NOTES UPDATED	03/12/2024	CWA



- NOTES:
1. WIRING SHALL BE DONE IN ACCORDANCE WITH TABLE 1 WIRE RUN LIST.
 2. PACKAGING REQUIREMENTS:
 - A. EACH COMPLETED ASSEMBLY SHALL BE PACKAGED IN A ZIP POLYBAG.
 - B. CONNECTOR(S) SHALL BE PACKAGED TO PREVENT DAMAGE DURING SHIPPING. BUBBLE WRAP OR PROTECTIVE COVER MUST BE USED.
 - C. POLYBAG SHALL BE MARKED WITH SUPPLYNET LOGO, PRODUCT QR CODE, PART NUMBER, CAGE CODE, AND LOT NO, PER SN-STD-LBL REQUIREMENTS.
 3. WORKMANSHIP REQUIREMENTS:
 - A. MANUFACTURE TO IAW/WHMA A-620 CLASS 2 REQUIREMENTS.
 - B. SOLDERING SHALL BE COMPLIANT WITH IAW J-STD-001 AS APPLICABLE.
 - C. CONNECTOR(S) AND WIRE SHALL BE FREE FROM ANY SCRATCHES, CHIPS, AND DEFECTS.
 4. INSPECTION REQUIREMENTS:
 - A. EACH COMPLETED ASSEMBLY TO BE 100% TESTED FOR SHORTS, CONTINUITY, AND JACKET RESISTANCE (250V @100MOHM MIN.)
 - B. INSPECT TO IPC/WHMA A-620 CLASS 2 REQUIREMENTS.

UNLESS OTHERWISE SPECIFIED:		NAME		DATE		<div>SupplyNet</div>		<div>DESIGN ENGINEERING MANUFACTURING</div>				
DIMENSIONS ARE IN: INCHES TOLERANCES: .XX: ± 0.03 .XXX: ± 0.005 ANGULAR: .X°: 1° .XX°: 0.5° BREAK EDGES: .005 - .020 FILLETS: .005 - .020 SURFACE FINISH: GEOMETRIC TOLERANCING PER: ASME Y14.5 -2009		DRAWN	KC	11/29/22		TITLE: BATTERY TO RADIO CONNECTION WITH RAW BATTERY VOLTAGE PIG-TAIL CABLE						
		CHECKED	MOB	11/29/22								
MATERIAL: SEE DRAWING NOTES FINISH: SEE DRAWING NOTES		COMMENTS:	<div>PROPRIETARY AND CONFIDENTIAL</div> <div>THE INFORMATION CONTAINED IN THIS DRAWING IS THE SOLE PROPERTY OF SUPPLYNET, INC. ANY REPRODUCTION IN PART OR AS A WHOLE WITHOUT THE WRITTEN PERMISSION OF SUPPLYNET INC. IS PROHIBITED.</div>							SIZE	DWG. NO.	REV
		DO NOT SCALE DRAWING								<div>CAGE CODE: 1HJX9</div>	<div>B</div>	<div>SN-832</div>
					SCALE: NA	WEIGHT:	SHEET 1 OF 2					



BILL OF MATERIALS			
ITEM NO.	PART NO.	QTY	NAME/DESCRIPTION
1	FE-411-02A2	1	CONNECTOR HOUSING
2	1116-01-101-HOLES	1	MBITR CONNECTOR HOUSING & BACK COVER
3	SN-1034-8MM	1	8MM THREADED SPACER, 2 TABS
4	571-063-R70BT	2	RED TEFLON COATED BUNA O-RING
5	STEEL-TAB	2	GND TABS
6	1116-01-105-ASSY	1	3 POGO PIN ASSEMBLY REV. E
6.1	500626-000	3	POGO PIN
7	1116-01-106	1	GROUND BAR REV. C
8	1116-01-103	1	THUMB LOCK REV. B
9	1116-01-104	1	ROCKER ARM
10	C0120-014-0500-M	1	SPRING
11	90730A005*	2	4-40 HEX NUT
12	67566521*	1	18-8, PHILLIPS FLAT HEAD SCREW, 4-40 X 3/8"
13	91099A160*	2	18-8, PHILLIPS FLAT HEAD SCREW, 4-40 X 1/2"
14	91099A169*	1	18-8, PHILLIPS FLAT HEAD SCREW, 4-40 X 5/8"
15	90033A160*	3	#6 X 1" FLAT HEAD SCREW, PHILLIPS DRIVE
16	223C-V03A	74"	CABLE: 3C, AWG 22, PVC JACKET, .197" DIA.

*OR EQUIVALENT

PART NUMBER: SN-832



TITLE: BATTERY TO RADIO
CONNECTION WITH RAW
BATTERY VOLTAGE
PIG-TAIL CABLE

PROPRIETARY AND CONFIDENTIAL
THE INFORMATION CONTAINED IN THIS
DRAWING IS THE SOLE PROPERTY OF
SUPPLYNET, INC. ANY REPRODUCTION
IN PART OR AS A WHOLE WITHOUT THE
WRITTEN PERMISSION OF SUPPLYNET INC.
IS PROHIBITED.

CAGE CODE: 1HJX9

SIZE B	DWG. NO. SN-832	REV F
------------------	---------------------------	-----------------

SCALE: NA WEIGHT: SHEET 2 OF 2