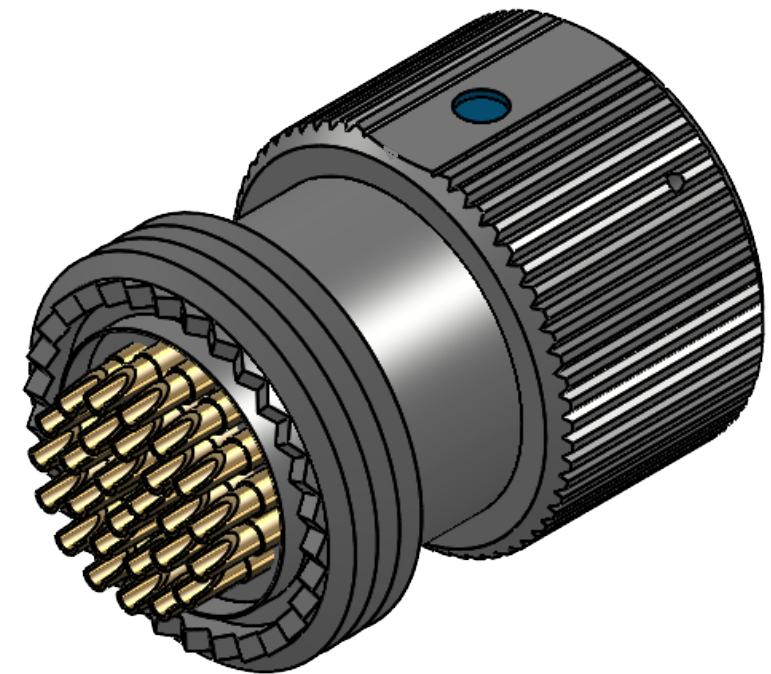


**SOLDER CONNECTIONS**



- NOTES:
1. Description: 27 Pin Circular Connector
  2. Operating Temperature Range: -55C to +85C
  3. Air Pressure: 2.5 psi
  4. Water Immersion: 48 Hr. @ 6 ft.
  5. Durability: 3000 Cycles, Mate/Un-mate
  6. Contact Spring force: 0.5 to 0.6 LBS
  7. Number of Positions: 27
  8. Contacts: Copper Alloy
  9. Insulator: Diallyl Phthalate
  10. Connector: Stainless Steel
  11. Contact Finish: 30μ" Gold per MIL-G-45204 Over 100μ" Nickel
  12. Operating Voltage: 60V Maximum
  13. Current Rating: .05A Maximum
  14. Insulation Resistance: 1000MΩ
  15. Meets MIL-STD-202, MIL-STD-810F, MIL-STD-1344A and MIL-STD-220
  16. Pin inside Diameter: 0.05 Inches
  17. Permanently mark on surface indicated the following information:
    - CONN-MC4127 MMY 1HJX9 (MM = Month, YY = Year).
    - Marking to be .090 high and use 1 part epoxy ink that meets the requirements of CID A-A-56032D Type I & II.

REVISIONS			
REV	DESCRIPTION	DATE	ENG
B	REVISED. SEE DCN	03/16/2015	TC
C	MODLE UPDATED; KEYWAYS ADJUSTED, PINS LABELED	08/08/2025	CWA

CROSS REF. HARRIS  
PART # J69-0016-002

REF. NUMBER: SN0356

**SupplyNet** DESIGN  
ENGINEERING  
MANUFACTURING

TITLE:  
**CONN-4127 DETAILED  
PIN LAYOUT**

SIZE <b>B</b>	DWG. NO. <b>CONN-MC4127</b>	REV <b>C</b>
------------------	--------------------------------	-----------------

SCALE: NA	WEIGHT:	SHEET 1 OF 1
-----------	---------	--------------

UNLESS OTHERWISE SPECIFIED:			
DIMENSIONS ARE IN: INCHES	DRAWN	NAME	DATE
TOLERANCES: .XX: ± 0.03	TC	TC	03/16/15
.XXX: ± 0.005	CHECKED	RJB	03/16/15
ANGULAR: .X°: 1°	COMMENTS:		
.XX": 0.5°			
BREAK EDGES: .005 - .020	<b>PROPRIETARY AND CONFIDENTIAL</b> THE INFORMATION CONTAINED IN THIS DRAWING IS THE SOLE PROPERTY OF SUPPLYNET, INC. ANY REPRODUCTION IN PART OR AS A WHOLE WITHOUT THE WRITTEN PERMISSION OF SUPPLYNET INC. IS PROHIBITED.		
FILLET: .005 - .020			
SURFACE FINISH:			
GEOMETRIC TOLERANCING PER: ASME Y14.5 -2009			
MATERIAL: SEE DRAWING NOTES	<b>CAGE CODE: 1HJX9</b>		
FINISH: SEE DRAWING NOTES			
DO NOT SCALE DRAWING			