

WHEN WIRING TO THE PCB (PART NUMBER SN0008-1) USE THE TABLE BELOW TO TO INSURE PROPER CONNECTION AND FUNCTION.

CONNECTOR	SIGNAL DESCRIPTION	LOCATION	WIRE GAGE	WIRE COLOR
J1-1	SECTION A (V-)	E1	AWG 16	BLACK
J1-2	SECTION B (V-)	E2	AWG 16	BLACK / WHITE
J1-3	SECTION A (V-)	E3	AWG 16	NC
J1-4	SECTION A (V+)	E4	AWG 16	RED
J1-5	SECTION B (V+)	E5	AWG 16	RED / WHITE
J1-6	CHARGE ENABLE (-)	E11	AWG 22	BLUE
W1	SECTION A - CLOCK	E6	AWG 22	BROWN
W2	SECTION A - DATA	E7	AWG 22	ORANGE
W3,6	CHARGE ENABLE (+)	E8	AWG 22	YELLOW
W4	SECTION B - CLOCK	E9	AWG 22	VIOLET
W5	SECTION B - DATA	E10	AWG 22	GRAY

PART NUMBER SN0019 GENERAL BILL OF MATERIALS				
ITEM	QTY / ASSY	PART NUMBER	NAME	COMMENTS
1	1	SN0017-1,-2,-3, or -4	CONNECTOR PIN ASSEMBLY	VARIOUS KEYWAY AND PIN CONFIGURATIONS
2	0-1	SN0008-1	PRINTED CIRCUIT BOARD	SOLDERED PER IPC-J-STD-001
3	0-6	SN0009-1	POGO PIN	SPRING LOADED CONNECTOR
4	0-1	SN0010-1	ENCLOSURE	PROVIDED OR OMITTED
5	0-4	SN0012-1	MOUNTING SCREW	PROVIDED OR OMITTED
6	0-1	SN0011-1	GROMMET	PROVIDED OR OMITTED
7	0-1	SN0013-1	VELCRO STRAP	PROVIDED OR OMITTED
8	0-2	SN0015-1	STRAP MOUNTING WASHER	PROVIDED OR OMITTED
9	0-2	SN0014-1	STRAP MOUNTING SCREW	PROVIDED OR OMITTED
10	0-6	SN0018-1	CONTACT PIN CAP	NOT SHOWN. TYPICALLY USED ON OPEN PINS

**PROPRIETARY AND CONFIDENTIAL**  
THE INFORMATION CONTAINED IN THIS DRAWING IS THE SOLE PROPERTY OF SUPPLYNET, INC. ANY REPRODUCTION IN PART OR AS A WHOLE WITHOUT THE WRITTEN PERMISSION OF SUPPLYNET INC. IS PROHIBITED.

CAGE CODE: 1HJX9

PART NUMBER: SN0019-X

**SupplyNet** | DESIGN  
ENGINEERING  
MANUFACTURING

TITLE:

**CONNECTOR  
ASSEMBLY**

SIZE

**B**

DWG. NO.

**SN0019**

REV

**D**

SCALE: NA

WEIGHT:

SHEET 2 OF 4

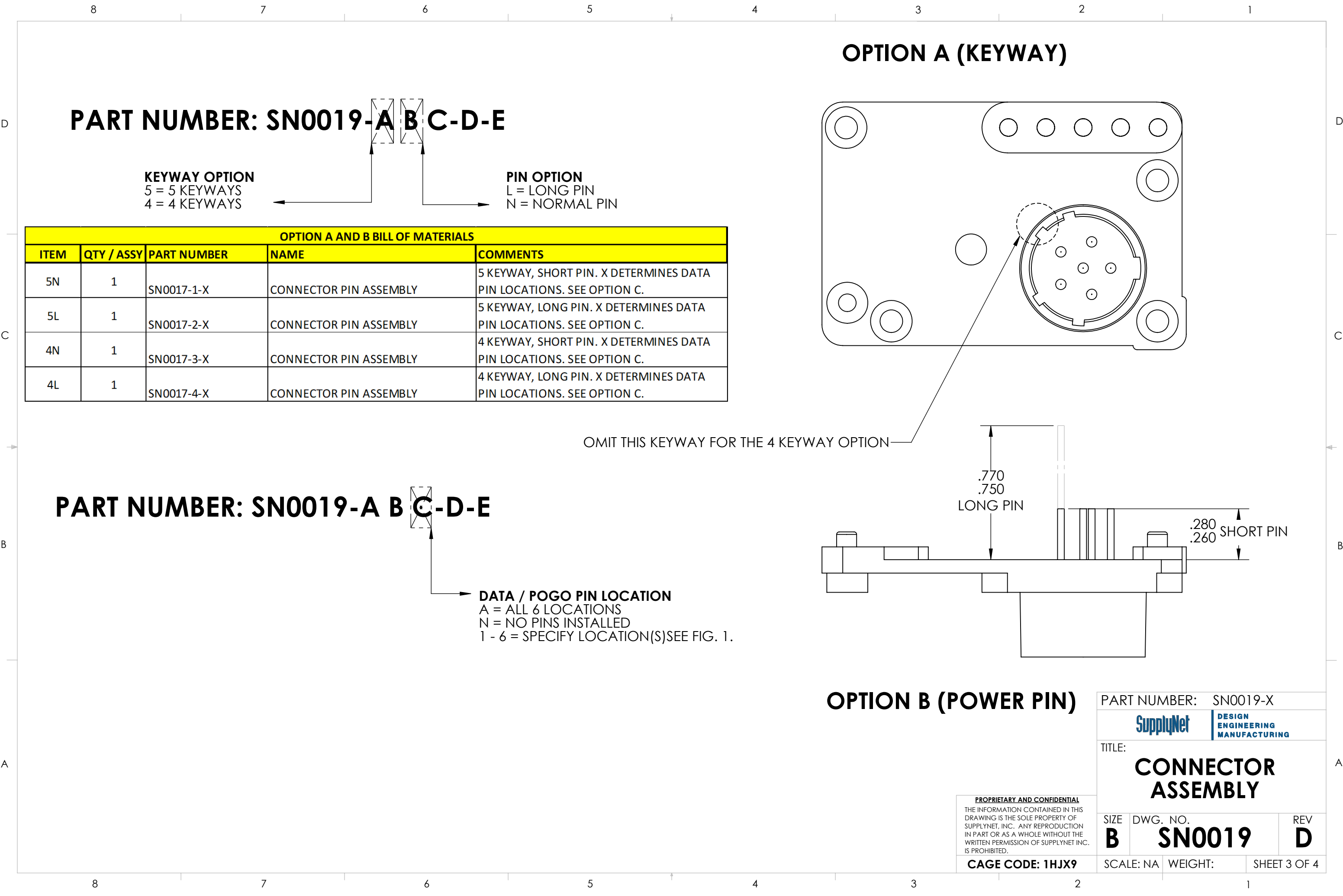


FIGURE 2. ENCLOSURE AND STRAP BILL OF MATERIALS

ENCLOSURE AND STRAP BILL OF MATERIALS			
ITEM	QTY / ASSY	PART NUMBER	NAME
4	1	SN0010-1	ENCLOSURE
6	1	SN0011-1	GROMMET
7	1	SN0013-1	VELCRO STRAP
8	2	SN0015-1	STRAP MOUNTING WASHER
9	2	SN0014-1	STRAP MOUNTING SCREW

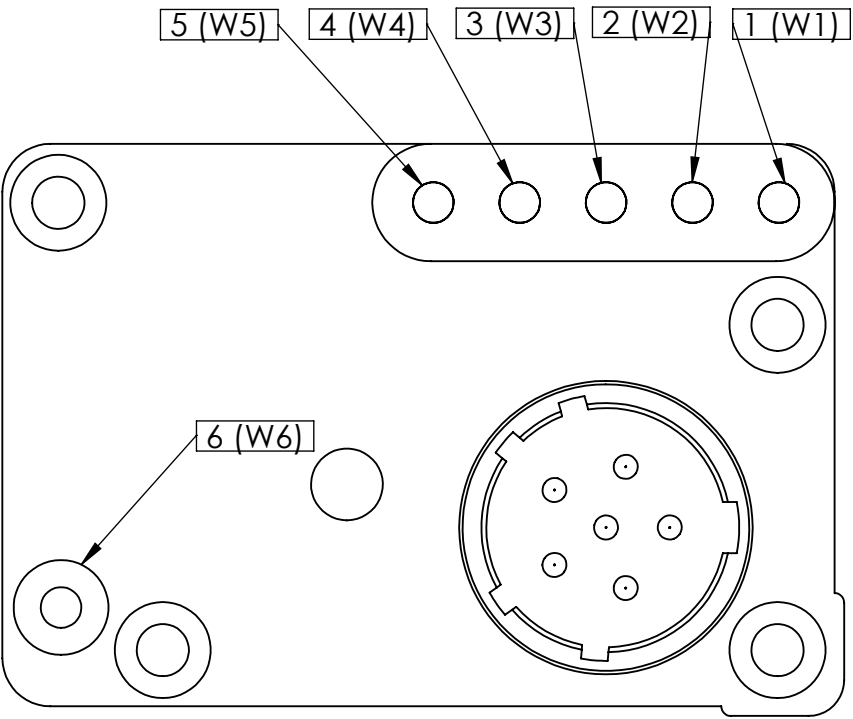
PART NUMBER: SN0019-A B C-D-E

PRINTED CIRCUIT BOARD OPTION

0 = NOT PROVIDED  
1 = PROVIDED, NOT SOLDERED  
2 = CUSTOM PCB PN SN0225 (PROVIDED NOT SOLDERED)  
T = PROVIDED, THREADED

ENCLOSURE & STRAP (SN0011-1 (GROMMET) SUPPLIED WITH ENCLOSURE).  
0 = OMITTED  
1 = PROVIDED, NOT FASTENED (SEE FIG 2 FOR ENCLOSURE & STRAP BOM).  
2 = STRAP AND STRAP HARDWARE.  
3 = STRAP ONLY  
4 = ENCLOSURE AND GROMMET ONLY

FIGURE 1. CONTACT PIN LOCATIONS



PART NUMBER EXAMPLE: SN0019-5N1356-1-1

**PART NUMBER DESCRIPTION:** THE ABOVE PART NUMBER IS A 5 KEYWAY / NORMAL PIN CONFIGURATION WITH THE PCB PROVIDED. IT ALSO HAS CONTACT PINS IN LOCATIONS 1, 3, 5, AND 6. THE ENCLOSURE AND STRAP ARE PROVIDED WITH THE REQUIRED HARDWARE. THE PART HAS CAPS PROVIDED.

PART NUMBER: SN0019-X		
<div>SupplyNet</div> <div>DESIGN ENGINEERING MANUFACTURING</div>		
TITLE: <b>CONNECTOR ASSEMBLY</b>		
SIZE <b>B</b>	DWG. NO. <b>SN0019</b>	REV <b>D</b>
SCALE: NA	WEIGHT:	SHEET 4 OF 4

**PROPRIETARY AND CONFIDENTIAL**  
THE INFORMATION CONTAINED IN THIS  
DRAWING IS THE SOLE PROPERTY OF  
SUPPLYNET, INC. ANY REPRODUCTION  
IN PART OR AS A WHOLE WITHOUT THE  
WRITTEN PERMISSION OF SUPPLYNET INC.  
IS PROHIBITED.  
**CAGE CODE: 1HJX9**