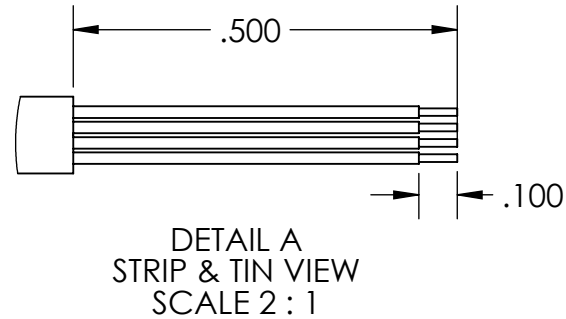
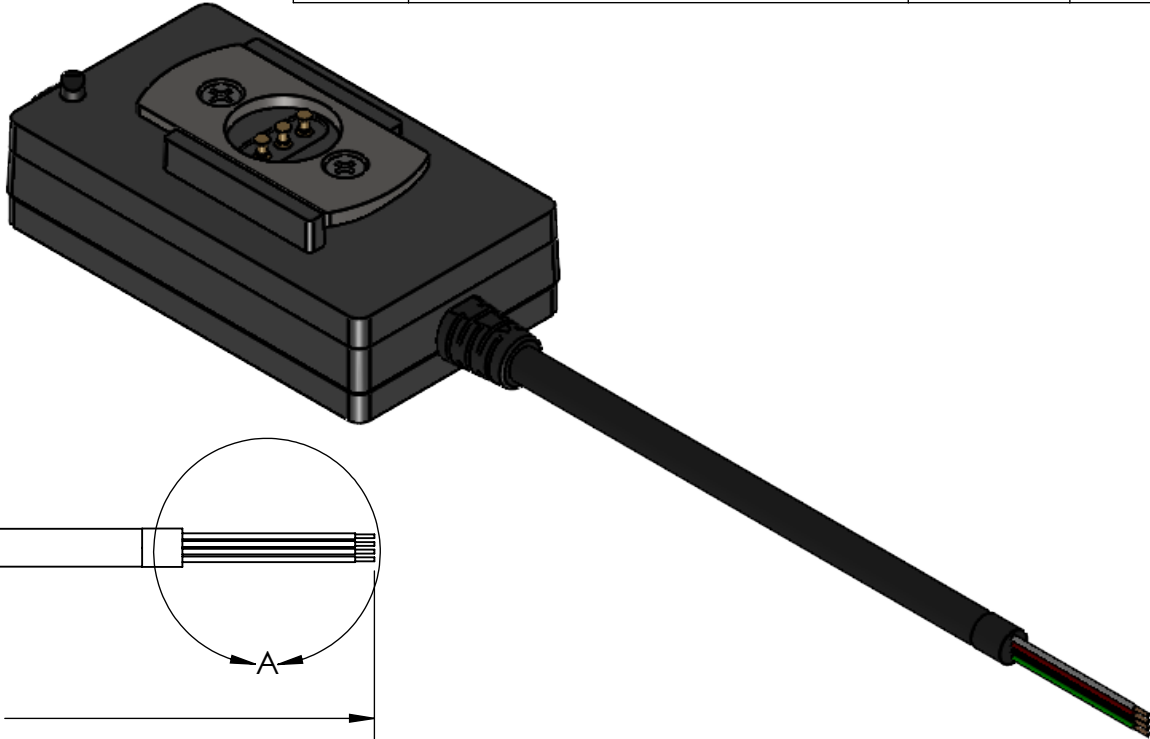
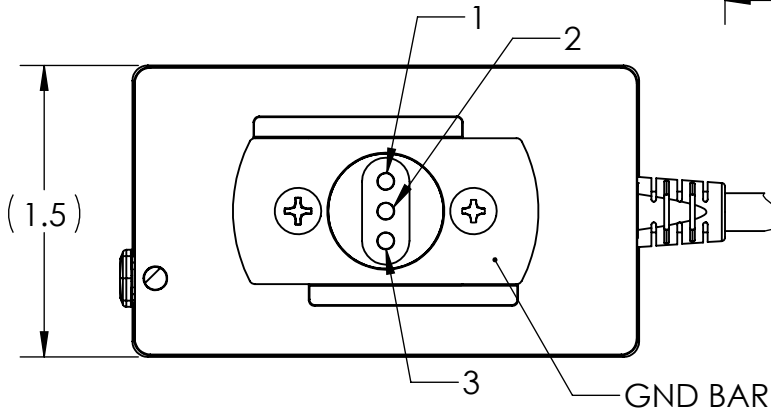
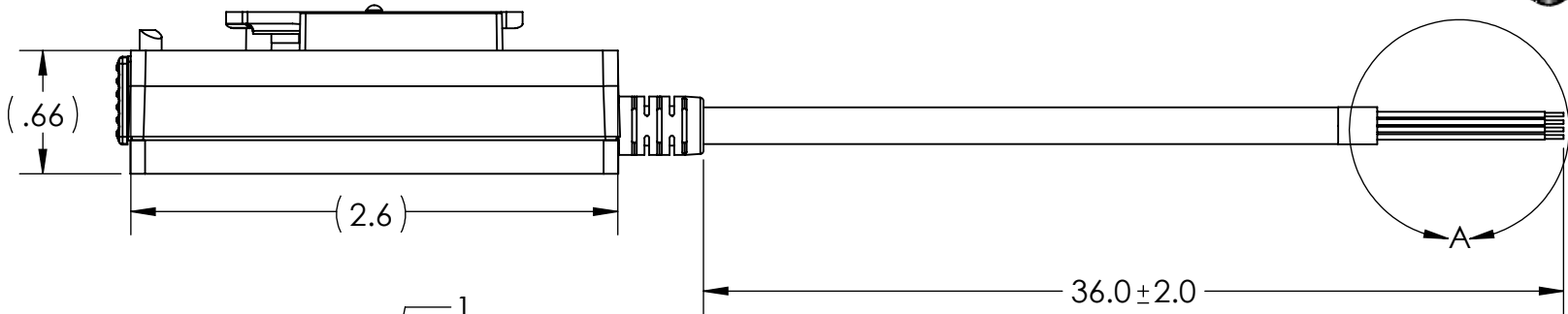
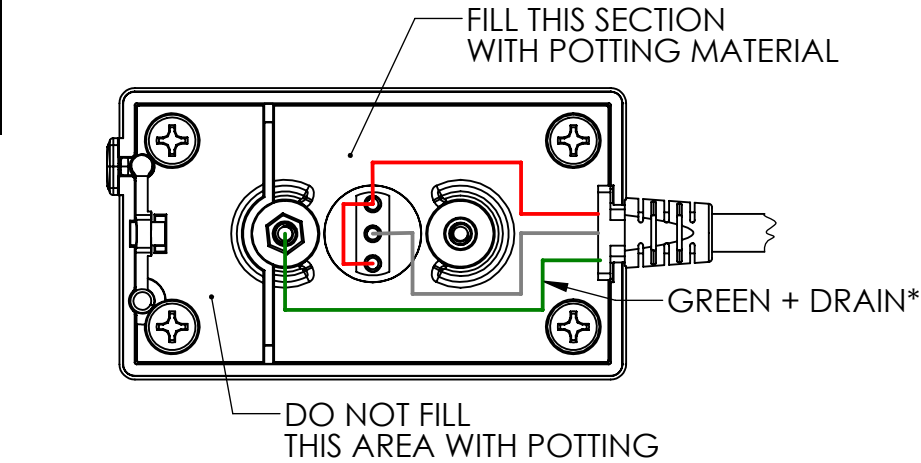


| TABLE 1: WIRE RUN LIST | | |
|------------------------|----------------|-------------|
| P1 | WIRE COLOR | SIGNAL |
| 1, 3 | RED | +V_BATT OUT |
| 2 | WHITE | BATT_DATA |
| GND BAR | GREEN + DRAIN* | BATT_RTN |

*EXPOSED DRAIN WIRE
MUST BE COVERED IN SHRINK BOOT

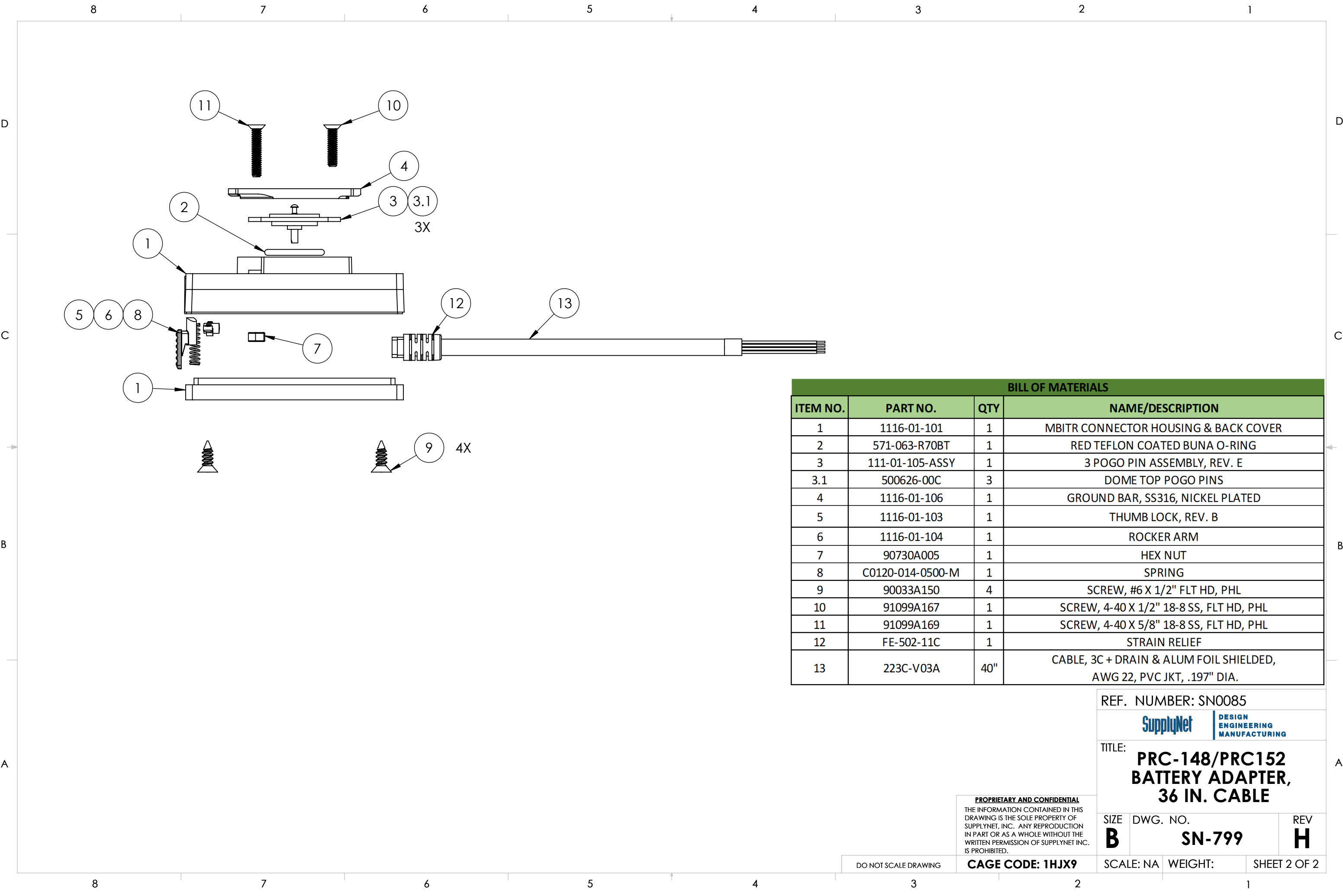


| REVISIONS | | | |
|-----------|--------------------------------|------------|-----|
| REV. | DESCRIPTION | DATE | ENG |
| F | ADDED LABEL | 07/25/2025 | CWA |
| G | UPDATED TABLE 1: WIRE RUN LIST | 11/05/2025 | CWA |
| H | UPDATED TABLE 1: WIRE RUN LIST | 11/19/2025 | CWA |

BOM ON SHEET 2

- NOTES:
- WIRING SHALL BE DONE IN ACCORDANCE WITH TABLE 1 WIRE RUN LIST.
 - PACKAGING REQUIREMENTS:
 - EACH COMPLETED ASSEMBLY SHALL BE PACKAGED IN A ZIP POLYBAG.
 - CONNECTOR(S) SHALL BE PACKAGED TO PREVENT DAMAGE DURING SHIPPING. BUBBLE WRAP OR PROTECTIVE COVER MUST BE USED.
 - POLYBAG SHALL BE MARKED WITH SUPPLYNET LOGO, PRODUCT QR CODE, PART NUMBER, CAGE CODE, AND LOT NO, PER SN-STD-LBL REQUIREMENTS.
 - WORKMANSHIP REQUIREMENTS:
 - MANUFACTURE TO IAW/WHMA A-620 CLASS 2 REQUIREMENTS.
 - SOLDERING SHALL BE COMPLIANT WITH IAW J-STD-001 AS APPLICABLE.
 - CONNECTOR(S) AND WIRE SHALL BE FREE FROM ANY SCRATCHES, CHIPS, AND DEFECTS.
 - INSPECTION REQUIREMENTS:
 - EACH COMPLETED ASSEMBLY TO BE 100% TESTED FOR SHORTS, CONTINUITY, AND JACKET RESISTANCE (250V @100MOHM MIN.)
 - INSPECT TO IPC/WHMA A-620 CLASS 2 REQUIREMENTS.

| | | | | | | |
|---|--|----------|-----------|---|--|--|
| UNLESS OTHERWISE SPECIFIED: | | | | REF. NUMBER: SN0085 | | |
| DIMENSIONS ARE IN: INCHES TOLERANCES: .XX: ± 0.03 .XXX: ± 0.005 ANGULAR: .X°: 1° .XX°: 0.5° BREAK EDGES: .005 - .020 FILLETS: .005 - .020 SUFACE FINISH: GEOMETRIC TOLERANCING PER: ASME Y14.5 -2009 MATERIAL: SEE DRAWING NOTES FINISH: SEE DRAWING NOTES DO NOT SCALE DRAWING | DRAWN | TC | 1/22/2020 | | | |
| | CHECKED | RJB | 1/22/2020 | | | |
| | COMMENTS: | | | TITLE: | | |
| | PROPRIETARY AND CONFIDENTIAL THE INFORMATION CONTAINED IN THIS DRAWING IS THE SOLE PROPERTY OF SUPPLYNET, INC. ANY REPRODUCTION IN PART OR AS A WHOLE WITHOUT THE WRITTEN PERMISSION OF SUPPLYNET INC. IS PROHIBITED. | | | PRC-148/PRC-152 BATTERY ADAPTER, 36 IN. CABLE | | |
| SIZE | | DWG. NO. | | REV | | |
| B | | SN-799 | | H | | |
| SCALE: NA | | WEIGHT: | | SHEET 1 OF 2 | | |



| BILL OF MATERIALS | | | |
|-------------------|------------------|-----|---|
| ITEM NO. | PART NO. | QTY | NAME/DESCRIPTION |
| 1 | 1116-01-101 | 1 | MBITR CONNECTOR HOUSING & BACK COVER |
| 2 | 571-063-R70BT | 1 | RED TEFLON COATED BUNA O-RING |
| 3 | 111-01-105-ASSY | 1 | 3 POGO PIN ASSEMBLY, REV. E |
| 3.1 | 500626-00C | 3 | DOME TOP POGO PINS |
| 4 | 1116-01-106 | 1 | GROUND BAR, SS316, NICKEL PLATED |
| 5 | 1116-01-103 | 1 | THUMB LOCK, REV. B |
| 6 | 1116-01-104 | 1 | ROCKER ARM |
| 7 | 90730A005 | 1 | HEX NUT |
| 8 | C0120-014-0500-M | 1 | SPRING |
| 9 | 90033A150 | 4 | SCREW, #6 X 1/2" FLT HD, PHL |
| 10 | 91099A167 | 1 | SCREW, 4-40 X 1/2" 18-8 SS, FLT HD, PHL |
| 11 | 91099A169 | 1 | SCREW, 4-40 X 5/8" 18-8 SS, FLT HD, PHL |
| 12 | FE-502-11C | 1 | STRAIN RELIEF |
| 13 | 223C-V03A | 40" | CABLE, 3C + DRAIN & ALUM FOIL SHIELDED, AWG 22, PVC JKT, .197" DIA. |

REF. NUMBER: SN0085



TITLE:
**PRC-148/PRC152
BATTERY ADAPTER,
36 IN. CABLE**

PROPRIETARY AND CONFIDENTIAL
THE INFORMATION CONTAINED IN THIS
DRAWING IS THE SOLE PROPERTY OF
SUPPLYNET, INC. ANY REPRODUCTION
IN PART OR AS A WHOLE WITHOUT THE
WRITTEN PERMISSION OF SUPPLYNET INC.
IS PROHIBITED.

| | | |
|----------|---------------|----------|
| SIZE | DWG. NO. | REV |
| B | SN-799 | H |

DO NOT SCALE DRAWING

CAGE CODE: 1HJX9

SCALE: NA WEIGHT: SHEET 2 OF 2