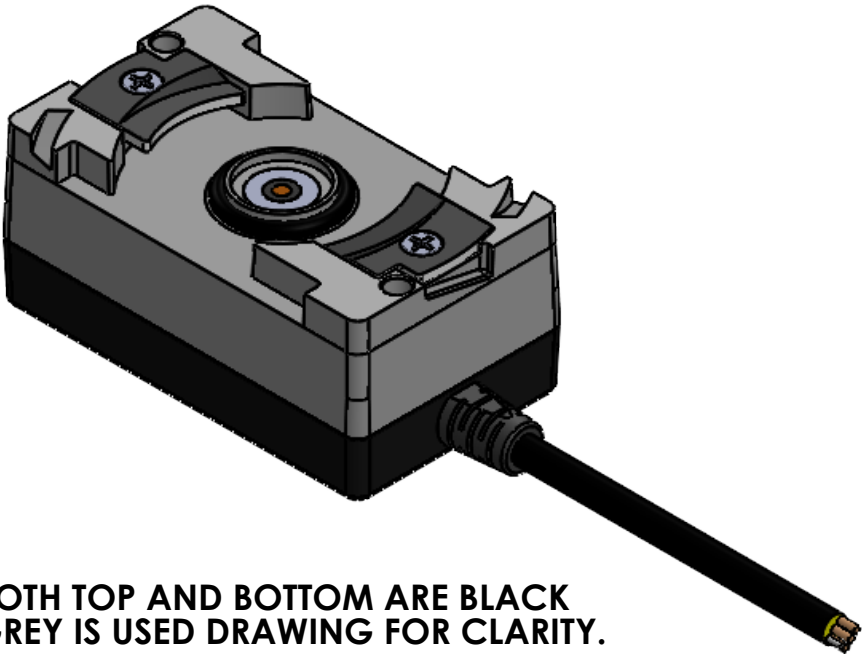


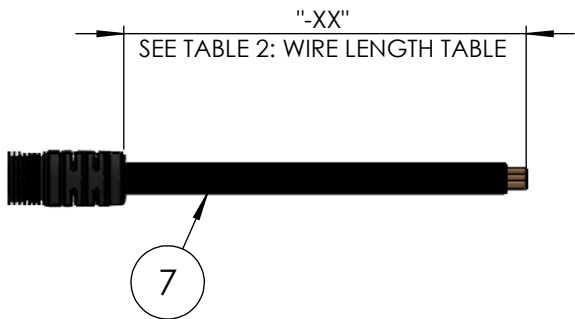
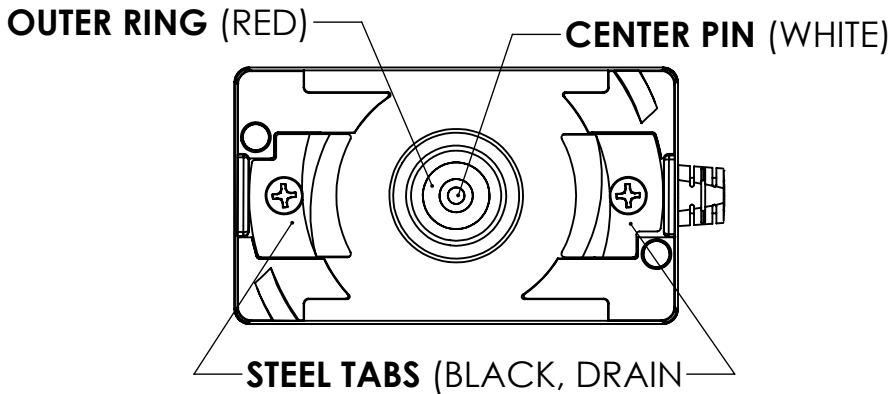
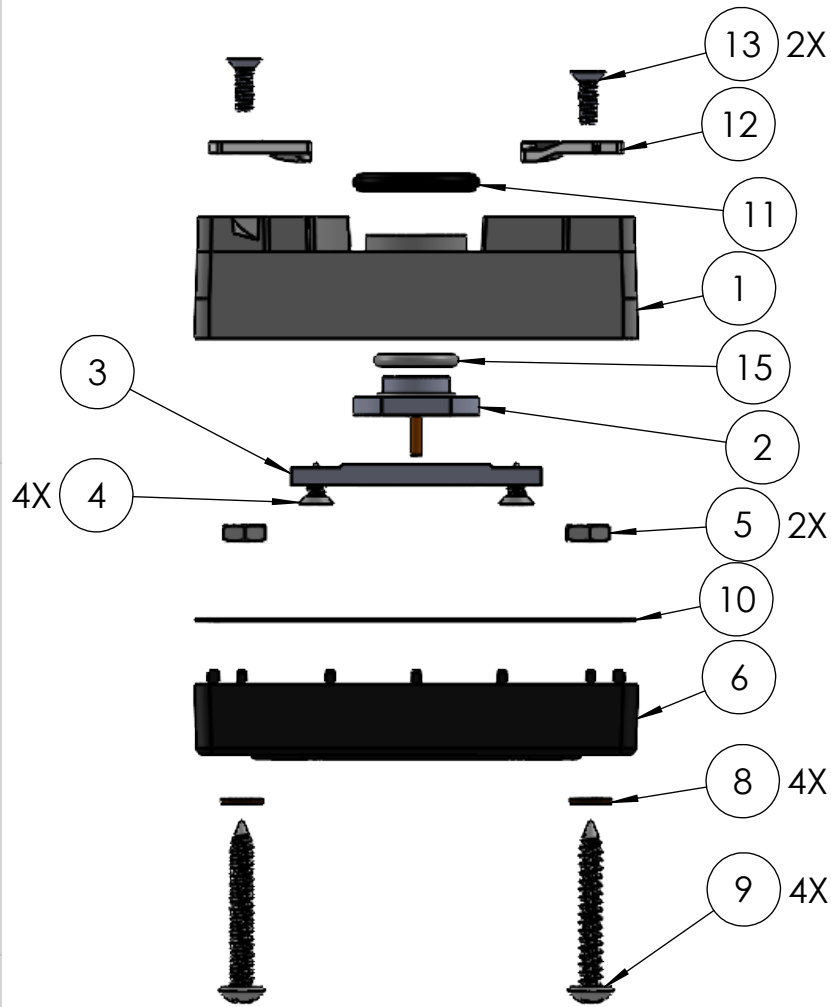
TABLE 1: WIRE RUN LIST	
CONN-PRC163	WIRE COLOR
CENTER PIN	WHITE
OUTER RING	RED
STEEL TABS	BLACK, DRAIN

TABLE 2: WIRE LENGTH CHART		
PART NUMBER & PART MARKING	"-XX" DIMENSION (INCHES)	TOLERANCE (INCHES)
CONN-PRC163-2-01	12	+1.0", -0.0"
CONN-PRC163-2-02	24	+2.0", -0.0"
CONN-PRC163-2-03	36	+4.0", -0.0"
CONN-PRC163-2-06	72	+8.0", -0.0"
CONN-PRC163-2-08	96	+8.0", -0.0"

REVISIONS			
REV	DESCRIPTION	DATE	ENG
A	INITIAL RELEASE	08/26/2025	CWA
B	ADDED WIRE RUN LIST, UPDATED BOM	10/03/2025	CWA
C	UPDATED TABLE 1: WIRE RUN LIST	12/19/2025	CWA



BOTH TOP AND BOTTOM ARE BLACK  
GREY IS USED DRAWING FOR CLARITY.



- NOTES:
- WIRING SHALL BE DONE IN ACCORDANCE WITH TABLE 1 WIRE RUN LIST.
  - PACKAGING REQUIREMENTS:
    - EACH COMPLETED ASSEMBLY SHALL BE PACKAGED IN A ZIP POLYBAG.
    - CONNECTOR(S) SHALL BE PACKAGED TO PREVENT DAMAGE DURING SHIPPING. BUBBLE WRAP OR PROTECTIVE COVER MUST BE USED.
    - POLYBAG SHALL BE MARKED WITH SUPPLYNET LOGO, PRODUCT QR CODE, PART NUMBER, CAGE CODE, AND LOT NO, PER SN-STD-LBL REQUIREMENTS.
  - WORKMANSHIP REQUIREMENTS:
    - MANUFACTURE TO IAW/WHMA A-620 CLASS 2 REQUIREMENTS.
    - SOLDERING SHALL BE COMPLIANT WITH IAW J-STD-001 AS APPLICABLE.
    - CONNECTOR(S) AND WIRE SHALL BE FREE FROM ANY SCRATCHES, CHIPS, AND DEFECTS.
  - INSPECTION REQUIREMENTS:
    - EACH COMPLETED ASSEMBLY TO BE 100% TESTED FOR SHORTS, CONTINUITY, AND JACKET RESISTANCE (250V @100MOHM MIN.)
    - INSPECT TO IPC/WHMA A-620 CLASS 2 REQUIREMENTS.

BILL OF MATERIALS				
ITEM NO.	PART NO	QTY	NAME/DESCRIPTION	SUPPLIER CODE
1	SN-PRC-163-CONN	1	CONNECTOR HOUSING	SN
2	SN-PRC-163-CIRC-ASSY	1	CIRCULAR CONTACT ASSEMBLY, INCLUDES PINS AND O-RING	SN
3	SN-PRC-163-3	1	PLASTIC BRACKET/INSULATOR FOR PRC-163-ASSY	SN
4	90198A100	4	#4 1/4" SCREWS FOR SN-SMALL PCB	SN
5	91831A005	2	4-40 HEX NUT	SN
6	SN-PRC-163-4.1	1	DEEP COVER, 8MM THREADED EXIT	SN
7	SN-359-T3	1	JAVA DUAL ENDED 3C 20 AWG THREADED STRAIN RELIEF CABLE	SN
8	SN-PRC-163-6	4	GASKET FOR TOP COVER SCREWS	SN
9	90935A153	4	BLACK OXIDE STEEL ROUNDED HEAD SCREW, #6 SCREW SIZE, 1" LENGTH	SN
10	SN-PRC-163-5	1	GASKET FOR CASE ON PRC-163 .549" 70A ASTM D2000	SN
11	9452K25	1	LARGE O-RING FOR AN/PRC-163 .364" 70A ASTM D2000 INCLUDED IN ITEM 2	SN
12	STEEL-TAB-163	2	STAINLESS STEEL GND TAB	SN
13	91099A167	2	4-40 1/2" SCREW 18-8 STAINLESS, FLATHEAD PHILLIPS	SN
14	PRC-163-4	1	JUMPER WIRE WITH RING TERMINALS	SCS
15	9452K21	1	SMALL O-RING FOR AN/PRC-163 .264" 70A ASTM D2000 INCLUDED IN ITEM 2	SN

UNLESS OTHERWISE SPECIFIED:  
DIMENSIONS ARE IN: INCHES  
TOLERANCES: .XX: ± 0.03  
.XXX: ± 0.005  
ANGULAR: .X°: 1°  
.XX°: 0.5°  
BREAK EDGES: .005 - .020  
FILLET: .005 - .020  
SURFACE FINISH:

GEOMETRIC TOLERANCING  
PER: ASME Y14.5 -2009  
MATERIAL: SEE DRAWING NOTES  
FINISH: SEE DRAWING NOTES

DO NOT SCALE DRAWING

	NAME	DATE
DRAWN	TC	6/24/19
CHECKED	RB	6/24/19
COMMENTS:		
<b><u>PROPRIETARY AND CONFIDENTIAL</u></b> THE INFORMATION CONTAINED IN THIS DRAWING IS THE SOLE PROPERTY OF SUPPLYNET, INC. ANY REPRODUCTION IN PART OR AS A WHOLE WITHOUT THE WRITTEN PERMISSION OF SUPPLYNET INC. IS PROHIBITED.		
<b>CAGE CODE: 1HJX9</b>		

REF. NUMBER: SN0609



TITLE:  
**PRC-163 UNREGULATED  
12VDC OUTPUT  
CABLE W/ DATA**

SIZE	DWG. NO.	REV
<b>B</b>	<b>CONN-PRC163-2-XX</b>	<b>C</b>

SCALE: NA WEIGHT: SHEET 1 OF 1