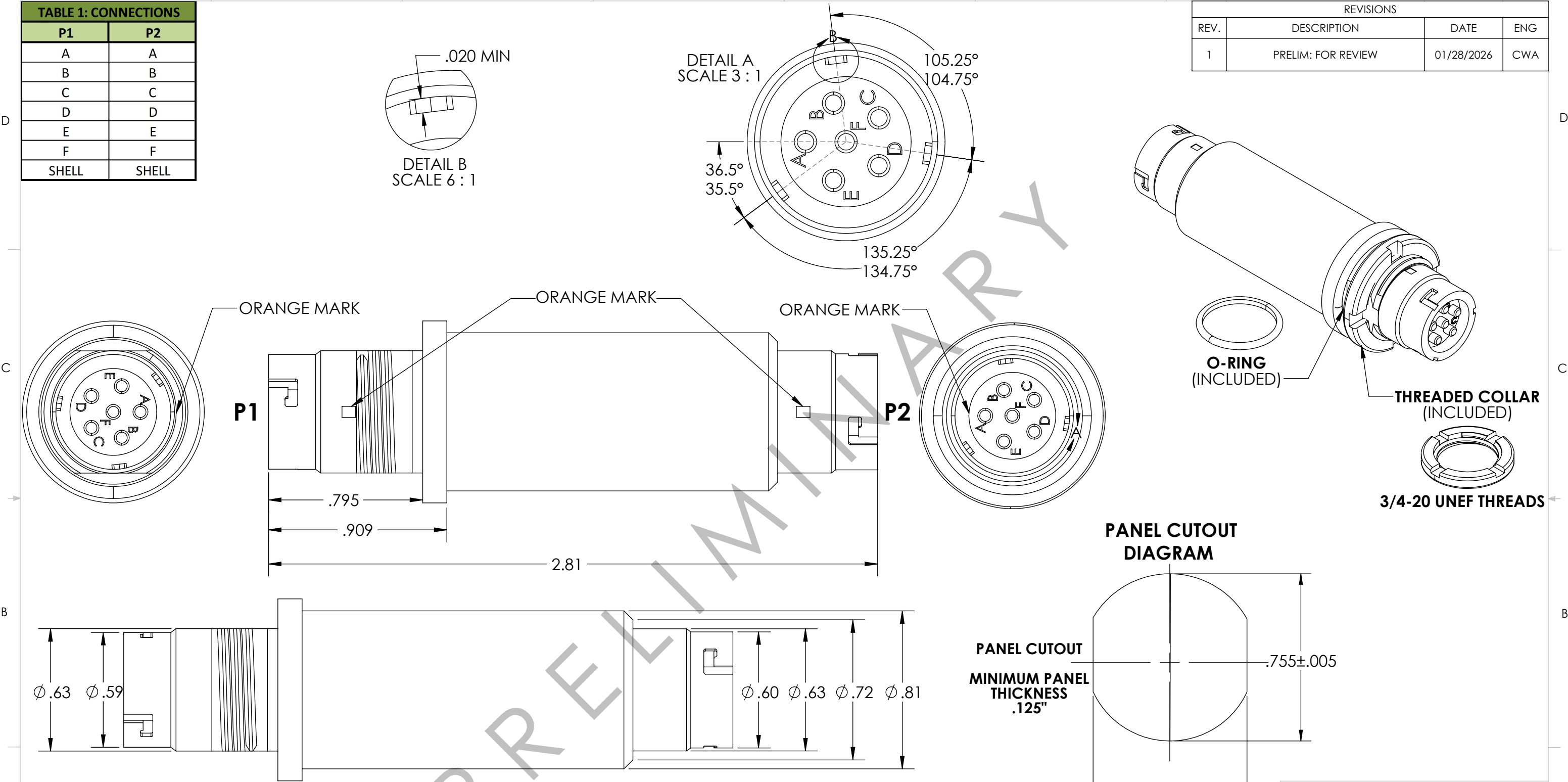


TABLE 1: CONNECTIONS	
P1	P2
A	A
B	B
C	C
D	D
E	E
F	F
SHELL	SHELL

REVISIONS			
REV.	DESCRIPTION	DATE	ENG
1	PRELIM: FOR REVIEW	01/28/2026	CWA



NOTES:

1. RoHS COMPLIANT PRODUCT
2. MATERIALS:
 - SHELL- TYPE 303 STAINLESS STEEL, COND. A
 - CONTACT PINS- BRASS CDA 360- GOLD PLATING OVER ELECTROLESS NICKEL
 - SPANNER NUT- TYPE 303 STAINLESS STEEL, COND. A
3. CONNECTOR IS DESIGNED TO ELECTRICALLY PASS SIGNALS STRAIGHT THRU. SEE TABLE 1.
4. PACKAGING REQUIREMENTS:
 - A. EACH COMPLETED ASSEMBLY SHALL BE PACKAGED IN A ZIP POLYBAG.
 - B. CONNECTOR SHALL BE PACKAGED TO PREVENT DAMAGE DURING SHIPPING. BUBBLE WRAP OR PROTECTIVE COVER MUST BE USED.
 - C. POLYBAG SHALL BE MARKED WITH SUPPLYNET LOGO,

UNLESS OTHERWISE SPECIFIED:		NAME	DATE	<div>SupplyNet</div> <div>DESIGN ENGINEERING MANUFACTURING</div>	
DIMENSIONS ARE IN: INCHES		DRAWN	MOB	2/23/2024	TITLE: DUAL MALE PANEL MOUNT (SIGNALS CROSS) EXTENDED LENGTH
TOLERANCES: .XX: ± 0.03 .XXX: ± 0.005		CHECKED	MOB	2/23/2024	
ANGULAR: .X*: 1° .XX*: 0.5°		COMMENTS:			
BREAK EDGES: .005 - .020 FILLET: .005 - .020 SURFACE FINISH:					
GEOMETRIC TOLERANCING PER: ASME Y14.5 -2009		PROPRIETARY AND CONFIDENTIAL THE INFORMATION CONTAINED IN THIS DRAWING IS THE SOLE PROPERTY OF SUPPLYNET, INC. ANY REPRODUCTION IN PART OR AS A WHOLE WITHOUT THE WRITTEN PERMISSION OF SUPPLYNET INC. IS PROHIBITED.			
MATERIAL: SEE DRAWING NOTES		SIZE	DWG. NO.		REV
FINISH: SEE DRAWING NOTES		B	SN-283FTX		1
DO NOT SCALE DRAWING		CAGE CODE: 1HJX9		SCALE: NA	WEIGHT: SHEET 1 OF 1