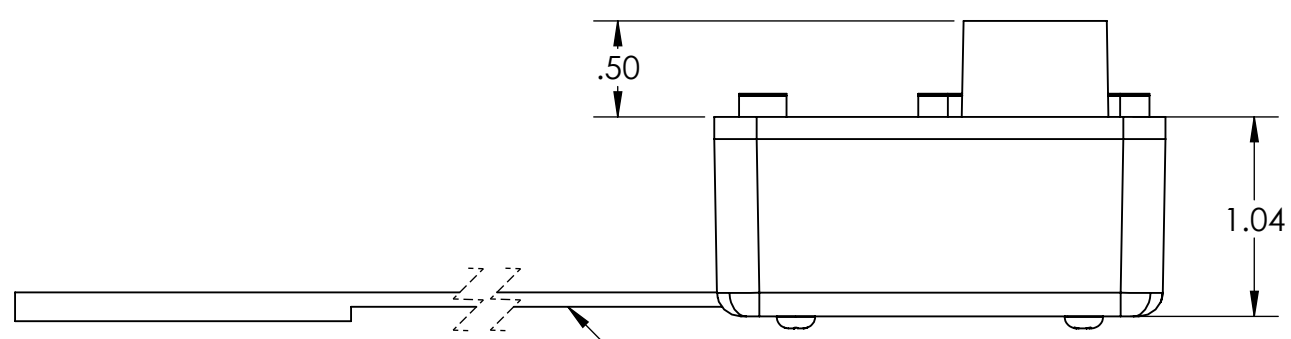
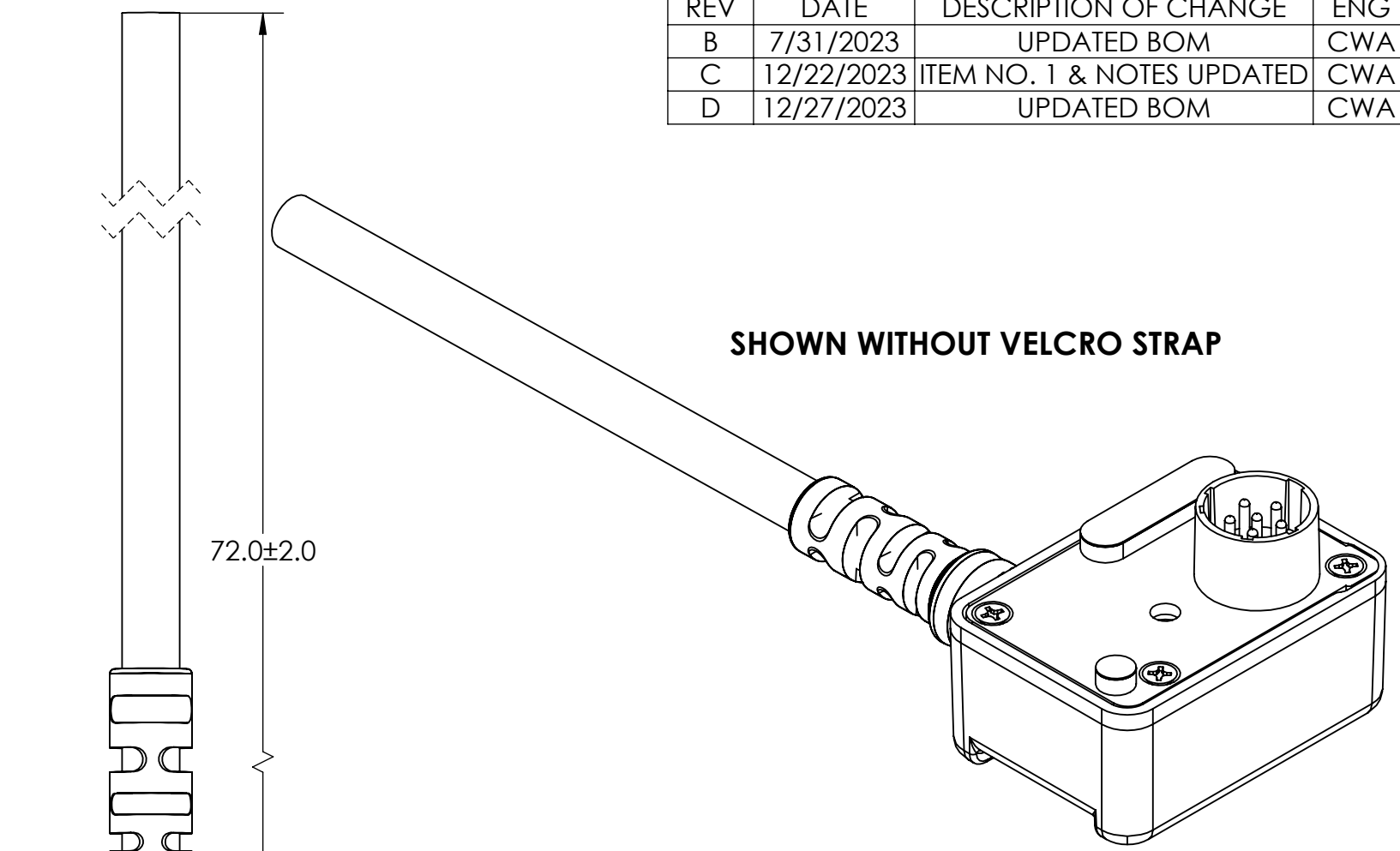


TABEL 1: WIRE RUN LIST				
PCB LOCATION	WIRE GAGE	WIRE COLOR	SIGNAL	CONN PIN
E1	AWG 16	BLACK	BATTERY_NEG	J1-1
E2	AWG 16	GREEN	BATTERY_NEG	J1-2
E3	AWG 16	N/C	N/C	
E4	AWG 16	RED	BATTERY_POS	J1-4
E5	AWG 16	WHITE	BATTERY_POS	J1-5

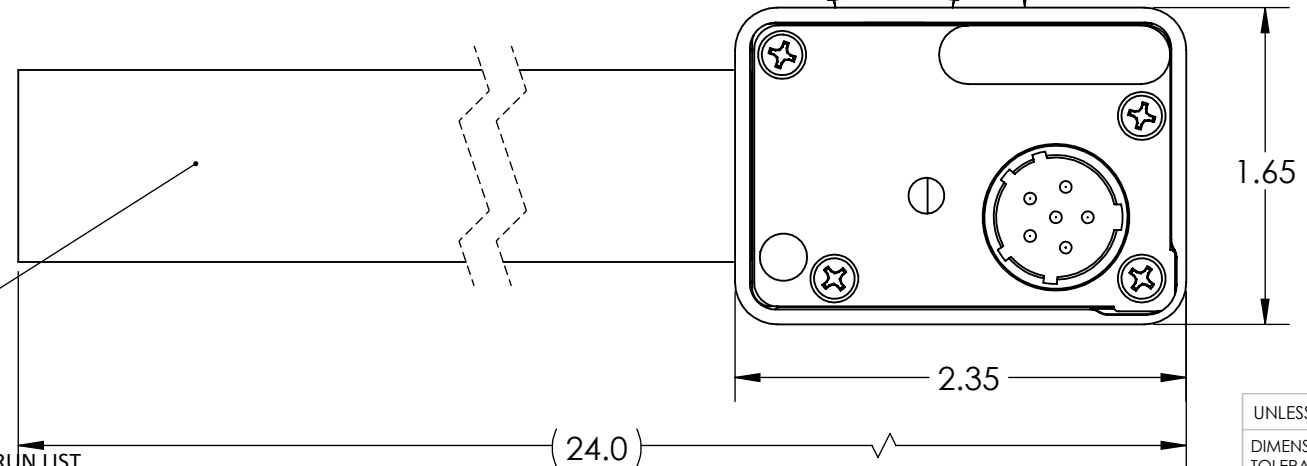
REVISIONS			
REV	DATE	DESCRIPTION OF CHANGE	ENG
B	7/31/2023	UPDATED BOM	CWA
C	12/22/2023	ITEM NO. 1 & NOTES UPDATED	CWA
D	12/27/2023	UPDATED BOM	CWA



LOOP (SOFT) SIDE OF VELCRO STRAP



SHOWN WITHOUT VELCRO STRAP



HOOK SIDE OF VELCRO STRAP

BILL OF MATERIALS			
ITEM NUMBER	PART NUMBER	QTY.	DESCRIPTION
1	SN-404-4C2-AWG16-12	0.5	4C CABLE W/OVERMOLDED THREADED STRAIN RELIEF
2	SN0017-1-N	1	CONNECTOR ASSY.
3	SN0008-1	1	PCB (CONFORMAL COATED)
4	SN0010-THREADED	1	ENCLOSURE (WITH THREADS)
5	90033A118	4	SCREW (#4, 3/4" LENGTH)
6	SN0013-1	1	VELCRO STRAP
7	99461A120	2	SCREW (4-40, 3/8" LENGTH)
8	SN0015-1	2	WASHER (0.125 ID, 0.312 OD)

NOTES:

- WIRING SHALL BE DONE IN ACCORDANCE WITH TABLE 1 WIRE RUN LIST.
- PACKAGING REQUIREMENTS:
 - EACH COMPLETED ASSEMBLY SHALL BE PACKAGED IN A ZIP POLYBAG.
 - CONNECTOR(S) SHALL BE PACKAGED TO PREVENT DAMAGE DURING SHIPPING. BUBBLE WRAP OR PROTECTIVE COVER MUST BE USED.
 - POLYBAG SHALL BE MARKED WITH SUPPLYNET LOGO, PRODUCT QR CODE, PART NUMBER, CAGE CODE, AND LOT NO, PER SN-STD-LBL REQUIREMENTS.
- WORKMANSHIP REQUIREMENTS:
 - MANUFACTURE TO IAW/WHMA A-620 CLASS 2 REQUIREMENTS.
 - SOLDERING SHALL BE COMPLIANT WITH IAW J-STD-001 AS APPLICABLE.
 - CONNECTOR(S) AND WIRE SHALL BE FREE FROM ANY SCRATCHES, CHIPS, AND DEFECTS.
- INSPECTION REQUIREMENTS:
 - EACH COMPLETED ASSEMBLY TO BE 100% TESTED FOR SHORTS, CONTINUITY, AND JACKET RESISTANCE (250V @100MOHM MIN.)
 - INSPECT TO IPC/WHMA A-620 CLASS 2 REQUIREMENTS.

UNLESS OTHERWISE SPECIFIED:
 DIMENSIONS ARE IN: INCHES
 TOLERANCES: .XX: ± 0.03
 .XXX: ± 0.005
 ANGULAR: .X°: 1°
 .XX°: 0.5°
 BREAK EDGES: .005 - .020
 FILLETS: .005 - .020
 SURFACE FINISH:
 GEOMETRIC TOLERANCING PER: ASME Y14.5-2009
 MATERIAL: SEE DRAWING NOTES
 FINISH: SEE DRAWING NOTES
 DO NOT SCALE DRAWING

	NAME	DATE
DRAWN	MM	11/3/21
CHECKED	MOB	11/3/21
COMMENTS:		

PROPRIETARY AND CONFIDENTIAL
 THE INFORMATION CONTAINED IN THIS DRAWING IS THE SOLE PROPERTY OF SUPPLYNET, INC. ANY REPRODUCTION IN PART OR AS A WHOLE WITHOUT THE WRITTEN PERMISSION OF SUPPLYNET INC. IS PROHIBITED.

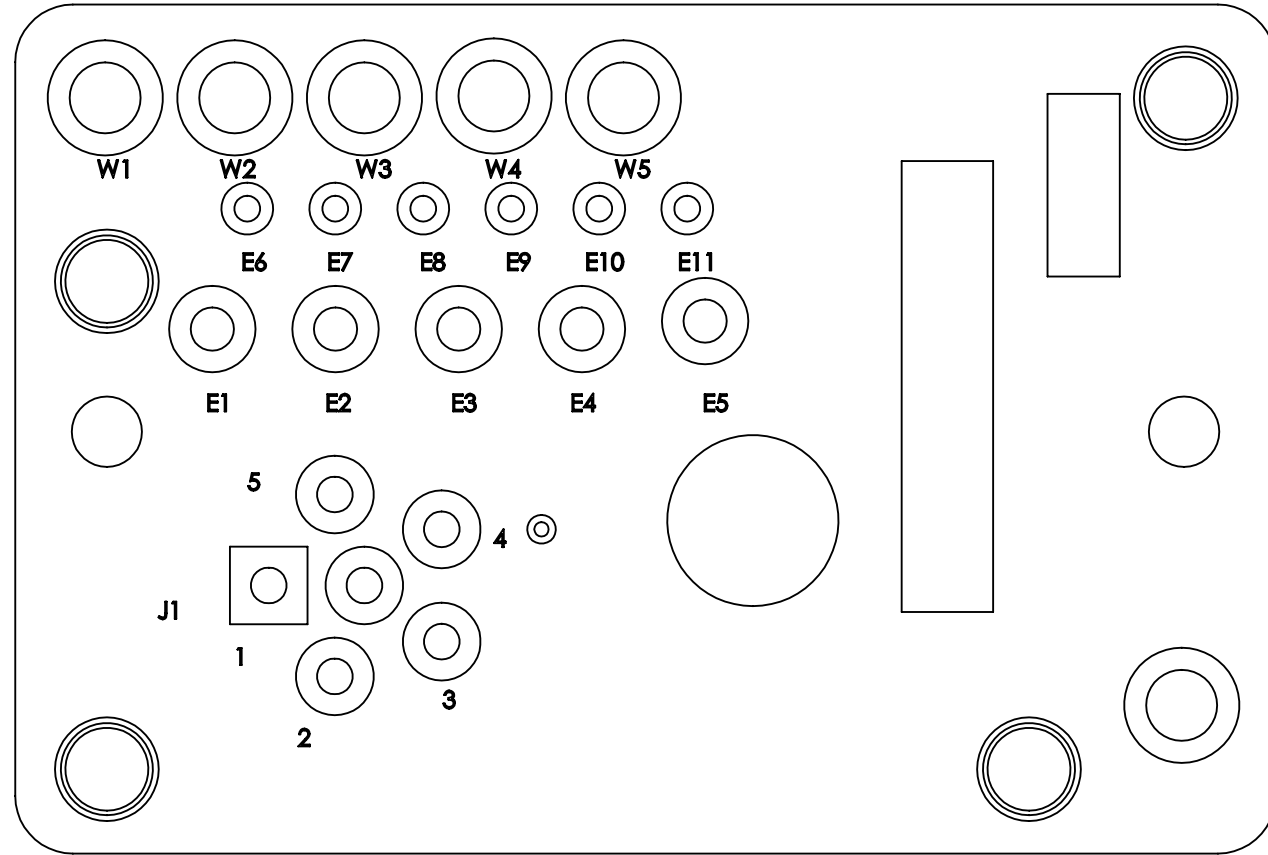
REF. NUMBER: SN0870

TITLE: **BB-2590 NO SMBUS POWER CABLE**

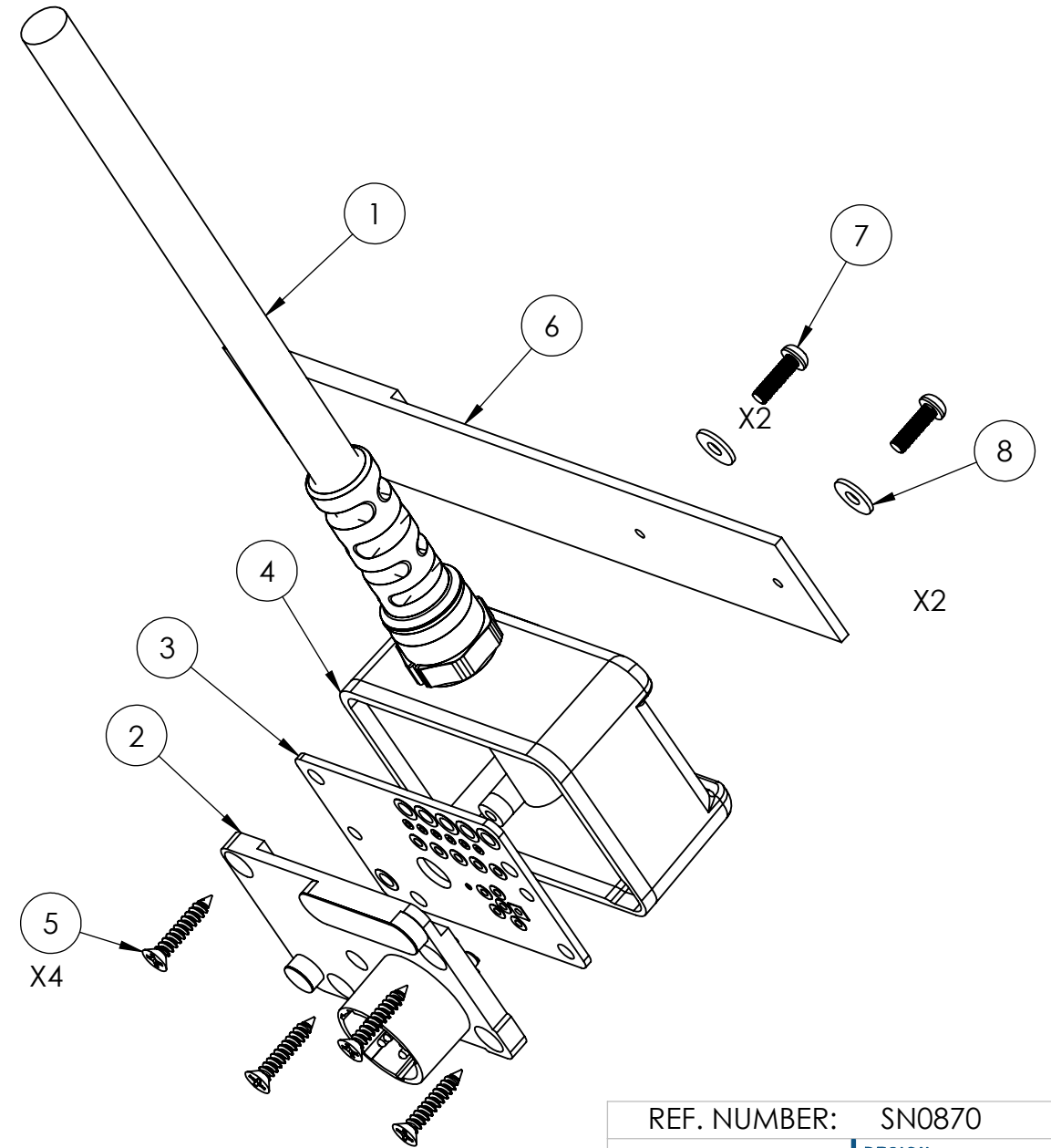
SIZE B	DWG. NO. CONN-BB2590-HD	REV D
SCALE: NA	WEIGHT:	SHEET 1 OF 2

CAGE CODE: 1HJX9

PCB DIAGRAM



EXPLODED VIEW



ASSEMBLY NOTES:

1. APPLY CYANOACRYLATE TO THREADS OF ITEM #1 (CABLE) TO SECURE TO ITEM #5 (ENCLOSURE).

PROPRIETARY AND CONFIDENTIAL
 THE INFORMATION CONTAINED IN THIS DRAWING IS THE SOLE PROPERTY OF SUPPLYNET, INC. ANY REPRODUCTION IN PART OR AS A WHOLE WITHOUT THE WRITTEN PERMISSION OF SUPPLYNET INC. IS PROHIBITED.

CAGE CODE: 1HJX9

REF. NUMBER: SN0870



TITLE: **BB-2590 SMBUS POWER/DATA CABLE (ALL PINS WIRED)**

SIZE	DWG. NO.	REV
B	CONN-BB2590SMBUS	D

SCALE: NA WEIGHT: SHEET 2 OF 2