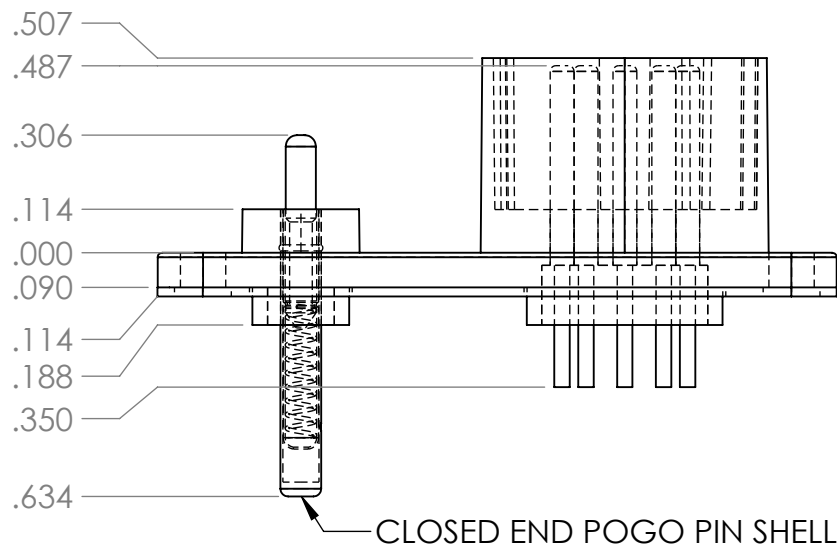
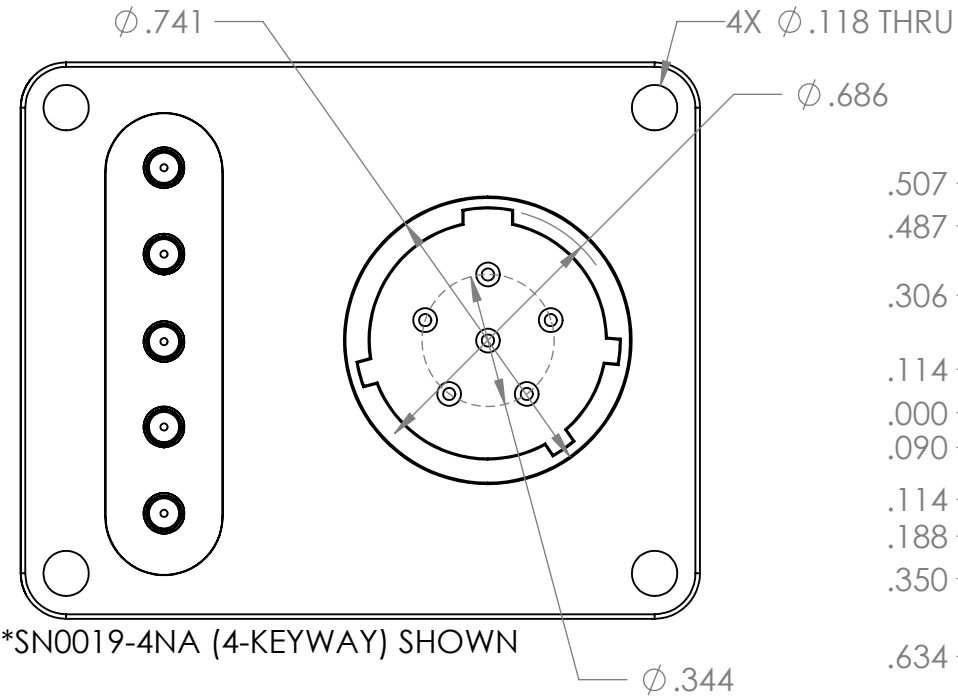
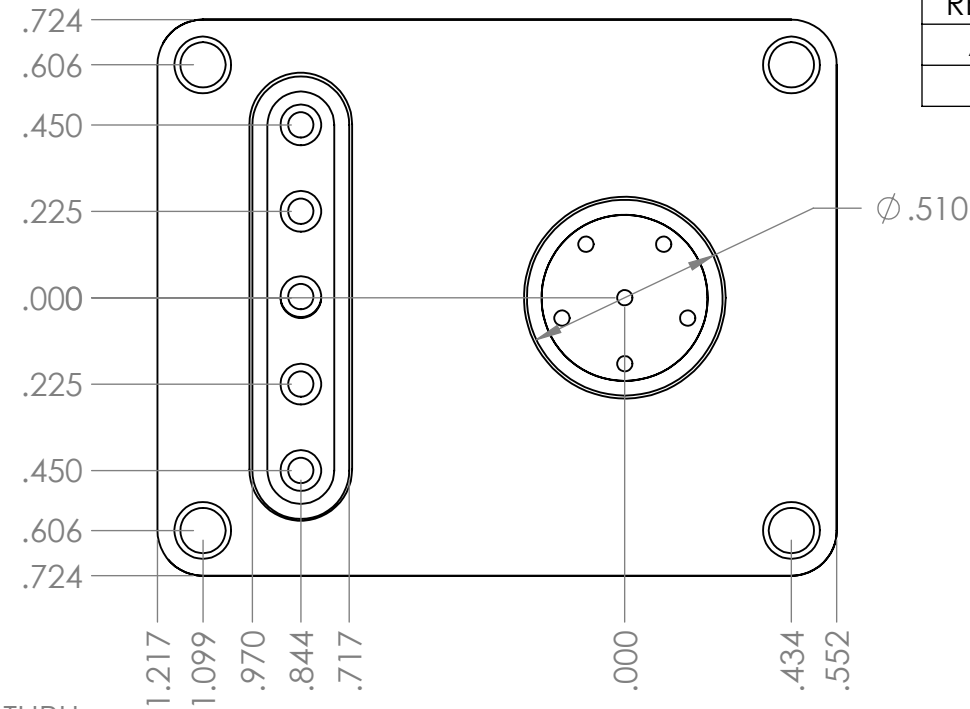
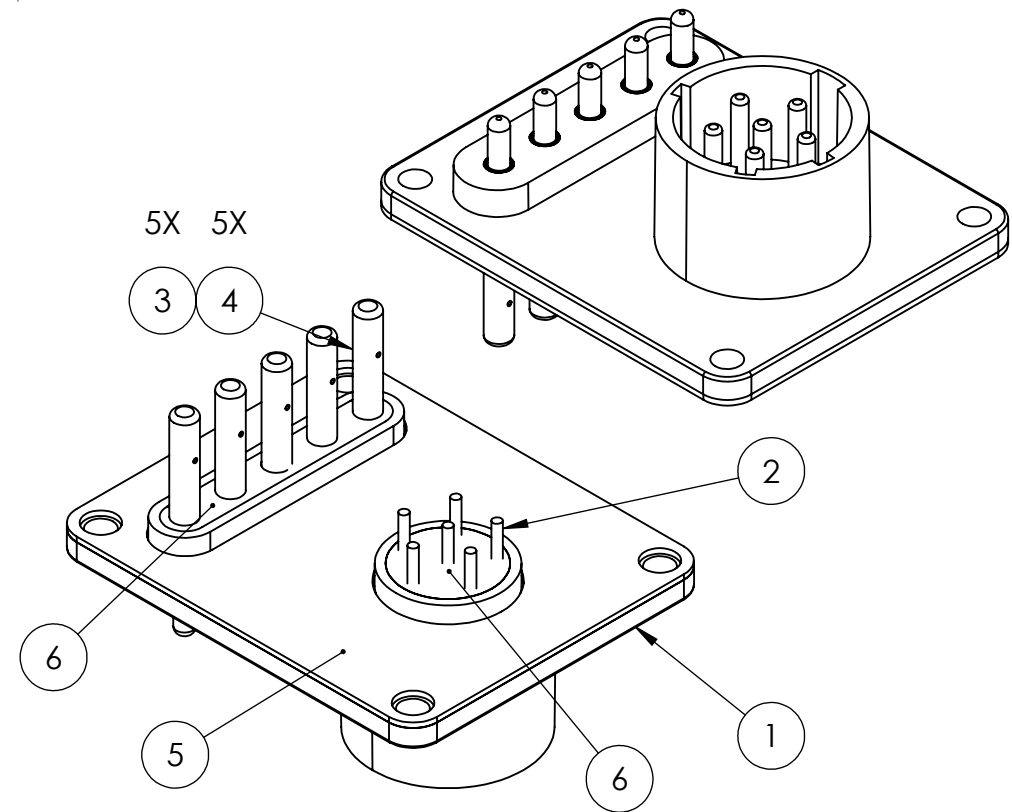


PART NUMBER DEVELOPMENT		
SNO019-PM	-4NA	-1
BASE PART NUMBER	4 = 4-KEYWAY 5 = 5-KEYWAY	0 = NO GASKET INCLUDED 1 = ADHESIVE GASKET INCLUDED



REVISIONS			
REV.	DESCRIPTION	DATE	ENG
A	INITIAL RELEASE	11/10/2025	MOB
B	UPDATED POGO PIN SHELL LENGTH	11/19/2025	MOB



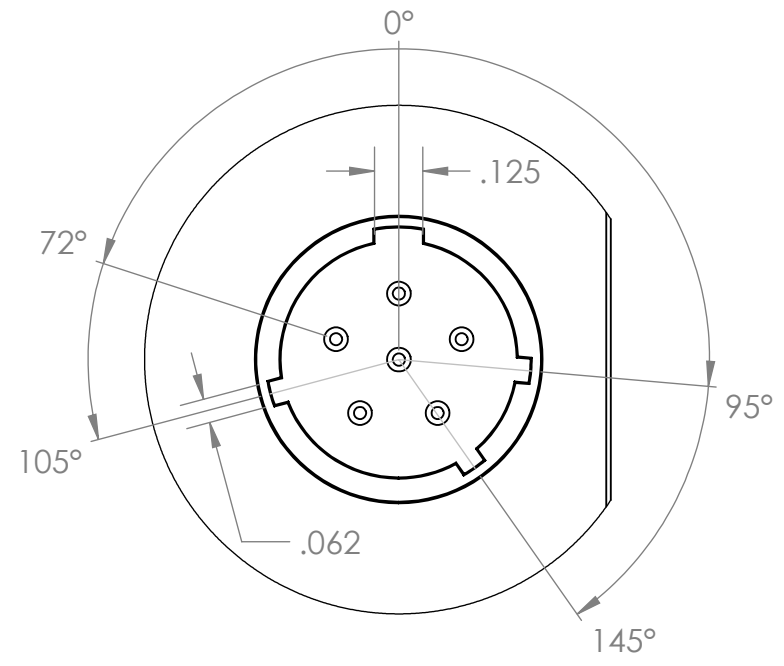
BILL OF MATERIALS			
ITEM NO.	PART NO.	QTY	NAME/DESCRIPTION
1	SN0006-X	1	CONNECTOR BODY, CUSTOM BATTERY CONNECTOR, PANEL MOUNT, PBT 30% GF
2	SN0016-1	6	POWER PINS, STANDARD, PCB TAILS
3	SN0009-1	5	POGO PINS, STANDARD
4	SN0007-2	6	POGO PIN SHELL, CLOSED END
5	SN0017-C1-GSKT	AR	GASKET, REAR FACE, 3M 4936 VHB
6	DP-270	AR	EPOXY POTTING COMPOUND, BLACK

NOTES:

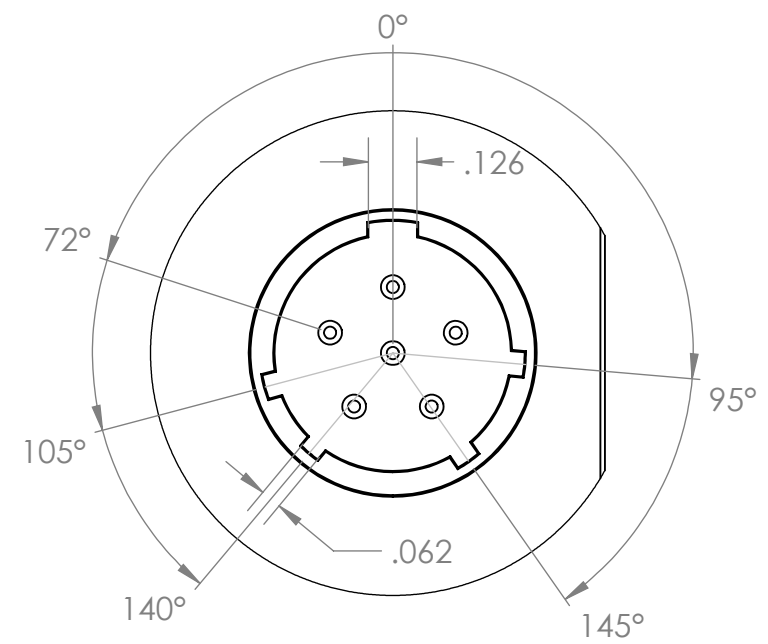
- MATERIAL & FINISH:
 - CONNECTOR BODY: PBT 30% GLASS FILLED, BLACK
 - POWER PINS: GOLD PLATED BRASS PER UNS C36000, GOLD PER MIL-G-45204 TYPE II, GRADE C, CLASS 00, OVER NICKEL PER QQ-N-290, CLASS 1.
 - POGO PINS: GOLD PLATED BRASS PER UNS C36000, GOLD PER MIL-G-45204 TYPE II, GRADE C, CLASS 2, OVER NICKEL PER QQN-290, CLASS 1.
 - GASKET: 3M 4936 VHB, .6MM THICK.
- POWER PINS AND POGO PINS SHALL BE PRESS FIT INTO CONNECTOR BODY, THEN BACKPOTTED TO CREATE A WATER-TIGHT SEAL.
- FINISHED ASSEMBLY SHALL BE FREE FROM FLASHING, BURRS, AND DEFECTS.
- PACKAGING:
 - EACH COMPLETED ASSEMBLY SHALL BE PACKAGED TO AVOID DAMAGE DURING SHIPPING.
 - PACKAGING SHALL BE MARKED PER SN-STD-LBL REQUIREMENTS.
 - GASKET INCLUDED BUT NOT INSTALLED.

UNLESS OTHERWISE SPECIFIED:		NAME	DATE	REF. NUMBER: SN1365
DIMENSIONS ARE IN: INCHES TOLERANCES: .XX: ± 0.03 .XXX: ± 0.005 ANGULAR: .X°: 1° .XX°: 0.5° BREAK EDGES: .005 - .020 FILLETS: .005 - .020 SURFACE FINISH:		DRAWN	MOB 11/10/2025	
GEOMETRIC TOLERANCING PER: ASME Y14.5 -2009		CHECKED	MOB 11/10/2025	BB-XX90 PANEL MOUNT CONNECTOR, ALL POWER PINS, 5 DATA PINS
MATERIAL: SEE DRAWING NOTES		COMMENTS:		
FINISH: SEE DRAWING NOTES		PROPRIETARY AND CONFIDENTIAL THE INFORMATION CONTAINED IN THIS DRAWING IS THE SOLE PROPERTY OF SUPPLYNET, INC. ANY REPRODUCTION IN PART OR AS A WHOLE WITHOUT THE WRITTEN PERMISSION OF SUPPLYNET INC. IS PROHIBITED.		DWG. NO.
DO NOT SCALE DRAWING		CAGE CODE: 1HJX9		REV
		SCALE: NA WEIGHT:		B
		SHEET 1 OF 2		B

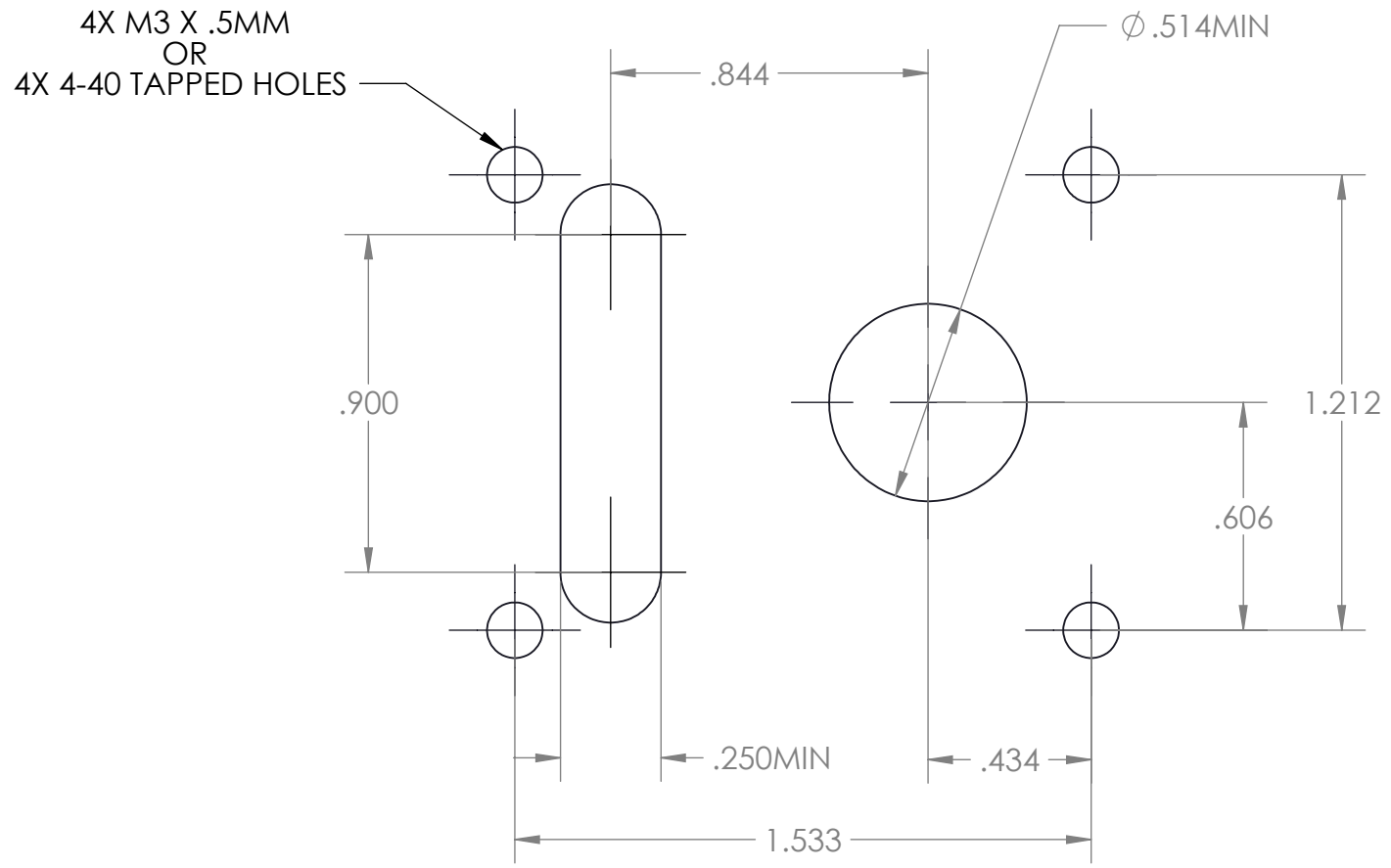
SN0019-PM-4NA-0



SN0019-PM-5NA-0



RECOMMENDED PANEL CUTOUT



PROPRIETARY AND CONFIDENTIAL
 THE INFORMATION CONTAINED IN THIS DRAWING IS THE SOLE PROPERTY OF SUPPLYNET, INC. ANY REPRODUCTION IN PART OR AS A WHOLE WITHOUT THE WRITTEN PERMISSION OF SUPPLYNET INC. IS PROHIBITED.

DO NOT SCALE DRAWING

CAGE CODE: 1HJX9

REF. NUMBER: SN1365		
SupplyNet		DESIGN ENGINEERING MANUFACTURING
TITLE: BB-XX90 PANEL MOUNT CONNECTOR, ALL POWER PINS, 5 DATA PINS		
SIZE B	DWG. NO. SN0019-XNA-X	REV B
SCALE: NA	WEIGHT:	SHEET 2 OF 2