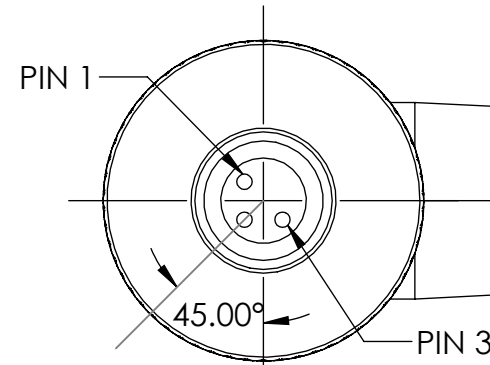


TABLE 1: WIRING	
P1	WIRE COLORS
1	BLACK, SHIELD*
2	N/C
3	WHITE

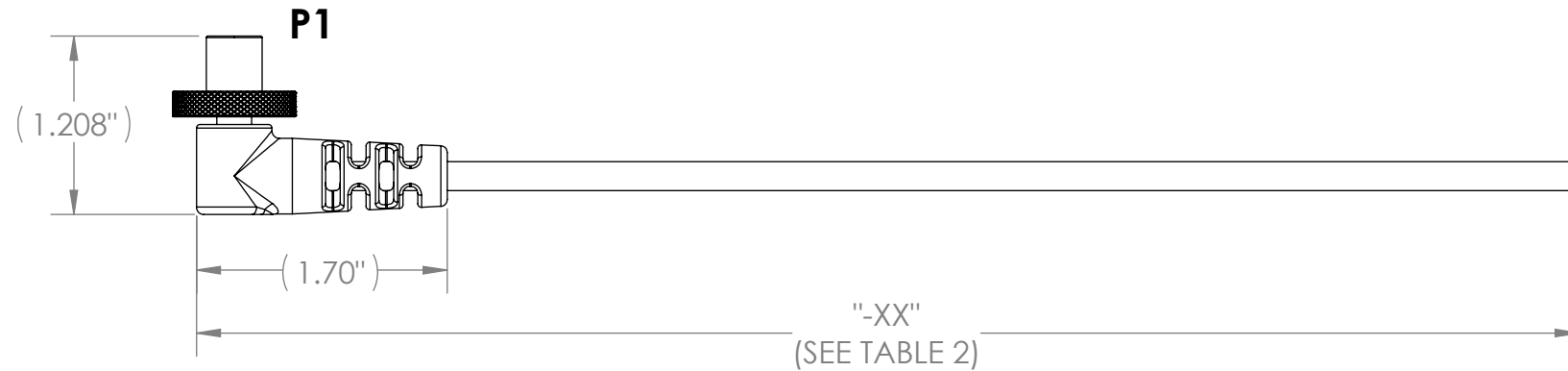
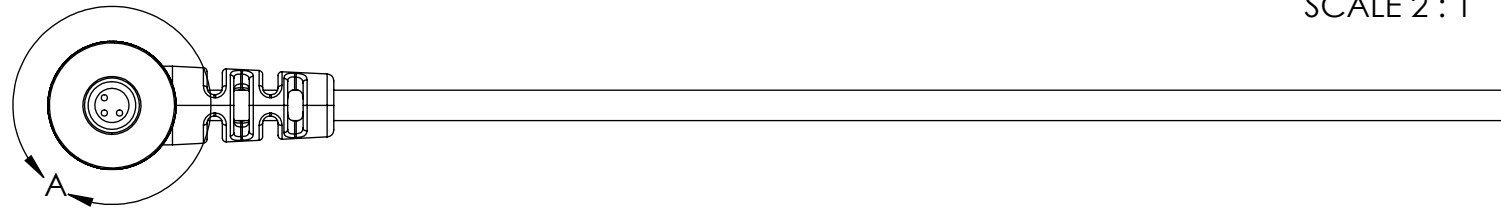
*PIN 1 ATTACHED TO BLACK WIRE AND CABLE SHIELD

TABLE 2: CABLE LENGTH		
PART NUMBER	"-XX" DIMENSION (INCHES)	TOLERANCE (INCHES)
SN-07006B0034-01	12	+1.0", -0.0"
SN-07006B0034-02	24	+2.0", -0.0"
SN-07006B0034-03	36	+2.0", -0.0"
SN-07006B0034-04	48	+2.0", -0.0"
SN-07006B0034-05	60	+2.0", -0.0"
SN-07006B0034-06	72	+4.0", -0.0"
SN-07006B0034-07	84	+4.0", -0.0"
SN-07006B0034-08	96	+4.0", -0.0"
SN-07006B0034-09	108	+4.0", -0.0"
SN-07006B0034-10	120	+4.0", -0.0"
SN-07006B0034-11	132	+6.0", -0.0"
SN-07006B0034-12	144	+6.0", -0.0"
SN-07006B0034-14	168	+6.0", -0.0"
SN-07006B0034-22	264	+6.0", -0.0"

REVISIONS			
REV	DESCRIPTION	DATE	ENG
C	UPDATED WIRE RUN LIST & P1 PINOUT	08/13/2024	CWA
D	UPDATED P1 STRAIN RELIEF MODEL	10/29/2024	CWA
E	ADDED 22 FOOT LENGTH	06/04/2026	GMW



DETAIL A
PIN LAYOUT P1
SCALE 2 : 1



NOTES:

1. WIRING SHALL BE DONE IN ACCORDANCE WITH TABLE 1 WIRE RUN LIST.
2. PACKAGING REQUIREMENTS:
 - A. EACH COMPLETED ASSEMBLY SHALL BE PACKAGED IN A ZIP POLYBAG.
 - B. CONNECTOR(S) SHALL BE PACKAGED TO PREVENT DAMAGE DURING SHIPPING. BUBBLE WRAP OR PROTECTIVE COVER MUST BE USED.
 - C. POLYBAG SHALL BE MARKED WITH SUPPLYNET LOGO, PRODUCT QR CODE, PART NUMBER, CAGE CODE, AND LOT NO, PER SN-STD-LBL REQUIREMENTS.
3. WORKMANSHIP REQUIREMENTS:
 - A. MANUFACTURE TO IAW/WHMA A-620 CLASS 2 REQUIREMENTS.
 - B. SOLDERING SHALL BE COMPLIANT WITH IAW J-STD-001 AS APPLICABLE.
 - C. CONNECTOR(S) AND WIRE SHALL BE FREE FROM ANY SCRATCHES, CHIPS, AND DEFECTS.
4. INSPECTION REQUIREMENTS:
 - A. EACH COMPLETED ASSEMBLY TO BE 100% TESTED FOR SHORTS, CONTINUITY, AND JACKET RESISTANCE (250V @100MOHM MIN.)
 - B. INSPECT TO IPC/WHMA A-620 CLASS 2 REQUIREMENTS.

BILL OF MATERIALS				
ITEM NO.	PART NO	QTY	NAME/DESCRIPTION	SUPPLIER CODE
1	07006B0035	1	CONNECTOR, DAGR POWER	SCS
2	07006B0036	1	SPINNER, DAGR POWER	SCS
3	M3432-02LHE(2/20)SJ0250	-XX	CABLE, SHIELDED TWISTED PAIR	SCS

REF. NUMBER: SN0642

UNLESS OTHERWISE SPECIFIED:

DIMENSIONS ARE IN: INCHES
 TOLERANCES: .XX: ± 0.03
 .XXX: ± 0.005
 ANGULAR: .X°: 1°
 .XX°: 0.5°
 BREAK EDGES: .005 - .020
 FILLETS: .005 - .020
 SURFACE FINISH:

GEOMETRIC TOLERANCING PER: ASME Y14.5 -2009

MATERIAL: SEE DRAWING NOTES
 FINISH: SEE DRAWING NOTES

DO NOT SCALE DRAWING

	NAME	DATE
DRAWN	LS	5/6/2019
CHECKED	RB	5/6/2019

COMMENTS:

PROPRIETARY AND CONFIDENTIAL

THE INFORMATION CONTAINED IN THIS DRAWING IS THE SOLE PROPERTY OF SUPPLYNET, INC. ANY REPRODUCTION IN PART OR AS A WHOLE WITHOUT THE WRITTEN PERMISSION OF SUPPLYNET INC. IS PROHIBITED.

CAGE CODE: 1HJX9



TITLE:
CABLE ASSEMBLY, PIGTAIL, DAGR POWER, VARIABLE LENGTH

SIZE	DWG. NO.	REV
B	SN-07006B0034-XX	E

SCALE: NA WEIGHT: SHEET 1 OF 1